

Georgia 2008 Mental Health National Outcome Measures (NOMS): CMHS Uniform Reporting System



Utilization Rates/Number of Consumers Served	U.S.	State	U.S. Rate	States
Penetration Rate per 1,000 population	6,332,983	14.08	20.69	58
Community Utilization per 1,000 population	5,639,738	13.49	19.15	56
State Hospital Utilization per 1,000 population	173,307	1.17	0.59	51
Other Psychiatric Inpatient Utilization per 1,000	383,904	0.02	1.51	40

Adult Employment Status	U.S.	State	U.S. Rate	States
Employment Status (percent in Labor Force)	679,084	35%	39%	56
Employment Status (percent with Employment Data)	679,084	16%	21%	56

Adult Consumer Survey measures	State	U.S. Rate	States
Positive About Outcomes	75%	72%	54

Child/Family Consumer Survey measures	State	U.S. Rate	States
Positive About Outcomes	44%	64%	54

Readmission Rates: (Civil "non-Forensic" clients)	U.S.	State	U.S. Rate	States
State Hospital Readmissions: 30 Days	13,771	11.9%	9.3%	48
State Hospital Readmissions: 180 Days	31,720	26.1%	21.3%	49
State Hospital Readmissions: 30 Days: Adults	12,519	12.1%	9.4%	47
State Hospital Readmissions: 180 Days: Adults	29,096	27.1%	21.8%	47
State Hospital Readmissions: 30 Days: Children	1,228	10.1%	8.2%	38
State Hospital Readmissions: 180 Days: Children	2,568	17.6%	17.1%	43

Living Situation	U.S.	State	U.S. Rate	States
Private Residence	3,666,906	83.1%	80.8%	52
Homeless/Shelter	133,656	4.7%	2.9%	50
Jail/Correctional Facility	90,587	0.9%	2.0%	49

Adult EBP Services	U.S.	State	U.S. Rate	States
Supported Housing	65,797	3.1%	3%	34
Supported Employment	40,387	3.4%	2%	41
Assertive Community Treatment	58,502	1.6%	2%	40
Family PsychoEducation	25,127	-	2%	19
Dual Diagnosis Treatment	46,706	-	4%	25
Illness Self Management	147,089	7.79%	9%	22
Medications Management	253,414	-	23%	17

Child/Adolescent EBP Services	U.S.	State	U.S. Rate	States
Therapeutic Foster Care	16,291	-	2%	28
Multi Systemic Therapy	8,126	-	1%	21
Functional Family Therapy	7,027	16.5%	2%	14

Change in Social Connectedness	State	U.S. Rate	States
Adult Improved Social Connectedness	78%	73%	51
Child/Family Improved Social Connectedness	73%	86%	49



2008 STATE MENTAL HEALTH MEASURES: CMHS Uniform Reporting System Measures



STATE: Georgia

Basic Measures	State Number	Rate	U.S. FY 2008	Rate	States
Indicator 1: Penetration Rate per 1,000 population	134,435	14.08	6,332,983	20.69	58
Indicator 2: Community Utilization per 1,000 population	128,785	13.49	5,639,738	19.15	56
Indicator 3: State Hospital Utilization per 1,000 population	11,177	1.17	173,307	0.59	51
Indicator 4: Medicaid Funding Status	40,184	36%	3,274,788	59%	47
Indicator 5: Employment Status (percent employed)	15,856	16%	679,084	21%	56
Indicator 6: State Hospital Adult Admissions	12,165	1.23	151,981	0.96	51
Indicator 7: Community Adult Admissions	305,349	3.12	3,696,054	0.99	47
Indicator 8: State Hospital LOS Discharged Adult Patients	-	7 days	-	46 days	50
Indicator 9: State Hospital LOS Resident Adult Patients	-	44 days	-	77 days	50
Indicator 10: Percent of Client who meet SMI definition	-	59%	-	69%	55
Indicator 11: Adults with Co-occurring MH/SA Disorders	-	6%	-	22%	46
Indicator 12: Children with Co-occurring MH/SA Disorders	-	2%	-	6%	45

Basic Measure: Adult Consumer Survey measures	State Rate	U.S. Rate	States
Indicator 13: Positive About Access	81%	85%	54
Indicator 14: Positive About Quality and Appropriateness	88%	87%	54
Indicator 15: Positive About Outcomes	75%	72%	54
Indicator 16: Positive on Participation in Treatment Planning	71%	83%	54
Indicator 17: Positive General Satisfaction with Services	86%	88%	54

Basic Measure: Child/Family Consumer Survey measures	State Rate	U.S. Rate	States
Indicator 18: Positive About Access	67%	84%	53
Indicator 19: Positive about General Satisfaction	62%	83%	54
Indicator 20: Positive About Outcomes	44%	64%	54
Indicator 21: Positive on Participation in Treatment Planning	68%	87%	54
Indicator 22: Positive Cultural Sensitivity of Providers	85%	93%	53

Basic Measure: Consumer Living Situations	State Number	Rate	U.S. FY 2008	Rate	States
Indicator 23: Private Residence	107,085	83%	3,666,906	81%	52
Indicator 24: Jail/Correctional Facility	1,212	1%	90,587	2%	49
Indicator 25: Homeless or Shelter	6,012	5%	133,656	3%	50

Basic Measure: Hospital Readmissions	State Number	Rate	U.S. FY 2008	Rate	States
Indicator 26: State Hospital Readmissions: 30 Days	1,647	11.9%	13,771	9%	48
Indicator 27: State Hospital Readmissions: 180 Days	3,605	26.1%	31,720	21%	49
Indicator 28: Readmission to any psychiatric hospital: 30 Days	-	-	48,044	15%	29

Basic Measure: State Mental Health Finance (FY2006)	State Number	Rate	U.S. FY 2008	Rate	States
Indicator 29: SMHA Expenditures for Community MH	\$291,529,673	52%	\$21,846,279,405	70%	51
Indicator 30: SMHA Revenues from State Sources	\$471,090,387	83%	\$13,670,730,381	45%	51
Indicator 31: Total SMHA Expenditures	\$565,024,331	-	\$31,116,017,304	-	51

Developmental Measure	State Number	Rate	US FY 2008	Rate	States
Dev 1: Percent Adults with SMI and Children with SED	81,614	61%	4,204,240	66%	57

Developmental Measure: Adult Evidence Based Practices	State Number	Rate	U.S. FY 2008	Rate	States
Dev 2: Assertive Community Treatment	893	1.6%	58,502	2.3%	54
Dev 3: Supported Housing	1,750	3.1%	65,797	3.3%	34
Dev 4: Supported Employment	1,936	3.4%	40,387	1.8%	41
Dev 5: Family Psychoeducation	-	-	25,127	1.8%	19
Dev 6: Integrated Dual Diagnosis Treatment (MH/SA)	-	-	46,706	3.8%	25
Dev 7: Illness Self-Management and Recovery	4,467	7.8%	147,089	9.1%	22
Dev 8: Medications Management	-	-	253,463	22.5%	17

Developmental Measure: Child Evidence Based Practices	State Number	Rate	U.S. FY 2008	Rate	States
Dev 9: Therapeutic Foster Care	-	-	16,291	2.1%	28
Dev 10: Multisystemic Therapy	-	-	8,126	1.2%	21
Dev 11: Functional Family Therapy	3,293	16.5%	7,027	1.6%	14

Developmental Measure: Use of New Generation Medications	State Number	Rate	U.S. FY 2008	Rate	States
Dev 12: New Generation Meds: State Hospitals	3,587	85.6%	22,864	73.7%	19
Dev 13: New Generation Meds: Community MH	-	-	104,424	48.0%	17
Dev 14: New Generation Meds: Total System	-	-	92,769	49.7%	14

Developmental Measure: Outcome	State Number	Rate	U.S. FY 2008	Rate	States
Dev 15: Adult Criminal Justice Contacts	-	-	53,445	8.9%	42
Dev 16: Juvenile Justice Contacts	-	-	5,906	6.1%	39
Dev 17: School Attendance (Improved)	64	29.8%	10,261	36.1%	34



Mental Health Community Services Block Grant: 2008 State Summary Report



Georgia

State URS Contact Person

Rick Dunn

Two Peachtree Street NW, Suite 23-492; Atlanta, GA 30303

Phone: 404-657-1645

Email: redunn@dh.state.ga.us

FY 2006 Mental Health Block Grant Expenditures

\$12,919,994

FY 2006 SMHA Community MH Expenditures

\$291,529,673

FY 2006 Per Capita Community MH Expenditures

\$31.43

FY 2006 Community Percent of Total SMHA Spending

52%

FY 2006 Total SMHA Mental Health Expenditures

\$565,024,331

FY 2006 Per Capita Total SMHA Mental Health Expenditures

\$60.92

Statewide Mental Health Agency Data*

134,435 Total Clients Served by SMHA System

14.08

Total Utilization rate per 1,000 population

128,785 Clients Served in Community Settings

13.49

Community Utilization rate per 1,000 population

11,177 Clients Served in State Hospitals

1.17

Hospital Utilization rate per 1,000 population

Gender

53% Female

47% Male

Age

10.4% Age 0 to 12

13.0% Age 13-17

4.2% Age 18 to 20

69.7% Age 21 to 64

2.1% Age 65 to 74

0.6% Age 75 and over

- Age Not Available

Race/Ethnicity:

0.2% American Indian/Alaskan Native

0.5% Asian

41.8% Black or African American

0.1% Native Hawaiian/Pacific Islander

52.7% White

1.4% Multi-Racial

3.0% Hispanic or Latino

3.3% Race not available

Living Situation (with known status)

83.1% Private Residence

2.2% Foster Home

2.4% Residential Care

- Crisis Residence

1.9% Children's Residential Treatment

0.2% Institutional Setting

0.9% Jail/Correctional Facility

4.7% Homeless or Shelter

4.6% Other Living Situation

- Living Situation Not Available

Employment Adult With Known Status:

16% Percent Employed

54% Percent Not In Labor Force

30% Percent Unemployed

Medicaid Funding Status of Consumers

30% Medicaid Only

64% SMHA Funds Only (Non-Medicaid)

6.4% Both Medicaid and Other Funds

Consumer Perception of Care: (Children/Adolescents)

67% Access to Services

62% Quality/Appropriateness of Services

44% Outcomes from Services

68% Participation in Treatment Planning

85% Cultural Sensitivity of Providers

Consumer Perception of Care: (Adults):

81% Access to Services

88% Quality/Appropriateness of Services

75% Outcomes from Services

71% Participation in Treatment Planning

86% Overall Satisfaction with Care

Outcome Measures Developmental

- Adults Arrested this Year

- Youth Arrested this year

Implementation of Evidence-Based Practices

1.6% Assertive Community Treatment

3.1% Supported Housing

3.4% Supported Employment

- Family Psychoeducation

- Integrated Dual Diagnosis Treatment (MH/SA)

7.8% Illness Self-Management and Recovery

- Medications Management

- Therapeutic Foster Care

- MultiSystemic Therapy

16.5% Family Functional Therapy

29.8% Improved School Attendance

State Hospital Readmissions (Civil Status Patients)

11.9% State Hospital Readmissions: 30 Days

26.1% State Hospital Readmissions: 180 Days

- Readmission to any psychiatric hospital: 30 Days

* Based on 2008 URS data provided by US States and Territories per annual reporting guidelines.



The Community Mental Health Block Grant is administered by the Center for Mental Health Services within the Substance Abuse and Mental Health Services Administration of the US Department of Health and Human Services

ACCESS DOMAIN: TABLE 1: Demographic Characteristics of Persons Served by the State Mental Health Agency, FY 2008

STATE: Georgia

	Total Served:	Total Served:	Total Served:	Total Served:	Penetration Rates (rate per 1,000 population):	Penetration Rate (rate per 1,000 population):	Penetration Rates (rate per 1,000 population):	States
Age	State N	State %	U.S. N	U.S. N	State	South	U.S.	Reporting
0 to 12	13,950	10.4%	897,914	14.2%	7.6	17.5	16.9	57
13 to 17	17,527	13.0%	813,273	12.8%	25.1	38.7	37.6	57
18 to 20	5,584	4.2%	300,746	4.7%	14.6	24.2	23.5	57
21 to 64	93,746	69.7%	4,020,003	63.5%	16.5	21.3	22.4	58
65 to 74	2,768	2.1%	175,757	2.8%	5.3	7.4	8.9	58
75 and over	860	0.6%	114,633	1.8%	2.1	4.0	6.1	56
Not Available	-	-	10,658	0.2%	-	-	-	31
TOTAL	134,435	100%	6,332,983	100%	14.1	19.9	20.7	58

	Total Served:	Total Served:	Total Served:	Total Served:	Penetration Rates (rate per 1,000 population):	Penetration Rate (rate per 1,000 population):	Penetration Rates (rate per 1,000 population):	States
Gender	State N	State %	U.S. N	U.S. N	State	South	U.S.	Reporting
Female	71,064	52.9%	3,246,076	51.3%	14.6	20.5	20.9	58
Male	63,371	47.1%	3,039,387	48.0%	13.5	19.3	20.2	58
Not Available	-	-	47,520	0.8%	-	-	-	36
TOTAL	134,435	100%	6,332,983	100%	14.1	19.9	20.7	58

	Total Served:	Total Served:	Total Served:	Total Served:	Penetration Rates (rate per 1,000 population):	Penetration Rate (rate per 1,000 population):	Penetration Rates (rate per 1,000 population):	States
Race/Ethnicity	State N	State %	U.S. N	U.S. N	State	South	U.S.	Reporting
American Indian/Alaskan Native	297	0.2%	74,947	1.2%	9.0	21.9	25.5	53
Asian	708	0.5%	86,497	1.4%	2.6	4.0	6.5	54
Black/African American	56,164	41.8%	1,252,828	19.8%	19.6	27.0	32.3	54
Native Hawaiian/Pacific Islander	83	0.1%	12,925	0.2%	10.8	21.7	26.2	49
White	70,807	52.7%	4,011,883	63.3%	11.3	17.1	16.6	56
Hispanic	*	*	103,190	1.6%	*	8.9	36.8	10
Multi-Racial	1,875	1.4%	122,205	1.9%	16.7	28.9	28.0	45
Not Available	4,501	3.3%	668,508	10.6%	-	-	-	35
TOTAL	134,435	100.0%	6,332,983	100%	14.1	19.9	20.7	58

	Total Served:	Total Served:	Total Served:	Total Served:	Penetration Rates (rate per 1,000 population):	Penetration Rate (rate per 1,000 population):	Penetration Rates (rate per 1,000 population):	States
Hispanic Origin	State N	State %	U.S. N	U.S. N	State	South	U.S.	Reporting
Hispanic or Latino	4,098	3.0%	731,285	12.2%	5.5	10.5	16.3	49
Not Hispanic or Latino	126,541	94.1%	4,679,009	77.8%	14.4	19.0	19.1	49
Hispanic Status Unknown	3,796	2.8%	601,698	10.0%	-	-	-	51
TOTAL	134,435	100.0%	6,011,992	100%	14.1	19.0	20.4	52

Are Client Counts Unduplicated? Unduplicated

Number States with Unduplicated Counts

39

Note:

This table uses data from URS/DIG Table 2a, Table 2b and from the US Census Bureau.

All denominators use US Census data from 2006.

US totals are calculated uniquely for each data element based on only those states who reported numerator (clients served) data.

Regional groupings of States based on SAMHSA's Block Grant Regions.

* Reported under Hispanic Origin

State Notes:

2A: Age See General Notes

Gender None

Race: See General Notes

Overall: See General Notes

2B: Age See General Notes

Gender None

Race: See General Notes

Overall: See General Notes

ACCESS DOMAIN: TABLE 2: Persons Served in Community Mental Health Programs by Age and Gender, FY 2008

STATE: Georgia

Age	Served in Community: State N	Served in Community: State %	Served in Community: U.S. N	Served in Community: U.S. %	Penetration Rate per 1,000 population: State	Penetration Rate per 1,000 population: U.S.	States Reporting
0 to 17	30,778	24%	1,534,212	27%	12.2	21.3	55
18 to 20	5,324	4%	264,308	5%	13.9	21.4	55
21 to 64	89,170	69%	3,577,913	63%	15.7	20.7	56
65 and Over	3,513	3%	254,013	5%	3.7	6.9	55
Not Available	-	-	9,291	0%	-	-	25
TOTAL	128,785	100%	5,639,738	100%	13.5	19.2	56

Gender	Served in Community: State N	Served in Community: State %	Served in Community: U.S. N	Served in Community: U.S. %	Penetration Rate per 1,000 population: State	Penetration Rate per 1,000 population: U.S.	States Reporting
Female	69,082	54%	2,919,893	52%	14.2	19.6	56
Male	59,703	46%	2,698,694	48%	12.7	18.6	56
Not Available	-	-	21,151	0%	-	-	33
TOTAL	128,785	100%	5,639,738	100%	13.5	19.2	56

Note:

US totals are based on states reporting.

This table uses data from URS/DIG Table 3.

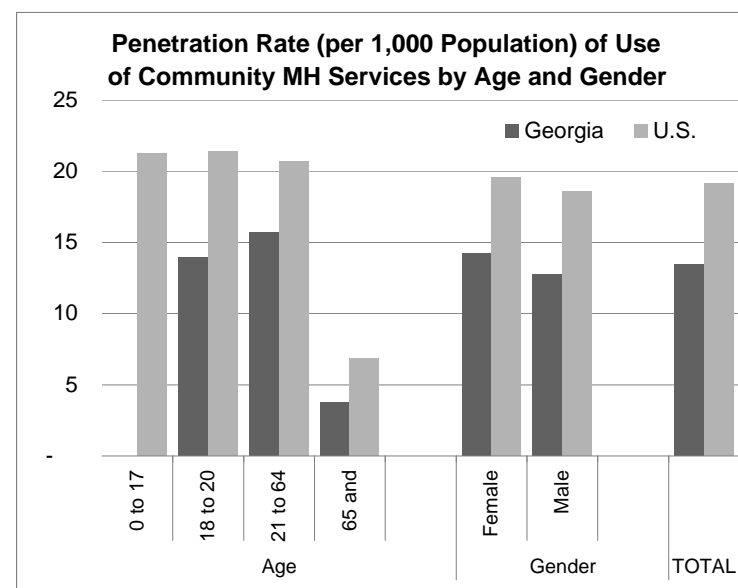
US totals are calculated uniquely for each data element based on only those states who reported numerator (clients served) data.

State Notes:

Gender: None

Age: See General Notes

Overall: See General Notes



ACCESS DOMAIN: TABLE 3: Persons Served in State Psychiatric Hospitals by Age and Gender, FY 2008

STATE: Georgia

	Served in State Psychiatric Hospitals: State N	Served in State Psychiatric Hospitals: State %	Served in State Psychiatric Hospitals: U.S. N	Served in State Psychiatric Hospitals: U.S. %	Penetration rate per 1,000 population: State	Penetration rate per 1,000 population: U.S.	States Reporting
Age							
0 to 17	1,264	11.3%	14,971	8.6%	0.50	0.23	38
18 to 20	567	5.1%	8,670	5.0%	1.48	0.70	51
21 to 64	9,157	81.9%	142,270	82.1%	1.61	0.82	51
65 and Over	189	1.7%	7,341	4.2%	0.20	0.20	50
Not Available	-	-	55	0.0%	-	-	9
TOTAL	11,177	100%	173,307	100%	1.17	0.59	51

	Served in State Psychiatric Hospitals: State N	Served in State Psychiatric Hospitals: State %	Served in State Psychiatric Hospitals: U.S. N	Served in State Psychiatric Hospitals: U.S. %	Penetration rate per 1,000 population: State	Penetration rate per 1,000 population: U.S.	States Reporting
Gender							
Female	4,358	39.0%	62,483	36.1%	0.90	0.42	51
Male	6,818	61.0%	110,695	63.9%	1.45	0.76	51
Not Available	1	0.0%	129	0.1%	-	-	16
TOTAL	11,177	100%	173,307	100%	1.17	0.59	51

Note:

US totals are based on states reporting.

This table uses data from URS/DIG Table 3.

US totals are calculated uniquely for each data element based on only those states who reported numerator (clients served) data.

State Notes:

Gender: None

Age: See General Notes

Overall: See General Notes

ACCESS DOMAIN: TABLE 4: Persons Served by SMHA System through Medicaid and Other Funding Sources by Race and Gender, FY 2008

STATE: Georgia

Race/Ethnicity	Medicaid Only: State N	Non-Medicaid Only: State N	Both Medicaid & Other: State N	Total Served with Known Funding Status: State N	Medicaid Only: State %	Non-Medicaid Only: State %	Both Medicaid & Other: State %	Medicaid Only: U.S. N	Non-Medicaid Only: U.S. N	Both Medicaid & Other: U.S. N	Total Served with Known Funding Status: U.S. N	Medicaid Only: U.S. %	Non-Medicaid Only: U.S. %	Both Medicaid & Other: U.S. %	States Reporting
American Indian/Alaskan															
Native	61	173	16	250	24%	69%	6%	41,080	22,623	8,047	71,750	57%	32%	11%	46
Asian	140	432	25	597	23%	72%	4%	41,623	29,950	9,358	80,931	51%	37%	12%	46
Black/African American	18,223	23,600	3,175	44,998	40%	52%	7%	581,747	363,495	130,408	1,075,650	54%	34%	12%	46
Native Hawaiian/Pacific Islander	16	47	2	65	25%	72%	3%	3,192	5,874	2,813	11,879	27%	49%	24%	39
White	13,456	43,314	3,228	59,998	22%	72%	5%	1,522,663	1,525,453	454,267	3,502,383	43%	44%	13%	47
Hispanic	*	*	*	*	*	*	*	49,892	40,832	8,454	99,178	50%	41%	9%	8
Multi-Racial	554	906	97	1,557	36%	58%	6%	66,254	45,341	11,976	123,571	54%	37%	10%	34
Not Available	645	2,382	546	3,573	18%	67%	15%	281,355	254,695	61,657	597,707	47%	43%	10%	42
TOTAL	33,095	70,854	7,089	111,038	30%	64%	6%	2,587,807	2,288,263	686,981	5,563,051	47%	41%	12%	47

Hispanic Origin	Medicaid Only: State N	Non-Medicaid Only: State N	Both Medicaid & Other: State N	Total Served with Known Funding Status: State N	Medicaid Only: State %	Non-Medicaid Only: State %	Both Medicaid & Other: State %	Medicaid Only: U.S. N	Non-Medicaid Only: U.S. N	Both Medicaid & Other: U.S. N	Total Served with Known Funding Status: U.S. N	Medicaid Only: U.S. %	Non-Medicaid Only: U.S. %	Both Medicaid & Other: U.S. %	States Reporting
Hispanic or Latino	687	2,522	143	3,352	20%	75%	4%	313,107	257,010	101,866	671,983	47%	38%	15%	43
Not Hispanic or Latino	32,124	67,381	6,559	106,064	30%	64%	6%	1,731,033	1,722,599	475,367	3,928,999	44%	44%	12%	42
Not Available	284	951	387	1,622	18%	59%	24%	338,222	246,134	74,295	658,651	51%	37%	11%	37
TOTAL	33,095	70,854	7,089	111,038	30%	64%	6%	2,382,363	2,225,743	651,529	5,259,635	45%	42%	12%	44

Gender	Medicaid Only: State N	Non-Medicaid Only: State N	Both Medicaid & Other: State N	Total Served with Known Funding Status: State N	Medicaid Only: State %	Non-Medicaid Only: State %	Both Medicaid & Other: State %	Medicaid Only: U.S. N	Non-Medicaid Only: U.S. N	Both Medicaid & Other: U.S. N	Total Served with Known Funding Status: U.S. N	Medicaid Only: U.S. %	Non-Medicaid Only: U.S. %	Both Medicaid & Other: U.S. %	States Reporting
Female	17,286	37,827	3,713	58,826	29%	64%	6%	1,376,015	1,127,943	359,701	2,863,659	48%	39%	13%	47
Male	15,809	33,027	3,376	52,212	30%	63%	6%	1,206,945	1,135,391	318,439	2,660,775	45%	43%	12%	47
Not Available	-	-	-	-	-	-	-	4,848	24,930	8,841	38,619	13%	65%	23%	23
TOTAL	33,095	70,854	7,089	111,038	30%	64%	6%	2,587,807	2,288,263	686,981	5,563,051	47%	41%	12%	47

* Reported under Hispanic Origin

Note:

This table uses data from DIG Tables 5a, and 5b (Hispanic Origin).

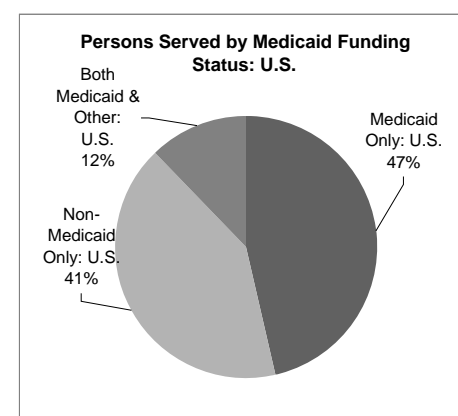
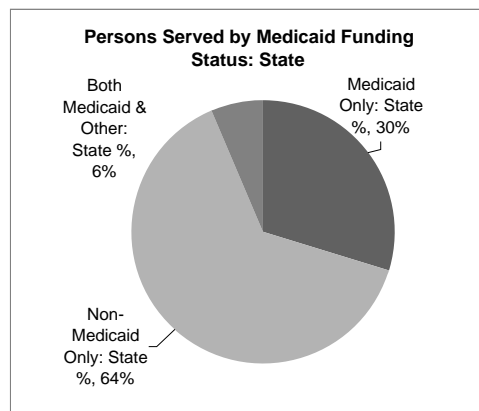
Duplication

Type of Medicaid Data Reported

Data based on Medicaid Paid Claims	Yes
Data based on Medicaid Eligibility, not Claims	-

State Notes

5a Age	See General Notes
5a Gender	None
5a Overall	See General Notes
5b Overall	See General Notes



ACCESS DOMAIN: TABLE 5: Demographic Characteristics of Adults with SMI and Children with SED Served by the State Mental Health Authority, FY 2008

STATE: Georgia

	Total Served with SMI/SED:	Total Served with SMI/SED:	Total Served with SMI/SED:	Total Served with SMI/SED:	Penetration rate per 1,000 population:	Penetration rate per 1,000 population:	Penetration rate per 1,000 population:	States Reporting
Age	State N	State %	U.S. N	U.S. %	population: State	South	U.S.	
0 to 12	9,008	11.0%	600,068	14.3%	4.9	17.5	11.3	56
13 to 17	11,519	14.1%	568,780	13.5%	16.5	26.5	26.3	56
18 to 20	2,647	3.2%	172,560	4.1%	6.9	15.1	13.5	56
21 to 64	56,337	69.0%	2,668,157	63.5%	9.9	15.9	14.9	57
65 to 74	1,672	2.0%	118,557	2.8%	3.2	5.8	6.0	57
75 and over	431	0.5%	66,511	1.6%	1.0	2.7	3.5	56
Not Available	-	-	9,607	0.2%	-	-	-	26
TOTAL	81,614	100%	4,204,240	100%	8.6	14.2	13.7	57

	Total Served with SMI/SED:	Total Served with SMI/SED:	Total Served with SMI/SED:	Total Served with SMI/SED:	Penetration rate per 1,000 population:	Penetration rate per 1,000 population:	Penetration rate per 1,000 population:	States Reporting
Gender	State N	State %	U.S. N	U.S. %	population: State	South	U.S.	
Female	43,493	53.3%	2,137,287	50.8%	9.0	14.7	13.8	57
Male	38,121	46.7%	2,037,729	48.5%	8.1	13.6	13.5	57
Not Available	-	-	29,224	0.7%	-	-	-	36
TOTAL	81,614	100%	4,204,240	100%	8.6	14.2	13.7	57

	Total Served with SMI/SED:	Total Served with SMI/SED:	Total Served with SMI/SED:	Total Served with SMI/SED:	Penetration rate per 1,000 population:	Penetration rate per 1,000 population:	Penetration rate per 1,000 population:	States Reporting
Race/Ethnicity	State N	State %	U.S. N	U.S. %	population: State	South	U.S.	
American Indian/Alaskan Native	190	0.2%	47,376	1.1%	5.8	4.4	16.1	52
Asian	473	0.6%	65,910	1.6%	1.8	0.2	4.9	54
Black/African American	34,539	42.3%	887,417	21.1%	12.1	147.4	22.9	54
Native Hawaiian/Pacific Islander	49	0.1%	10,584	0.3%	6.4	0.4	21.4	48
White	42,890	52.6%	2,616,436	62.2%	6.9	20.3	10.8	55
Hispanic	*	*	52,755	1.3%	*	0.9	18.8	10
Multi-Racial	984	1.2%	93,818	2.2%	8.8	8.8	21.5	44
Not Available	2,489	3.0%	404,452	9.6%	-	-	-	52
TOTAL	81,614	100%	4,204,240	99%	8.6	14.2	13.7	57

	Total Served with SMI/SED:	Total Served with SMI/SED:	Total Served with SMI/SED:	Total Served with SMI/SED:	Penetration rate per 1,000 population:	Penetration rate per 1,000 population:	Penetration rate per 1,000 population:	States Reporting
Hispanic Origin	State N	State %	U.S. N	U.S. %	population: State	South	U.S.	
Hispanic or Latino	2,126	2.6%	491,069	12.4%	2.9	7.9	11.0	50
Not Hispanic or Latino	77,672	95.2%	3,070,365	77.4%	8.8	13.5	12.6	50
Hispanic Status Unknown	1,816	2.2%	403,090	10.2%	-	-	-	52
TOTAL	81,614	100%	3,964,526	100%	8.6	13.5	13.4	52

Note:

This table uses data from URS/DIG Table 14a, Table 14b and from the US Census Bureau.

All denominators use US Census data from 2007.

US totals are calculated uniquely for each data element based on only those states who reported numerator (clients served) data.

Regional groupings of States based on SAMHSA's Block Grant Regions.

* Reported under Hispanic Origin

State Used Federal SMI Definition? Yes

State Used Federal SED Definition? Yes

State Notes:

14a Age See General Notes

Gender None

Race See General Notes

Overall See General Notes

14b Age See General Notes

Gender None

Race See General Notes

Overall See General Notes

APPROPRIATENESS DOMAIN: TABLE 1: Number of Admissions During the Year to State Hospital Inpatient and Community-Based Programs, FY 2008

STATE: Georgia

State Psychiatric Hospitals	State Admissions During the Year	State Total Served at the Start of Year	State Total Served During Year	U.S. Admissions During Year	U.S. Total Served at Start of Year	U.S. Total Served During Year	Admission Rate: State	Admission Rate: U.S.	States Reporting
Total	13,658	1,190	11,177	168,084	45,008	173,307	1.22	0.97	52
Children	1,493	52	1,264	16,024	2,015	14,958	1.18	1.07	38
Adults	12,165	1,138	9,913	151,981	42,908	158,281	1.23	0.96	51
Age NA	-	-	-	79	85	14	-	5.64	3

Other Inpatient	State Admissions During the Year	State Total Served at the Start of Year	State Total Served During Year	U.S. Admissions During Year	U.S. Total Served at Start of Year	U.S. Total Served During Year	Admission Rate: State	Admission Rate: U.S.	States Reporting
Total	115	17	145	448,509	37,475	383,132	0.79	1.17	38
Children	-	-	-	63,702	3,356	50,762	-	1.25	30
Adults	115	17	145	384,781	34,099	292,888	0.79	1.31	37
Age NA	-	-	-	26	20	41	-	0.63	6

Residential Treatment Centers	State Admissions During the Year	State Total Served at the Start of Year	State Total Served During Year	U.S. Admissions During Year	U.S. Total Served at Start of Year	U.S. Total Served During Year	Admission Rate: State	Admission Rate: U.S.	States Reporting
Total	109	80	177	22,306	9,561	21,936	0.62	1.02	33
Children	108	79	174	15,964	5,022	16,432	0.62	0.97	32
Adults	1	1	3	6,301	4,522	5,088	0.33	1.24	24
Age NA	-	-	-	41	17	-	-	-	1

Community Programs	State Admissions During the Year	State Total Served at the Start of Year	State Total Served During Year	U.S. Admissions During Year	U.S. Total Served at Start of Year	U.S. Total Served During Year	Admission Rate: State	Admission Rate: U.S.	States Reporting
Total	430,775	49,210	128,785	5,285,393	2,651,493	5,162,073	3.34	1.02	47
Children	125,426	8,901	30,778	1,587,478	645,739	1,411,934	4.08	1.12	47
Adults	305,349	40,309	98,007	3,696,054	2,004,325	3,745,867	3.12	0.99	47
Age NA	-	-	-	1,861	1,429	3,026	-	0.62	12

Note:

Admission Rate = number of admissions divided by total served during the year.

US Admissions During Year uses data from states reporting data only. States are only included in "US Total Served" if they also reported data on admissions.

US Total Served During Year is calculated using data in URS/DIG Table 3, State Total Served During Year is calculated using data from URS/DIG Tables 3.

This table uses data from URS/DIG Tables 3 and 6.

State Notes:

Age See General Notes

Gender None

Overall See General Notes

State Hospital Data includes inpatient hospital stays in state hospital Adult Mental Health, Secure, and C&A Short-Term Mental Health programs.

Other Inpatient Data includes authorizations for the community service, Community Based Inpatient. Discharge and length of stay data cannot be provided.

Residential Treatment Centers Data includes authorizations for the community service, Outdoor Therapeutic Program. Discharge and length of stay data cannot be provided.

Community Programs Data includes authorizations for any community service other than Community Based Inpatient or Outdoor Therapeutic Program.

Overall See General Notes

APPROPRIATENESS DOMAIN: TABLE 2: Length of Stay (LOS) in State Psychiatric Hospitals, Other Psychiatric Inpatient and Residential Treatment Centers, FY 2008

STATE: Georgia

	Average LOS (Days) Discharged Clients: State	Median LOS (Days) Discharged Clients: State	In Facility <1 Yr Average LOS: Resident Clients: State	In Facility <1 Yr Median LOS: Resident Clients: State	In Facility >1 Yr Average LOS: Resident Clients: State	In Facility >1 Yr Median LOS: Resident Clients: State	Average LOS (Days) Discharged Clients: U.S.	Median LOS (Days) Discharged Clients: U.S.	In Facility <1 Yr Average LOS: Resident Clients: U.S.	In Facility <1 Yr Median LOS: Resident Clients: U.S.	In Facility >1 Yr Average LOS: Resident Clients: U.S.	In Facility >1 Yr Median LOS: Resident Clients: U.S.	States Reporting
State Hospitals													
All Age Groups	-	-	-	-	-	-	125	40	61	53	1,088	749	5
Children	12	7	35	12	-	-	72	52	65	55	277	259	35
Adults	31	7	97	44	1,904	1,162	160	46	106	77	1,731	1,053	50
NA	-	-	-	-	-	-	17	3	13	14	40	30	1

	Average LOS (Days) Discharged Clients: State	Median LOS (Days) Discharged Clients: State	In Facility <1 Yr Average LOS: Resident Clients: State	In Facility <1 Yr Median LOS: Resident Clients: State	In Facility >1 Yr Average LOS: Resident Clients: State	In Facility >1 Yr Median LOS: Resident Clients: State	Average LOS (Days) Discharged Clients: U.S.	Median LOS (Days) Discharged Clients: U.S.	In Facility <1 Yr Average LOS: Resident Clients: U.S.	In Facility <1 Yr Median LOS: Resident Clients: U.S.	In Facility >1 Yr Average LOS: Resident Clients: U.S.	In Facility >1 Yr Median LOS: Resident Clients: U.S.	States Reporting
Other Inpatient													
All Age Groups	-	-	-	-	-	-	14	7	13	7	140	136	4
Children	-	-	-	-	-	-	12	8	23	19	352	366	24
Adults	-	-	-	-	-	-	47	9	32	26	432	406	33
NA	-	-	-	-	-	-	1	1	0	-	-	-	1

	Average LOS (Days) Discharged Clients: State	Median LOS (Days) Discharged Clients: State	In Facility <1 Yr Average LOS: Resident Clients: State	In Facility <1 Yr Median LOS: Resident Clients: State	In Facility >1 Yr Average LOS: Resident Clients: State	In Facility >1 Yr Median LOS: Resident Clients: State	Average LOS (Days) Discharged Clients: U.S.	Median LOS (Days) Discharged Clients: U.S.	In Facility <1 Yr Average LOS: Resident Clients: U.S.	In Facility <1 Yr Median LOS: Resident Clients: U.S.	In Facility >1 Yr Average LOS: Resident Clients: U.S.	In Facility >1 Yr Median LOS: Resident Clients: U.S.	States Reporting
Residential Treatment Centers													
All Age Groups	-	-	-	-	-	-	104	99	55	51	204	185	2
Children	-	-	-	-	-	-	171	144	126	119	468	500	28
Adults	-	-	-	-	-	-	300	201	94	83	802	666	19
NA	-	-	-	-	-	-	11	11	-	-	-	-	-

Note:

Resident clients are clients who were receiving services in inpatient settings at the end of the reporting period.

This table uses data from URS/DIG Table 6.

State Notes:

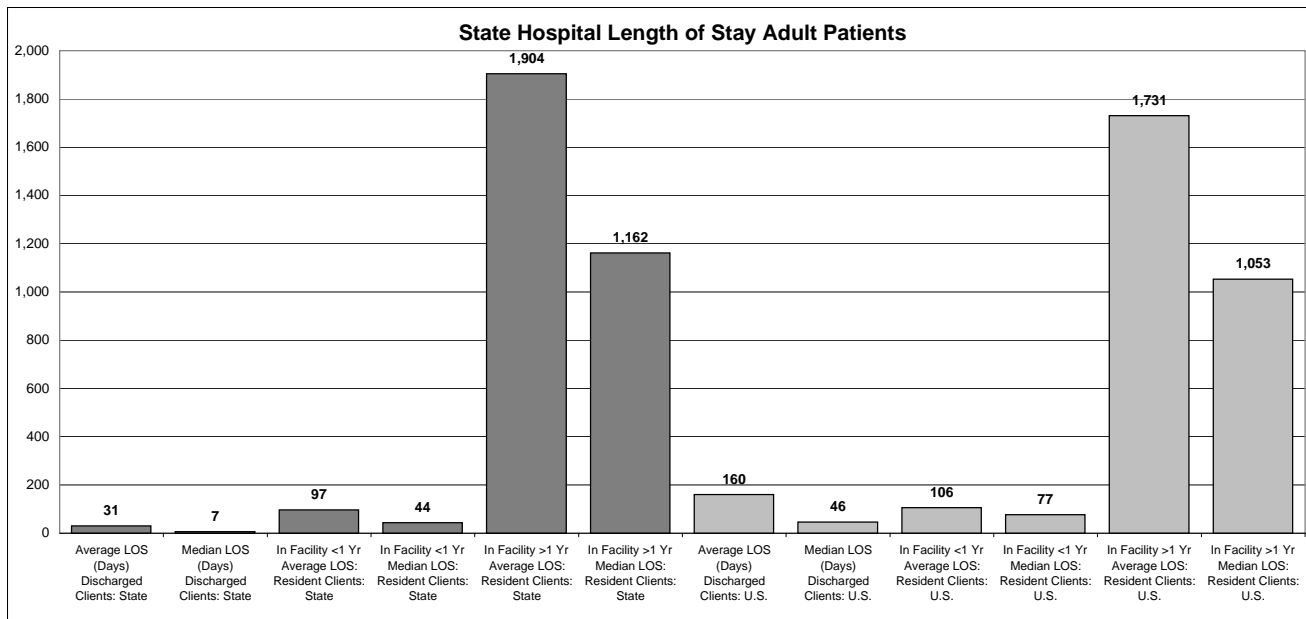
State Hospital Data includes inpatient hospital stays in state hospital Adult Mental Health, Secure, and C&A Short-Term Mental Health programs.

Other Inpatient Data includes authorizations for the community service, Community Based Inpatient. Discharge and length of stay data cannot be provided.

Residential Treatment Data includes authorizations for the community service, Outdoor Therapeutic Program. Discharge and length of stay data cannot be provided.

Community Programs Data includes authorizations for any community service other than Community Based Inpatient or Outdoor Therapeutic Program.

Overall See General Notes



APPROPRIATENESS DOMAIN: TABLE 3: Percent of Adults & Children Served who Meet the Federal Definition of SMI/SED, and Percent of Adults & Children Served who have Co-Occurring MH/AOD Disorders, FY 2008

STATE: Georgia

Adults and Children who meet the Federal Definitions of SMI/SED	State Average	US Average	US Median	States Reporting
Percent of Adults served through the SMHA who meet the Federal definition for SMI	59%	69%	71%	55
Percent of Children served through the SMHA who meet the Federal definition for SED	65%	70%	73%	55

Co-occurring MH and Substance Abuse Consumers	State Average	US Average	US Median	States Reporting
Percent of adults served through the SMHA who had a co-occurring MH and AOD disorder	6%	22%	19%	46
Percent of children served through the SMHA who had a co-occurring MH and AOD disorder	2%	6%	4%	45
Percent of adults served through the SMHA who meet the Federal definition of SMI who also have a co-occurring MH and AOD disorder	5%	25%	21%	45
Percent of children served through the SMHA who meet the Federal definition of SED who also have a co-occurring MH and AOD disorder	2%	7%	5%	42

Note:

This table uses data from URS/DIG Table 12.

Do All Adults Served by SMHA meet the Federal Definitions of SMI?

No

Do All Children Served by SMHA meet the Federal Definitions of SED?

No

State Notes:

None

APPROPRIATENESS DOMAIN: TABLE 4: Living Situation of Consumers Served by State Mental Health Agency Systems, FY 2008

STATE: Georgia

	Living Situation: State	Percent in Living Situation: State	Percent with Known Living Situation: State	Living Situation: U.S.	Percent in Living Situation: U.S.	Percent with Known Living Situation: U.S.	States Reporting
All Persons Served							
Private Residence	107,085	83.0%	83.1%	3,666,906	68.0%	80.8%	52
Foster Home	2,886	2.2%	2.2%	87,728	1.6%	1.9%	50
Residential Care	3,136	2.4%	2.4%	188,557	3.5%	4.2%	49
Crisis Residence	-	-	-	59,349	1.1%	1.3%	28
Residential Tx Centers	2,429	1.9%	1.9%	16,459	0.3%	0.4%	39
Institutional Setting	226	0.2%	0.2%	159,793	3.0%	3.5%	51
Jail/Correctional Facility	1,212	0.9%	0.9%	90,587	1.7%	2.0%	49
Homeless or Shelter	6,012	4.7%	4.7%	133,656	2.5%	2.9%	50
Other Living Situation	5,942	4.6%	4.6%	132,890	2.5%	2.9%	44
Living Situation NA	17	0.0%	-	857,937	15.9%	-	45
Total	128,945	100.0%	100.0%	5,393,865	100.0%	100.0%	55

	Living Situation: State	Percent in Living Situation: State	Percent with Known Living Situation: State	Living Situation: U.S.	Percent in Living Situation: U.S.	Percent with Known Living Situation: U.S.	States Reporting
Children under age 18							
Private Residence	23,850	77.3%	77.3%	988,716	70.9%	84.9%	51
Foster Home	2,789	9.0%	9.0%	64,044	4.6%	5.5%	49
Residential Care	-	-	-	21,460	1.5%	1.8%	40
Crisis Residence	-	-	-	10,520	0.8%	0.9%	20
Residential Tx Centers	2,429	7.9%	7.9%	14,700	1.1%	1.3%	38
Institutional Setting	16	0.1%	0.1%	20,951	1.5%	1.8%	46
Jail/Correctional Facility	100	0.3%	0.3%	18,257	1.3%	1.6%	45
Homeless or Shelter	749	2.4%	2.4%	6,094	0.4%	0.5%	42
Other Living Situation	933	3.0%	3.0%	20,458	1.5%	1.8%	41
Living Situation NA	3	0.0%	-	229,021	16.4%	-	42
Total	30,869	100.0%	100.0%	1,394,221	100.0%	100.0%	53

	Living Situation: State	Percent in Living Situation: State	Percent with Known Living Situation: State	Living Situation: U.S.	Percent in Living Situation: U.S.	Percent with Known Living Situation: U.S.	States Reporting
Adults over age 18							
Private Residence	83,235	84.9%	84.9%	2,676,322	67.1%	79.5%	52
Foster Home	97	0.1%	0.1%	23,240	0.6%	0.7%	43
Residential Care	3,136	3.2%	3.2%	167,017	4.2%	5.0%	49
Crisis Residence	-	-	-	48,829	1.2%	1.4%	28
Residential Tx Centers	-	-	-	1,711	0.0%	0.1%	20
Institutional Setting	210	0.2%	0.2%	138,765	3.5%	4.1%	51
Jail/Correctional Facility	1,112	1.1%	1.1%	72,315	1.8%	2.1%	49
Homeless or Shelter	5,263	5.4%	5.4%	127,429	3.2%	3.8%	50
Other Living Situation	5,009	5.1%	5.1%	112,073	2.8%	3.3%	44
Living Situation NA	14	0.0%	-	621,782	15.6%	-	45
Total	98,076	100.0%	100.0%	3,989,484	100.0%	100.0%	55

Note:

This table uses data from URS/DIG Table15.

State Notes

Reported data includes community consumers only. See also General Notes

APPROPRIATENESS DOMAIN: TABLE 5: Persons who were Homeless by Age, Gender, and Race, FY 2008
STATE: Georgia

	Homeless/ Living in Shelters: State N	Homeless/ Living in Shelters: State %	Homeless/ Living in Shelters: U.S. N	Homeless/ Living in Shelters: U.S. %	Percent of Total Consumers Served Homeless/ Living in Shelters: State	Percent of Total Consumers Served Homeless/ Living in Shelters: U.S.	States Reporting
Age							
0 to 17	749	12%	6,094	5%	2.4%	0.5%	42
18 to 64	5,192	86%	125,507	94%	5.5%	4.0%	50
65 and Over	71	1%	1,922	1%	2.0%	0.9%	48
Not Available	-	-	133	0%	-	4.4%	12
TOTAL	6,012	100.0%	133,656	100%	4.7%	2.9%	50

	Homeless/ Living in Shelters: State N	Homeless/ Living in Shelters: State %	Homeless/ Living in Shelters: U.S. N	Homeless/ Living in Shelters: U.S. %	Percent of Total Consumers Served Homeless/ Living in Shelters: State	Percent of Total Consumers Served Homeless/ Living in Shelters: U.S.	States Reporting
Gender							
Female	2,624	44%	52,445	39%	3.8%	2.2%	50
Male	3,388	56%	81,071	61%	5.7%	3.7%	50
Not Available	-	-	141	0%	-	1.8%	19
TOTAL	6,012	100.0%	133,656	100%	4.7%	2.9%	50

	Homeless/ Living in Shelters: State N	Homeless/ Living in Shelters: State %	Homeless/ Living in Shelters: U.S. N	Homeless/ Living in Shelters: U.S. %	Percent of Total Consumers Served Homeless/ Living in Shelters: State	Percent of Total Consumers Served Homeless/ Living in Shelters: U.S.	States Reporting
Race							
American Indian/Alaskan Native	15	0%	1,623	1%	5.2%	3.3%	47
Asian	94	2%	1,053	1%	13.9%	1.8%	42
Black/African American	2,858	48%	43,717	33%	5.3%	4.6%	49
Native Hawaiian/ Pacific Islander	3	0%	244	0%	3.8%	3.2%	29
White	2,640	44%	71,160	53%	3.9%	2.5%	48
Hispanic or Latino	*	*	1,015	1%	*	1.9%	4
Multi-Racial	58	1%	2,725	2%	3.2%	2.9%	32
Not Available	344	6%	12,119	9%	8.0%	2.7%	41
TOTAL	6,012	100.0%	133,656	100%	4.7%	2.9%	50

	Homeless/ Living in Shelters: State N	Homeless/ Living in Shelters: State %	Homeless/ Living in Shelters: U.S. N	Homeless/ Living in Shelters: U.S. %	Percent of Total Consumers Served Homeless/ Living in Shelters: State	Percent of Total Consumers Served Homeless/ Living in Shelters: U.S.	States Reporting
Hispanic Origin							
Hispanic or Latino	230	4%	13,834	11%	5.9%	2.4%	46
Not Hispanic or Latino	5,473	91%	97,820	79%	4.5%	2.9%	45
Not Available	309	5%	12,103	10%	8.2%	3.7%	33
TOTAL	6,012	100.0%	123,757	100%	4.7%	2.9%	46

When is Living Situation Measured:	At Admission	At Discharge	Updated Quarterly	Other Time Period
Georgia	Yes	Yes	-	See General Notes
U.S.	38	21	4	30

Note:

US totals are based on states reporting.

This table uses data from URS/DIG Table 15.

US totals are calculated uniquely for each data element based on only those states who reported numerator (clients served) data.

* Reported under Hispanic Origin

State Notes:

Reported data includes community consumers only. See also General Notes

APPROPRIATENESS DOMAIN: TABLE 6: Evidence-Based Practices Reported by SMHAs, FY 2008

STATE: Georgia

	EBP Services: State	SMI Population: State	EBP Services: U.S.	SMI Population: U.S.	Penetration Rate: % of SMI Consumers Receiving EBP Services: State	Penetration Rate: % of SMI Consumers Receiving EBP Services: U.S.	Measuring Fidelity: State	Measuring Fidelity: U.S.	States Reporting
Adult EBP Services									
Supported Housing	1,750	57,308	65,797	1,968,110	3.1%	3.3%	-	3	34
Supported Employment	1,936	57,308	40,387	2,289,143	3.4%	1.8%	-	12	41
Assertive Community Treatment	893	57,308	58,502	2,568,326	1.6%	2.3%	-	22	40
Family PsychoEducation	-	-	25,127	1,411,366	-	1.8%	-	3	19
Dual Diagnosis Treatment	-	-	46,706	1,219,829	-	3.8%	-	9	25
Illness Self Management	4,467	57,308	147,089	1,617,087	7.8%	9.1%	-	6	22
Medications Management	-	-	253,414	1,124,289	-	22.5%	-	1	17

	EBP Services: State	SED Population: State	EBP Services: U.S.	SED Population: U.S.	Penetration Rate: % of SED Consumers Receiving EBP Services: State	Penetration Rate: % of SED Consumers Receiving EBP Services: U.S.	Measuring Fidelity: State	Measuring Fidelity: U.S.	States Reporting
Child/Adolescent EBP Services									
Therapeutic Foster Care	-	-	16,291	781,981	-	2.1%	-	5	28
Multi Systemic Therapy	-	-	8,126	672,608	-	1.2%	-	8	21
Functional Family Therapy	3,293	19,974	7,027	443,706	16.5%	1.6%	-	7	14

Note:

US totals are based on states reporting.

This table uses data from URS/DIG Tables 16 and 17

US totals are calculated uniquely for each data element based on only those states who reported numerator (clients served) data.

State Notes:

T16 Table 16 includes community consumers only. See also General Notes

T17 Table 17 includes community consumers only. See also General Notes

OUTCOMES DOMAIN: TABLE 1: Employment Status of Adult Mental Health Consumers Served in the Community by Age & Gender, FY 2008

STATE: Georgia

Age	Employed: State N	Unemployed: State N	Adults in Labor Force*: State N	Adults with Known Employment Status**: State N	Employed as % of those in Labor Force: State	Employed as % of those in Labor Force: U.S.	Employed as % of Served in Community: State	Employed as % of Served in Community: U.S.	States Reporting
18 to 20	968	2,064	3,032	5,327	32%	38%	18%	18%	43
21 to 64	14,763	26,788	41,551	89,184	36%	40%	17%	23%	46
65 and Over	125	228	353	3,513	35%	26%	4%	7%	42
Not Available	-	-	-	-	-	55%	-	20%	18
TOTAL	15,856	29,080	44,936	98,024	35%	39%	16%	21%	56

Gender	Employed: State N	Unemployed: State N	Adults in Labor Force*: State N	Adults with Known Employment Status**: State N	Employed as % of those in Labor Force: State	Employed as % of those in Labor Force: U.S.	Employed as % of Served in Community: State	Employed as % of Served in Community: U.S.	States Reporting
Female	9,549	16,438	25,987	56,963	37%	40%	17%	21%	55
Male	6,307	12,642	18,949	41,061	33%	39%	15%	22%	55
Not Available	-	-	-	-	-	22%	-	17%	26
TOTAL	15,856	29,080	44,936	98,024	35%	39%	16%	21%	56

What Populations are Reported:

Community consumers only.

All Clients = 33

Some Clients = 12

When is Employment Status Measured?	At Admission	At Discharge	Updated Monthly	Updated Quarterly	Other Time Period
Georgia	Yes	Yes	-	-	See General Notes
U.S.	38	22	1	5	25

Note:

*Adults Served in Labor Force is the sum of MH consumers employed plus unemployed.

**Adults Served with Known Employment Status excludes persons for whom employment status was unknown.

MH Consumers Employed as % of Total Adults Served uses Adults Served as the denominator.

MH Consumers Employed as % of Adults served in Labor Force uses persons employed or Unemployed as the denominator.

This table uses data from URS/DIG Table 4.

State Notes:

Age See General Notes

Gender None

Overall Table 4 includes community consumers only. See also General Notes

OUTCOMES DOMAIN: TABLE 1a: Employment Status of Adult Mental Health Consumers Served in the Community by Diagnosis, FY 2008

STATE: Georgia

Diagnosis	Employed: State	Unemployed: State	Adults in Labor Force*: State	Adults with Known Employment Status**: State	Employed as % of those in Labor Force: State	Employed as % of those in Labor Force: U.S.	Employed as % of Served in Community: State	Employed as % of Served in Community: U.S.	States Reporting	Percent of Consumers with Dx: State	Percent of Consumers with Dx: U.S.
Schizophrenia and Related Disorders		-	-		-	27%	-	11%	43	-	14.5%
Bipolar and Mood Disorders		-	-		-	40%	-	22%	43	-	44.7%
Other Psychoses		-	-		-	29%	-	15%	42	-	3.1%
All Other Diagnoses		-	-		-	48%	-	30%	41	-	29.6%
No Diagnosis and Deferred Diagnosis		-	-		-	52%	-	35%	38	-	8.0%
TOTAL		-	-		-	42%	-	23%	43	-	100.0%

State Notes: None

Note:

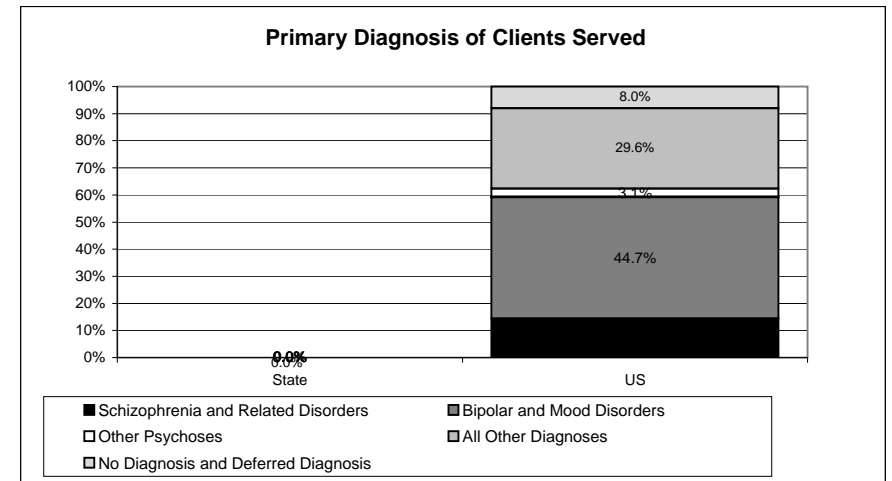
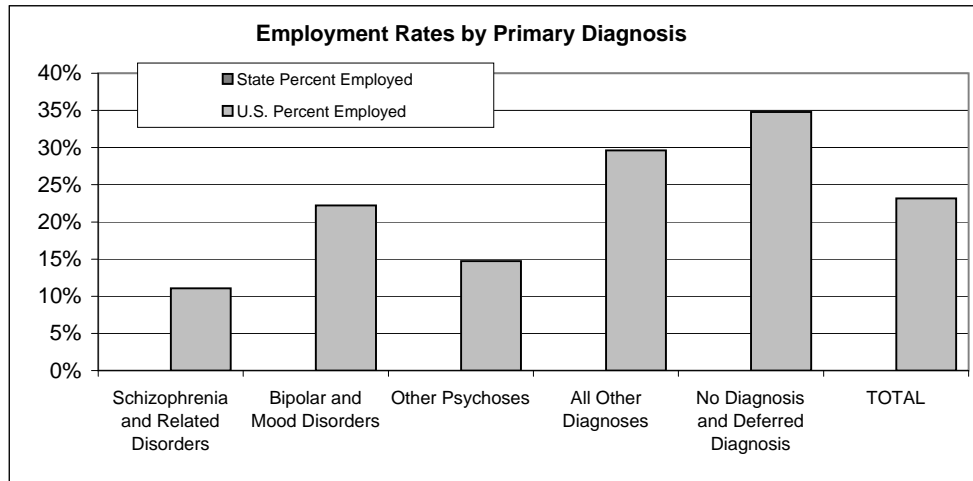
*Adults Served in Labor Force is the sum of MH consumers employed plus unemployed.

**Adults Served with Known Employment Status excludes persons for whom employment status was unknown.

MH Consumers Employed as % of Total Adults Served uses Adults Served as the denominator.

MH Consumers Employed as % of Adults served in Labor Force uses persons employed or Unemployed as the denominator.

This table uses data from URS/DIG Table 4a.



OUTCOMES DOMAIN: TABLE 2: Consumer Survey Results, FY 2008

STATE: Georgia

Indicators	Children: State	Children: U.S. Average	States Reporting	Adults: State	Adults: U.S. Average	States Reporting
1. Percent Reporting Positively About Access.	67%	84%	53	81%	85%	54
2. Percent Reporting Positively About Quality and Appropriateness for Adults / Reporting Positively about Satisfaction for Children.	62%	83%	54	88%	87%	54
3. Percent Reporting Positively About Outcomes.	44%	64%	54	75%	72%	54
4. Percent of Family Members Reporting on Participation In treatment Planning.	68%	87%	54			
5. Percent of Family Members Reporting High Cultural Sensitivity of Staff.	85%	93%	53			
6. Percent of Adults Reporting on Participation In Treatment Planning.				71%	83%	54
7. Percent of Adults Reporting on Positively about General Satisfaction with Services.				86%	88%	54

Note: U.S. Average Children & Adult rates are calculated only for states that used a version of the MHSIP Consumer Survey

This table uses data from URS/DIG Table 11.

Children/Family	State	U.S.
Type of Survey Used	YSS-F	YSS-F = 41

Type of Adult Consumer Survey Used	28-Item MHSIP	Other MHSIP	Other Survey
State	Yes	-	-
U.S.	29	22	2

Did you use a Spanish translation?	State	U.S.
Children	-	23
Adults	-	26

Sample Size & Response Rate	State: Children	U.S.: Children	States Reporting: Children	State: Adults	U.S.: Adults	States Reporting: Adults
Response Rate	13%	47%	47	100.0%	52.9%	45
Number of Surveys Attempted (sent out)	2,850	153,693	46	4,809	224,366	45
Number of Surveys Contacts Made	2,535	145,844	42	4,809	230,325	41
Complete Surveys	339	64,689	50	4,809	151,370	49

Populations covered in survey	State: Children	U.S.: Children	State: Adults	U.S.: Adults
Sample	Yes	42	Yes	45
All Consumers	-	11	-	7

Sample Approach	State: Children	U.S.: Children	State: Adults	U.S.: Adults
Random Sample	Yes	12	-	9
Stratified Sample	-	14	-	14
Convenience Sample	-	20	Yes	23
Other Sample	-	8	-	8

Who is Sampled?	State	U.S.	State	U.S.
Current Clients	Yes	50	Yes	52
Former Clients	-	19	-	18

Populations included in sample: (e.g., all adults, only adults with SMI, etc.)	State: Children	U.S.: Children	State: Adults	U.S.: Adults
All Children or Adults Served	All Children	33	All Adult Consumers	35
SMI Adults or SED Children	-	18	-	18
Persons Covered by Medicaid	-	9	-	11
Other	-	10	-	6

State Notes:

Because participants in Georgia's consumer survey were not chosen randomly, confidence intervals are not reported. Sampling error for the C&A family survey - whose participants were chosen through probability sampling techniques - is +/- 5%.

OUTCOMES DOMAIN: TABLE 3: Consumer Survey Results, by Race/Ethnicity, FY 2008

STATE: Georgia

Race/Ethnicity	Reporting Positively About Access (Adults): State	Reporting Positively About Access (Adults): U.S. Average	Reporting Positively About Quality and Appropriateness (Adults): State	Reporting Positively About Quality & Appropriateness (Adults): U.S. Average	Reporting Positively About Outcomes (Adults): State	Reporting Positively About Outcomes (Adults): U.S. Average	Adults Reporting on Participation In Treatment Planning: State	Adults Reporting on Participation In Treatment Planning: U.S.	Adults Reporting Positively about General Satisfaction with Services: State	Adults Reporting Positively about General Satisfaction with Services: U.S.	Adults Positive About Social Connectedness: State	Adults Positive About Social Connectedness: U.S.	Adults Positive About Improved Functioning: State	Adults Positive About Improved Functioning: U.S.	States
Total	-	86%	-	87%	-	73%	-	83%	-	88%	-	73%	-	71%	44
American Indian/Alaskan Native	-	83%	-	86%	-	71%	-	82%	-	87%	-	74%	-	71%	37
Asian	-	89%	-	87%	-	76%	-	88%	-	90%	-	76%	-	72%	35
Black/African American	-	88%	-	89%	-	77%	-	83%	-	89%	-	77%	-	75%	41
Native Hawaiian/Pacific Islander	-	83%	-	83%	-	75%	-	77%	-	86%	-	77%	-	75%	26
White	-	86%	-	87%	-	72%	-	83%	-	88%	-	72%	-	71%	41
Multi-Racial	-	82%	-	85%	-	70%	-	83%	-	86%	-	69%	-	69%	28
Other	-	86%	-	83%	-	74%	-	84%	-	88%	-	74%	-	71%	41
Hispanic	-	87%	-	89%	-	76%	-	88%	-	90%	-	75%	-	73%	37

Race/Ethnicity	Reporting Positively About Access for Children: State	Reporting Positively About Access for Children: U.S.	Reporting Positively About General Satisfaction with Services for Children: State	Reporting Positively About General Satisfaction with Services for Children: U.S.	Reporting Positively About Outcomes: State	Reporting Positively About Outcomes: U.S.	Reporting Positively about Participation In Treatment Planning: State	Reporting Positively about Participation In Treatment Planning: U.S.	Percent Reporting High Cultural Sensitivity of Staff: State	Percent Reporting High Cultural Sensitivity of Staff: State	Families Positive About Social Connectedness: State	Families Positive About Social Connectedness: U.S.	Families Positive About Improved Functioning: State	Families Positive About Improved Functioning: U.S.	States
Total	-	83%	-	84%	-	65%	-	87%	-	93%	-	85%	-	65%	40
American Indian/Alaskan Native	-	80%	-	82%	-	66%	-	85%	-	91%	-	85%	-	66%	30
Asian	-	87%	-	89%	-	71%	-	91%	-	94%	-	87%	-	71%	37
Black/African American	-	85%	-	86%	-	63%	-	87%	-	93%	-	86%	-	62%	17
Native Hawaiian/Pacific Islander	-	85%	-	82%	-	71%	-	87%	-	92%	-	91%	-	71%	26
White	-	81%	-	81%	-	62%	-	87%	-	91%	-	84%	-	62%	36
Multi-Racial	-	82%	-	83%	-	61%	-	87%	-	94%	-	85%	-	63%	33
Other	-	87%	-	88%	-	70%	-	88%	-	94%	-	87%	-	71%	34
Hispanic	-	87%	-	88%	-	70%	-	89%	-	95%	-	88%	-	71%	26

Note:

This table uses data from URS/DIG Table 11a.

State Notes:

None

OUTCOMES DOMAIN: TABLE 4: Change in Social Connectedness & Functioning, FY 2008

STATE: Georgia

Indicators	Children: State	Children: U.S. Average	Children: U.S. Median	Children: States Reporting	Adults: State	Adults: U.S. Average	Adults: U.S. Median	Adults: States Reporting
1. Percent Reporting Improved Social Connectedness From Services	73%	86%	83%	49	78%	73%	71%	51
2. Percent Reporting Improved Functioning From Services	41%	65%	61%	52	77%	71%	71%	52

This table uses data from URS/DIG Table 9.

Note: U.S. Average & Median rates are calculated only for states that used the recommended Social Connectedness & Functioning questions.

Adult Social Connectedness and Functioning Measures	State	U.S.
1. Did you use the recommended new Social Connectedness Questions?	Yes	44
If No, what measure did you use?	-	-
2: Did you use the recommended new Functioning Domain Questions?	Yes	45
If No, what measure did you use?	-	-
3. Did you collect these as part of your MHSIP Adult Consumer Survey?	Yes	44
If No, what source did you use?	-	-

Child/Family Social Connectedness and Functioning Measures	State	U.S.
4: Did you use the recommended new Social Connectedness Questions?	Yes	44
If No, what measure did you use?	-	-
5: Did you use the recommended new Functioning Domain Questions?	Yes	45
If No, what measure did you use?	-	-
6. Did you collect these as part of your YSS-F Survey?	Yes	44
If No, what source did you use?	-	-

State Notes:

None

OUTCOMES DOMAIN: TABLE 5: Civil (Non Forensic) & Forensic Patients Readmission within 30 Days by Age, Gender, and Race, FY 2008

STATE: Georgia

Age	Civil Patients Readmissions: State N	Civil Patients Discharges: State N	Civil Patients Readmissions: State %	Civil Patients Readmissions: U.S. N	Civil Patients Discharges: U.S. N	Civil Patients Readmissions: U.S. %	States Reporting	Forensic Patients Readmissions: State N	Forensic Patients Discharges: State N	Forensic Patients Readmissions: State %	Forensic Patients Readmissions: U.S. N	Forensic Patients Discharges: U.S. N	Forensic Patients Readmissions: U.S. %	State Reporting
0 to 12	56	401	14.0%	307	3,380	9.1%	18	-	-	-	-	11	-	-
13 to 17	94	1,079	8.7%	921	11,605	7.9%	25	-	2	-	13	431	3.0%	5
18 to 20	104	725	14.3%	727	7,750	9.4%	38	2	43	4.7%	50	985	5.1%	17
21 to 64	1,367	11,385	12.0%	11,470	121,786	9.4%	47	38	650	5.8%	649	17,050	3.8%	36
65 to 74	24	203	11.8%	244	2,899	8.4%	33	-	8	-	8	333	2.4%	5
75 and Over	2	41	4.9%	78	1,267	6.2%	20	-	5	-	4	81	4.9%	4
Not Available	-	-	-	24	120	20.0%	2	-	-	-	8	56	14.3%	1
TOTAL	1,647	13,834	11.9%	13,771	148,807	9.3%	48	40	708	5.6%	732	18,947	3.9%	38

Gender	Civil Patients Readmissions: State N	Civil Patients Discharges: State N	Civil Patients Readmissions: State %	Civil Patients Readmissions: U.S. N	Civil Patients Discharges: U.S. N	Civil Patients Readmissions: U.S. %	States Reporting	Forensic Patients Readmissions: State N	Forensic Patients Discharges: State N	Forensic Patients Readmissions: State %	Forensic Patients Readmissions: U.S. N	Forensic Patients Discharges: U.S. N	Forensic Patients Readmissions: U.S. %	State Reporting
Female	664	5,878	11.3%	5,114	55,958	9.1%	44	4	92	4.3%	178	3,466	5.1%	29
Male	983	7,956	12.4%	7,582	80,595	9.4%	45	36	616	5.8%	553	15,469	3.6%	35
Not Available	-	-	-	1,075	12,254	8.8%	3	-	-	-	1	12	8.3%	1
TOTAL	1,647	13,834	11.9%	13,771	148,807	9.3%	48	40	708	5.6%	732	18,947	3.9%	38

Race/Ethnicity	Civil Patients Readmissions: State N	Civil Patients Discharges: State N	Civil Patients Readmissions: State %	Civil Patients Readmissions: U.S. N	Civil Patients Discharges: U.S. N	Civil Patients Readmissions: U.S. %	States Reporting	Forensic Patients Readmissions: State N	Forensic Patients Discharges: State N	Forensic Patients Readmissions: State %	Forensic Patients Readmissions: U.S. N	Forensic Patients Discharges: U.S. N	Forensic Patients Readmissions: U.S. %	State Reporting
American Indian/Alaskan Native	-	8	-	189	1,920	9.8%	19	-	-	-	8	159	5.0%	4
Asian	17	94	18.1%	90	1,189	7.6%	23	-	5	-	7	298	2.3%	5
Black/African American	943	6,665	14.1%	4,134	37,789	10.9%	38	27	447	6.0%	279	7,260	3.8%	23
Native Hawaiian/Pacific Islander	-	-	-	1	41	2.4%	1	-	-	-	12	145	8.3%	3
White	648	6,592	9.8%	7,590	87,286	8.7%	45	13	232	5.6%	340	8,492	4.0%	30
Hispanic	28	327	8.6%	346	3,704	9.3%	10	-	14	-	27	1,163	2.3%	6
Multi-Racial	-	-	-	54	912	5.9%	13	-	-	-	7	254	2.8%	4
Race Not Available	11	148	7.4%	1,362	15,966	8.5%	28	-	10	-	52	1,176	4.4%	9
TOTAL	1,647	13,834	11.9%	13,771	148,807	9.3%	48	40	708	5.6%	732	18,947	3.9%	38

Hispanic Origin	Civil Patients Readmissions: State N	Civil Patients Discharges: State N	Civil Patients Readmissions: State %	Civil Patients Readmissions: U.S. N	Civil Patients Discharges: U.S. N	Civil Patients Readmissions: U.S. %	States Reporting	Forensic Patients Readmissions: State N	Forensic Patients Discharges: State N	Forensic Patients Readmissions: State %	Forensic Patients Readmissions: U.S. N	Forensic Patients Discharges: U.S. N	Forensic Patients Readmissions: U.S. %	State Reporting
Hispanic or Latino	-	-	-	946	11,176	8.5%	26	-	-	-	45	1,565	2.9%	11
Not Hispanic or Latino	-	-	-	5,697	69,610	8.2%	30	-	-	-	319	7,928	4.0%	20
Not Available	-	-	-	1,122	10,355	10.8%	16	-	-	-	150	2,332	6.4%	12
TOTAL	1,647	13,834	11.9%	13,771	148,807	9.3%	48	40	708	5.6%	732	18,947	3.9%	38

Forensics included in "non forensic" data?

No

Note:

US totals are based on states reporting.

This table uses data from URS/DIG Table 20.

State Notes:

Counts derived from the episode files submitted to NASMHPD's NRI. Only non-forensic mental health units (discharge) are included. Counts are unduplicated episodes. Age based upon age at discharge.

OUTCOMES DOMAIN: TABLE 6: Civil (Non Forensic) & Forensic Patients Readmission within 180 Days by Age, Gender and Race, FY 2008

STATE: Georgia

	Civil Patients Readmissions: State N	Civil Patients Discharges: State N	Civil Patients Readmissions: State %	Civil Patients Readmissions: U.S. N	Civil Patients Discharges: U.S. N	Civil Patients Readmissions: U.S. %	States Reporting	Forensic Patients Readmissions: State N	Forensic Patients Discharges: State N	Forensic Patients Readmissions: State %	Forensic Patients Readmissions: U.S. N	Forensic Patients Discharges: U.S. N	Forensic Patients Readmissions: U.S. %	State Reporting
Age														
0 to 12	88	401	21.9%	650	3,380	19.2%	20	-	-	-	1	11	9.1%	1
13 to 17	173	1,079	16.0%	1,918	11,605	16.5%	31	-	2	-	33	431	7.7%	9
18 to 20	190	725	26.2%	1,555	7,750	20.1%	43	6	43	14.0%	136	985	13.8%	26
21 to 64	3,100	11,385	27.2%	26,871	121,786	22.1%	47	87	650	13.4%	2,070	17,050	12.1%	42
65 to 74	50	203	24.6%	527	2,899	18.2%	36	-	8	-	31	333	9.3%	15
75 and Over	4	41	9.8%	143	1,267	11.3%	27	-	5	-	8	81	9.9%	7
Not Available	-	-	-	56	120	46.7%	2	-	-	-	21	56	37.5%	1
TOTAL	3,605	13,834	26.1%	31,720	148,807	21.3%	49	93	708	13.1%	2,300	18,947	12.1%	44

	Civil Patients Readmissions: State N	Civil Patients Discharges: State N	Civil Patients Readmissions: State %	Civil Patients Readmissions: U.S. N	Civil Patients Discharges: U.S. N	Civil Patients Readmissions: U.S. %	States Reporting	Forensic Patients Readmissions: State N	Forensic Patients Discharges: State N	Forensic Patients Readmissions: State %	Forensic Patients Readmissions: U.S. N	Forensic Patients Discharges: U.S. N	Forensic Patients Readmissions: U.S. %	State Reporting
Gender														
Female	1,470	5,878	25.0%	12,142	55,958	21.7%	46	11	92	12.0%	505	3,466	14.6%	34
Male	2,135	7,956	26.8%	17,041	80,595	21.1%	46	82	616	13.3%	1,794	15,469	11.6%	44
Not Available	-	-	-	2,537	12,254	20.7%	5	-	-	-	1	12	8.3%	1
TOTAL	3,605	13,834	26.1%	31,720	148,807	21.3%	49	93	708	13.1%	2,300	18,947	12.1%	44

	Civil Patients Readmissions: State N	Civil Patients Discharges: State N	Civil Patients Readmissions: State %	Civil Patients Readmissions: U.S. N	Civil Patients Discharges: U.S. N	Civil Patients Readmissions: U.S. %	States Reporting	Forensic Patients Readmissions: State N	Forensic Patients Discharges: State N	Forensic Patients Readmissions: State %	Forensic Patients Readmissions: U.S. N	Forensic Patients Discharges: U.S. N	Forensic Patients Readmissions: U.S. %	State Reporting
Race/Ethnicity														
American Indian/Alaskan Native	-	8	-	370	1,920	19.3%	21	-	-	-	25	159	15.7%	10
Asian	31	94	33.0%	236	1,189	19.8%	34	-	5	-	32	298	10.7%	10
Black/African American	2,119	6,665	31.8%	9,585	37,789	25.4%	42	65	447	14.5%	968	7,260	13.3%	32
Native Hawaiian/ Pacific Islander	-	-	-	2	41	4.9%	2	-	-	-	37	145	25.5%	3
White	1,361	6,592	20.6%	17,526	87,286	20.1%	45	26	232	11.2%	982	8,492	11.6%	37
Hispanic or Latino	70	327	21.4%	694	3,704	18.7%	12	2	14	14.3%	96	1,163	8.3%	10
Multi-Racial	-	-	-	121	912	13.3%	17	-	-	-	26	254	10.2%	7
Not Available	24	148	16.2%	3,186	15,966	20.0%	33	-	10	-	134	1,176	11.4%	16
TOTAL	3,605	13,834	26.1%	31,720	148,807	21.3%	49	93	708	13.1%	2,300	18,947	12.1%	44

	Civil Patients Readmissions: State N	Civil Patients Discharges: State N	Civil Patients Readmissions: State %	Civil Patients Readmissions: U.S. N	Civil Patients Discharges: U.S. N	Civil Patients Readmissions: U.S. %	States Reporting	Forensic Patients Readmissions: State N	Forensic Patients Discharges: State N	Forensic Patients Readmissions: State %	Forensic Patients Readmissions: U.S. N	Forensic Patients Discharges: U.S. N	Forensic Patients Readmissions: U.S. %	State Reporting
Hispanic Origin														
Hispanic or Latino	-	-	-	2,189	11,176	19.6%	28	-	-	-	150	1,565	9.6%	17
Not Hispanic or Latino	-	-	-	13,551	69,610	19.5%	30	-	-	-	1,070	7,928	13.5%	25
Not Available	-	-	-	2,470	10,355	23.9%	16	-	-	-	346	2,332	14.8%	12
TOTAL	3,605	13,834	26.1%	31,720	148,807	21.3%	49	93	708	13.1%	2,300	18,947	12.1%	44

Forensics included in "non forensic" data?

No

Note:

US totals are based on states reporting.

This table uses data from URS/DIG Table 20.

State Notes:

Counts derived from the episode files submitted to NASMHPD's NRI. Only non-forensic mental health units (discharge) are included. Counts are unduplicated episodes. Age based upon age at discharge.

STRUCTURE DOMAIN: TABLE 1: State Mental Health Agency Controlled Expenditures for Mental Health, FY 2006**STATE: Georgia**

	Expenditures: State	Percent of Total Expenditures: State	Expenditures: U.S.	Percent of Total Expenditures: U.S.
State Hospitals-Inpatient	\$273,494,658	48%	\$8,547,699,317	27%
Other 24-Hour Care	-	-	\$5,801,277,824	19%
Ambulatory/Community	\$291,529,673	52%	\$16,045,001,581	52%
TOTAL	\$565,024,331	-	\$31,116,017,304	-

Note:

Total also includes additional SMHA Expenditures for research, training, administration, and other central and regional office expenditures.

Data from NRI's Funding Sources and Expenditures of State Mental Health Agencies, FY 2006 report, Table 18 "SMHA-Controlled Expenditures for Mental Health Services."

U.S. Totals are based on 51 states reporting.

More information on the State Mental Health Agency's Revenues & Expenditures as well as State Footnotes can be found on the NRI website:

<http://www.nri-inc.org/projects/Profiles/RevenuesExpenditures.cfm>

STRUCTURE DOMAIN: TABLE 2: State Mental Health Agency Controlled Revenues by Funding Source, FY 2006

STATE: Georgia

	State Hospital: State Revenues	State Hospital: Percent Total: State	State Hospital: Percent Total: U.S.	Ambulatory/ Community: State Revenues	Ambulatory/ Community % Total: State	Ambulatory/ Community % Total: U.S.
Medicaid	-	-	26.8%	\$1,013,831	0.3%	52.4%
Community MH Block Grant	-	-	-	\$12,919,994	4.4%	1.8%
Other SAMHSA	-	-	0.0%	\$241,493	0.1%	0.3%
Other Federal (non-SAMHSA)	\$9,536,587	3.5%	3.5%	\$43,882,149	15.1%	3.4%
State	\$262,451,014	96.0%	65.6%	\$208,639,373	71.6%	35.4%
Other	\$1,507,057	0.6%	4.1%	\$24,832,833	8.5%	6.7%
TOTAL	\$273,494,658	100%	100%	\$291,529,673	100%	100%

Note:

Data from NRI's Funding Sources and Expenditures of State Mental Health Agencies, FY 2006 report.

State Mental Health Agency Controlled Expenditures and Revenues, Tables 24, 25, and 26.

This Table does not show Revenues for state central office including Research, Training, and Administration expenses.

More information on the State Mental Health Agency's Revenues & Expenditures as well as State Footnotes can be found on the NRI website:

<http://www.nri-inc.org/projects/Profiles/RevenuesExpenditures.cfm>

STRUCTURE DOMAIN: TABLE 3:Federal Mental Health Block Grant Expenditures for Non-Direct Service Activities, FY 2008**STATE : Georgia**

	State Non Direct Block Grant Expenditures	Percent Total: State	Percent Total: U.S.
Technical Assistance Activities	\$13,500	4.3%	30.0%
Planning Council	\$70,000	22.1%	3.2%
Administration	\$47,200	14.9%	17.0%
Data Collection/Reporting	-	-	7.4%
Other Activities	\$185,580	58.7%	42.5%
Total	\$316,280	100.0%	100.0%

Note:

This table uses data from URS/DIG Table 8.

State Notes:

None

STRUCTURE DOMAIN: TABLE 4: Mental Health Programs Funded by the Federal Mental Health Block Grant, FY 2008

STATE: Georgia

Programs = 44

\$11,886,607

Agency Name	Address	Agency Director	Phone Number	Mental Health Block Grant
Cobb County CSB	3830 South Cobb Drive, Suite 300; Smyrna, GA 30080	Tod Citron	(770) 429-5000	\$111,939
GA Mental Health Consumer Network	-	-	-	\$286,447
Fulton-DeKalb Hospital Authority	80 Jessie Hill JR Dr., P.O. Box 26238; Atlanta, GA 30303	William Reid	(404) 616-4743	\$69,915
Employment Matters, Inc.	-	-	-	\$83,581
Douglas County CSB	3830 South Cobb Drive, Suite 300; Smyrna, GA 30080	Tod Citron	(770) 429-5000	\$74,495
DeKalb CSB	445 Winn Way, Room 464; Decatur, GA 30030-1707	Gary Ritchie	(404) 294-3836	\$157,214
CSB of Middle Georgia	2121 A Bellevue Road; Dublin, GA 31021-2998	Patsy Thomas, Ed.D.	(478) 272-1190	\$262,609
CSB of East Central Georgia	3421 Mike Padgett Highway; Augusta, GA 30906-3815	Charles D. Williamson	(706) 432-7800	\$161,835
Creative Community Services, Inc	1543 Lilburn-Stone Mountain Rd; Stone Mountain, GA 30087	Luanne Schroeder	770-469-6226	\$57,767
Advantage Behavioral Health	250 North Avenue Athens, GA 30601-2244	Terry Tellefson	(706) 542-9739	\$184,586
Community Friendship, Inc.	85 Renaissance Parkway NE; Atlanta, GA 30308	Jean Toole	(404) 875-0381	\$276,768
Georgia Pines CSB	1102 Smith Avenue, Suite K; Thomasville, GA 31792-1659	Robert Jones	(229) 225-4370	\$311,879
Clayton County CSB	112 Broad Street; Jonesboro, GA 30236-1919	Jade Benefield	(770) 478-2280	\$33,790
Chris Kids, Inc	3111 Clairmont Rd, Suite B; Atlanta, GA 30329	Katherine Colbenson	404-486-9034	\$53,150
Ben Hil BOH	-	-	-	\$4,762

Agency Name	Address	Agency Director	Phone Number	Mental Health Block Grant
Behavioral Health Services of South Georgia	3120 N. Oak Street Extension Suite C; Valdosta, GA 31602-1007	Sue Gupton	(229) 333-7095	\$125,516
Avita Community Partners	4331 Thurmond Tanner Road; Flowery Branch, Georgia 30542	Laura Tyler	(770) 535-5403	\$423,119
American Work	1124 Dawson Road; Albany, GA 31707	Marie Watson	888 672-3917	\$82,339
Albany Area CSB	P.O. Box 1988; Albany, GA 31702-1988	Faye Holt	(229) 430-4042	\$219,833
Albany ARC	-	-	-	\$90,950
Compeer Atlanta/ Geo. West MH Foundation	1903 North Druid Hills Road; Atlanta, GA 30319	Beth Finnerty	(404) 378-8312	\$46,553
Oconee CSB	P.O. Box 1827; Milledgeville, GA 31059-1827	Angela Hicks-Hill	(478) 445-4817	\$57,734
Regional Reserves	-	-	-	\$76,202
Worktec	221 Stockbridge Road; Jonesboro, GA 30236	Dorothy Cochran	(770) 473-2840	\$525,118
Twin Cedars	-	-	-	\$39,514
Savannah Area Behavioral health Collaborative	-	-	-	\$24,790
Satilla CSB	P.O. Box 1397; Waycross, GA 31502-1397	Dennis Wool, Ph.D.	(912) 284-2543	\$232,937
River Edge Behavioral Health Center	175 Emery Highway; Macon, GA 31217-3692	Frank Fields	(478) 751-4515	\$150,632
Pineland CSB	P.O. Box 745; Statesboro, GA 30459-0745	June DiPolito	(912) 764-6906	\$276,460
Phoenix Center CSB	P.O. Box 2866; Warner Robins, GA 31099-2866	Don Blair	(478) 322-4058	\$18,448
GA Parent Support Network	1381 Metropolitan Parkway; Atlanta, GA 30310	Anna McLaughlin	404-758-4500	\$76,491
Ogeechee CSB	P.O. Box 1259; Swainsboro, GA 30401-1259	J. Frank Brantley	(478) 289-2522	\$72,047
Gateway Center for Human Development	1000 Commissioners Drive; Darien, GA 31305	Frank Bonati	(912) 267-0760	\$547,677
Northside Hospital	1000 Johnson Ferry RD; Atlanta, GA	Sue McKellar	(404) 851-8053	\$84,788
NEW HORIZONS	P.O. Box 5328; Columbus, GA 31906-0328	Perry Alexander	(706) 596-5583	\$131,853

Agency Name	Address	Agency Director	Phone Number	Mental Health Block Grant
Middle Flint Behavioral Healthcare	P.O. Drawer 1348; Americus, GA 31709-1348	Pam Davis	(229) 931-2470	\$159,763
McIntosh Trail CSB	1501-A Kalamazoo Drive ; Griffin, GA 30224	Cathy Johnson	(770) 358-5252	\$152,233
Lookout Mountain CSB	P.O. Box 1027; LaFayette, GA 30728-1027	Tom Ford, Ph.D.	(706) 638-5584	\$173,574
Highland Rivers CSB	1710 White House Drive, Suite 204; Dalton, Georgia 30720	Klay Weaver	(706) 270-5000	\$394,742
Haralson County Center forMH/DD/AD	217 Tennesse Avenue; Bremen, GA 30110-2153	Richard Haliburton	(770) 537-2367	\$20,855
Gwinnett/ Rockdale/ Newton CSB	P.O. Box 687; Lawrenceville, GA 30046-0687	Bobby Robbins	(770) 339-5019	\$179,442
Fee-for-Service	-	-	-	\$5,361,312
Pathways CSB	120 Gordon Commercial Drive, Suite A; LaGrange, GA 30240-5740	Joan Turner	(706) 845-4045	\$122,887

General Notes: Georgia, FY 2008

Table Number	General Notes
2A, 2B, 3, 4, 6, 12, 14A, 14B, 15, 16, 17	Ages are based on the consumer's age on the first date active during the SFY (a) with an active inpatient hospital episode or (b) with an active authorization for community services, as appropriate. Data for state hospital services is derived from inpatient hospital stays. Data for all other services is derived from authorizations for community services. Counts are unduplicated across hospital and community settings where such data is combined.
2A, 2B, 14A, 14B, 15, 16, 17	Race/Ethnicity: "More Than One Race" includes Multi-Racial; "Not Available" includes Other, Other Single Race, Unknown, and Not Reported. Hispanic/Latino Origin: "Not Available" includes Unknown and Not Reported.
3 & 6	Data for "State Psychiatric Hospitals" includes state hospital inpatient Adult Mental Health, Secure, and C&A Short-Term Mental Health programs. State hospital outpatients and non-admits are not included in any counts; however, hospital-operated community services are included in "Community (Mental Health) Programs." Data for "Other Psychiatric Inpatient" includes the community service, Community Based Inpatient. Data for "Residential Treatment Centers (for Children)" includes the community service, Outdoor Therapeutic Program. Data for "Community (Mental Health) Programs" includes any community service other than Community Based Inpatient or Outdoor Therapeutic Program.
4	Employment Status is collected at admission, at discharge, at re-authorization of services, and at addition of new services to an existing authorization. Employment Status reported is the latest available for the SFY and includes community consumers only. "Employed" includes Competitive Employment and Community Based Non-Competitive Employment. "Unemployed" includes Unemployed But Available for Work = Yes. "Not in Labor Force" includes Unemployed But Available for Work = No and Facility Based Non-Competitive Employment. "Not Available" includes Not Available and Not Reported.
5A & 5B	"Non-Medicaid Sources (only)" includes consumers served only in state hospitals.
6	Age for state hospital services: Ages are reported using the consumer's age at the first date during the SFY with an active inpatient hospital episode. Ages for all other services: For "Total Served at Beginning of Year," ages are reported for age at 7/1/2007. For "Admissions During the year," ages are reported using the age at the time of "admission."
12	Percent of adults meeting the federal definition of SMI is calculated by dividing total number of SMI consumers who are 18 years of age or older (URS Table 14A) by the total number 18 and older consumers served by the SMHA (URS Table 2A). Percent of adults meeting the federal definition of SED is calculated by dividing the total number of SED consumers who are under 18 (URS Table 14A) by the total number of consumers under 18 served by the SMHA (URS Table 2A).
12, 14A, 14B, 16, 17	Consumers whose authorization request type is "Registration" receive authorization for a bundle of core services. These authorization requests do not include a specific DSM diagnosis; therefore, consumers whose only request type is "Registration" cannot be designated as SMI or SED, yielding reported counts and percentages of SMI/SED consumers that are artificially low.
15	Living Situation is collected at admission, at discharge, at re-authorization of services, and at addition of new services to an existing authorization. Data reported is the latest available for the SFY and includes community consumers only. "Residential Care" includes living situations "Residential" and "PRTF" where the consumer's age was 18 and older, and "Children's Residential Treatment" includes living situations "Residential" and "PRTF" where the consumer's age was under 18. "Crisis Residence" is not included among the options for "living situation" in Georgia's information system. "NA" includes living situation "Not Reported."
16	Therapeutic Foster Care was discontinued in FY08. Family Functional Therapy includes the service, Intensive Family Intervention. Total unduplicated number of Adults with SMI served and Total unduplicated number of Children with SED counts include community consumers only.
17	Illness Self Management includes the services, Peer Support and Psychosocial Rehabilitation.