



VT Mental Health National Outcome Measures (NOMS): CMHS Uniform Reporting System:



URS Year 6 Reporting

Utilization Rates/Number of Consumers Served	US FY 2007	VT	U.S. Rate	States
Penetration Rate per 1,000 population	6,121,641	33.35	20.14	58
Community Utilization per 1,000 population	5,553,938	33.12	19.01	55
State Hospital Utilization per 1,000 population	175,583	0.37	0.60	52
Other Psychiatric Inpatient Utilization per 1,000	358,295	0.48	1.43	40

Adult Employment Status	US FY 2007	VT	U.S. Rate	States
Employment Status (percent in Labor Force)	664,394	44%	39%	55
Employment Status (percent with Employment Data)	664,394	32%	21%	55

Adult Consumer Survey measures	US FY 2007	VT	U.S. Rate	States
Positive About Outcomes	-	67%	71%	55

Child/Family Consumer Survey measures	US FY 2007	VT	U.S. Rate	States
Positive About Outcomes	-	57%	65%	51

Readmission Rates: (Civil "non-Forensic" clients)	US FY 2007	VT	U.S. Rate	States
State Hospital Readmissions: 30 Days	15,008	24.0%	9.4%	49
State Hospital Readmissions: 180 Days	31,741	35.1%	19.9%	48
State Hospital Readmissions: 30 Days: Adults	12,945	24.0%	9.8%	48
State Hospital Readmissions: 180 Days: Adults	26,953	35.1%	20.3%	47
State Hospital Readmissions: 30 Days: Children	981		6.7%	38
State Hospital Readmissions: 180 Days: Children	2,249		15.3%	42

Living Situation	US FY 2007	VT	U.S. Rate	States
Living Situation: Private Residence	3,617,109	84.7%	80.1%	54
Living Situation: Homeless/Shelter	133,838	1.4%	3.0%	51
Living Situation: Jails/Prisons	98,813	0.1%	2.2%	51

Implementation of Evidence-Based Practices	US FY 2007	VT	U.S. Rate	States
Supported Housing	82,230	77.2%	5%	32
Supported Employment	45,279	25.8%	2%	37
Assertive Community Treatment	57,054	9.8%	3%	37
Family PsychoEducation	14,875	8.85%	2%	14
Dual Diagnosis Treatment	38,673	34.77%	4%	22
Illness Self Management	118,413	7.40%	15%	18
Medications Management	194,637		29%	14

Child/Adolescent EBP Services	US FY 2007	VT	U.S. Rate	States
Therapeutic Foster Care	12,462	1.2%	3%	27
Multi Systemic Therapy	4,680		1%	16
Functional Family Therapy	6,204		4%	10

Change in Social Connectedness	US FY 2007	VT	U.S. Rate	States
Adult Improved Social Connectedness		65%	72%	45
Child/Family Improved Social Connectedness	-		84%	36



STATE MENTAL HEALTH MEASURES: CMHS Uniform Reporting System Measures



STATE: Vermont

URS Year 6 Reporting

Basic Measures	State Number	Rate	U.S. FY 2007	Rate	States
Indicator 1: Penetration Rate per 1,000 population	20,806	33.35	6,121,641	20.14	58
Indicator 2: Community Utilization per 1,000 population	20,663	33.12	5,553,938	19.01	55
Indicator 3: State Hospital Utilization per 1,000 population	231	0.37	175,583	0.60	52
Indicator 4: Medicaid Funding Status	12,330	66%	2,860,234	57%	46
Indicator 5: Employment Status (percent employed)	2,920	32%	664,394	21%	55
Indicator 6: State Hospital Adult Admissions	242	1.05	155,892	1.00	50
Indicator 7: Community Adult Admissions	4,499	0.38	2,288,918	0.63	48
Indicator 8: State Hospital LOS Discharged Adult Patients	-	20 days	-	49 days	49
Indicator 9: State Hospital LOS Resident Adult Patients	-	40 days	-	83 days	49
Indicator 10: Percent of Client who meet SMI definition	-	28%	-	69%	57
Indicator 11: Adults with Co-occurring MH/SA Disorders	-	20%	-	24%	43
Indicator 12: Children with Co-occurring MH/SA Disorders	-	5%	-	6%	43
Basic Measure: Adult Consumer Survey measures	State Number	Rate	U.S. FY 2007	Rate	States
Indicator 13: Positive About Access	-	76%	-	85%	54
Indicator 14: Positive About Quality and Appropriateness	-	81%	-	86%	54
Indicator 15: Positive About Outcomes	-	67%	-	71%	55
Indicator 16: Positive on Participation in Treatment Planning	-	71%	-	82%	54
Indicator 17: Positive General Satisfaction with Services	-	81%	-	87%	55
Basic Measure: Child/Family Consumer Survey measures	State Number	Rate	U.S. FY 2007	Rate	States
Indicator 18: Positive About Access	-	80%	-	85%	50
Indicator 19: Positive about General Satisfaction	-	77%	-	84%	51
Indicator 20: Positive About Outcomes	-	57%	-	65%	51
Indicator 21: Positive on Participation in Treatment Planning	-	74%	-	87%	51
Indicator 22: Positive Cultural Sensitivity of Providers	-	29%	-	93%	50
Basic Measure: Consumer Living Situations	State Number	Rate	U.S. FY 2007	Rate	States
Indicator 23: Private Residence	14,419	85%	3,617,109	80%	54
Indicator 24: Jail/Correctional Facility	25	0%	98,813	2%	51
Indicator 25: Homeless or Shelter	233	1%	133,844	3%	51
Basic Measure: Hospital Readmissions	State Number	Rate	U.S. FY 2007	Rate	States
Indicator 26: State Hospital Readmissions: 30 Days	41	24%	15,008	9%	49
Indicator 27: State Hospital Readmissions: 180 Days	60	35%	31,741	20%	48
Indicator 28: Readmission to any psychiatric hospital: 30 Days	22	12%	37,362	14%	28
Basic Measure: State Mental Health Finance	State Number	Rate	U.S. FY 2007	Rate	States
Indicator 29: SMHA Expenditures for Community MH	\$90,600,000	83%	\$20,673,112,328	70%	51
Indicator 30: SMHA Revenues from State Sources	\$29,200,000	28%	\$13,400,813,293	46%	51
Indicator 31: Total SMHA Expenditures	\$109,000,000		\$29,397,421,631		51
Developmental Measures	State Number	Rate	US FY 2007	Rate	States
Dev 1: Percent Adults with SMI and Children with SED	8,712	42%	4,030,266	66%	57
Developmental Measure: Adult Evidence Based Practices	State Number	Rate	U.S. FY 2007	Rate	States
Dev 2: Assertive Community Treatment	304	9.8%	57,054	2.7%	49
Dev 3: Supported Housing	2,400	77.2%	82,230	5.4%	32
Dev 4: Supported Employment	803	25.8%	45,279	2.5%	37
Dev 5: Family Psychoeducation	275	8.8%	15,031	1.8%	14
Dev 6: Integrated Dual Diagnosis Treatment (MH/SA)	1,081	34.8%	38,673	4.2%	22
Dev 7: Illness Self-Management and Recovery	230	7.4%	119,006	15.4%	18
Dev 8: Medications Management	-	-	196,816	29.2%	14
Developmental Measure: Child Evidence Based Practices	State Number	Rate	U.S. FY 2007	Rate	States
Dev 9: Therapeutic Foster Care	64	1.2%	12,462	2.6%	27
Dev 10: Multisystemic Therapy	-	-	4,680	1.4%	16
Dev 11: Functional Family Therapy	-	-	6,204	3.8%	10
Developmental Measure: Use of New Generation Medications	State Number	Rate	U.S. FY 2007	Rate	States
Dev 12: New Generation Meds: State Hospitals	88	74.6%	32,589	72.9%	32
Dev 13: New Generation Meds: Community MH	447	38.8%	139,641	51.5%	26
Dev 14: New Generation Meds: Total System	512	42.8%	111,421	50.3%	19
Developmental Measure: Outcome	State Number	Rate	U.S. FY 2007	Rate	States
Dev 15: Adult Criminal Justice Contacts	197	6.4%	29,045	7.0%	39
Dev 16: Juvenile Justice Contacts	740	8.7%	4,262	6.1%	36
Dev 17: School Attendance (Improved)	73	33.0%	6,919	34.2%	31

Mental Health Community Services Block Grant: CMHS Uniform Reporting System: 2007 State Report



Vermont

State URS Contact Person

John Pandiani
108 Cherry Street, Burlington, VT 05401
Phone: 802-863-7249
Email: jpandiani@vdh.state.vt.us

FY 2005 Mental Health Block Grant Expenditures	\$800,000
FY 2005 SMHA Community MH Expenditures	\$90,600,000
FY 2005 Per Capita Community MH Expenditures	\$145.83
FY 2005 Community Percent of Total SMHA Spending	83%
FY 2005 Total SMHA Mental Health Expenditures	\$109,000,000
FY 2005 Per Capita Total SMHA Mental Health Expenditures	\$175.45

Statewide Mental Health Agency Data*

20,806 Total Clients Served by SMHA System	33.35	Total Utilization rate per 1,000 population
20,663 Clients Served in Community Settings	33.12	Community Utilization rate per 1,000 population
231 Clients Served in State Hospitals	0.37	Hospital Utilization rate per 1,000 population

Gender

51% Female
49% Male

Age

23.6% Age 0 to 12
19.4% Age 13-17
5.7% Age 18 to 20
45.0% Age 21 to 64
3.1% Age 65 to 74
3.0% Age 75 and over
0.1% Age Not Available

Race/Ethnicity:

0.8% American Indian/Alaskan Native
0.5% Asian
1.3% Black or African American
- Native Hawaiian/Pacific Islander
86.8% White
- Multi-Racial
1.5% Hispanic or Latino
10.5% Race not available

Living Situation (with known status)

84.7% Private Residence
4.2% Foster Home
4.8% Residential Care
- Crisis Residence
0.4% Children's Residential Treatment
1.7% Institutional Setting
0.1% Jail/Correctional Facility
1.4% Homeless or Shelter
2.6% Other Living Situation
- Living Situation Not Available

Employment Adult With Known Status:

32% Percent Employed
26% Percent Not In Labor Force
41% Percent Unemployed

Medicaid Funding Status of Consumers

34% Medicaid Only
34% SMHA Funds Only (Non-Medicaid)
32.2% Both Medicaid and Other Funds

Consumer Perception of Care: (Children/Adolescents)

80% Access to Services
77% Quality/Appropriateness of Services
57% Outcomes from Services
74% Participation in Treatment Planning
29% Cultural Sensitivity of Providers

Consumer Perception of Care: (Adults):

76% Access to Services
81% Quality/Appropriateness of Services
67% Outcomes from Services
71% Participation in Treatment Planning
81% Overall Satisfaction with Care

Outcome Measures Developmental

6.4% Adults Arrested this Year

8.7% Youth Arrested this year
33.0% Improved School Attendance

Implementation of Evidence-Based Practices

9.8% Assertive Community Treatment
77.2% Supported Housing
25.8% Supported Employment
8.85% Family Psychoeducation
34.8% Integrated Dual Diagnosis Treatment (MH/SA)
7.4% Illness Self-Management and Recovery
- Medications Management
1.2% Therapeutic Foster Care
- MultiSystemic Therapy
- Family Functional Therapy

State Hospital Readmissions (Civil Status Patients)

24% State Hospital Readmissions: 30 Days
35% State Hospital Readmissions: 180 Days
12% Readmission to any psychiatric hospital: 30 Days

* Based on 2007 URS data provided by US States and Territories per annual reporting guidelines.



The Community Mental Health Block Grant is administered by the Center for Mental Health Services within the Substance Abuse and Mental Health Services Administration of the US Department of Health and Human Services



STATE MENTAL HEALTH INDICATORS BY REGION: CMHS Uniform Reporting System: URS Year 6

Basic Measures	North	South	Midwest	West	SouthWest	Rate	States Responding
Indicator 1: Penetration Rate (per 1000 population)	26.40	20.14	19.52	19.15	16.15	20.14	58
Indicator 2: Community Utilization (per 1000 population)	25.41	19.42	16.77	18.06	15.56	19.01	55
Indicator 3: State Hospital Utilization (per 1000 population)	0.46	0.90	0.56	0.31	0.68	0.60	52
Indicator 4: Medicaid Funding Status of Clients Served	58.2%	54.8%	61.1%	63.3%	50.0%	57.3%	46
Indicator 5: Employment Status (% employed)	23%	19%	24%	12%	25%	83%	55
Indicator 6: State Hospital Admission Rate	16.79	11.34	13.46	21.49	9.16	1.01	50
Indicator 7: Community Admission Rate	0.01	0.02	0.00	0.02	0.02	0.65	48
Indicator 8: State Hospital Median LOS Discharged Adults	49	21	28	76	20	49.0	49
Indicator 9: State Hospital Median LOS Resident Adults	65	39	49.5	98	49	964	49
Indicator 10: Percent of Client who meet SMI definition	60%	73%	76%	86%	62%	69.1%	57
Indicator 11: Adults with Co-occurring MH/SA Disorders	26%	17%	21%	23%	24%	23.8%	43
Indicator 12: Children with Co-occurring MH/SA Disorders	5%	4%	8%	15%	4%	6.3%	43

Adult Consumer Survey Measures	North	South	Midwest	West	SouthWest	Rate	States Responding
Indicator 13: Positive About Access	85%	86%	80%	85%	82%	85%	54
Indicator 14: Positive About Quality and Appropriateness	88%	88%	84%	86%	83%	86%	54
Indicator 15: Positive About Outcomes	78%	71%	68%	70%	69%	71%	55
Indicator 16: Positive on Participation in Treatment Planning	83%	80%	78%	86%	76%	82%	54
Indicator 17: Positive General Satisfaction with Services	87%	88%	82%	88%	86%	87%	55

Child/Family Consumer Survey Measures	North	South	Midwest	West	SouthWest	Rate	States Responding
Indicator 18: Positive About Access	82%	85%	84%	85%	81%	85%	50
Indicator 19: Positive About General Satisfaction	78%	85%	81%	85%	81%	84%	51
Indicator 20: Positive About Outcomes	65%	67%	83%	64%	71%	65%	51
Indicator 21: Positive on Participation in Treatment Planning	82%	87%	88%	88%	87%	87%	51
Indicator 22: Positive Cultural Sensitivity of Providers	79%	92%	92%	95%	91%	93%	50

Consumer Living Situations	North	South	Midwest	West	SouthWest	Rate	States Responding
Indicator 23: Living Situation: Private Residence	75%	82%	83%	79%	85%	80.1%	54
Indicator 24: Living Situation: Jails/Prisons	3.4%	1.4%	0.9%	3.9%	1.6%	2.2%	51
Indicator 25: Homeless Status of Clients	3.5%	2.1%	2.5%	4.6%	2.8%	3.0%	51

Hospital Readmissions	North	South	Midwest	West	SouthWest	Rate	States Responding
Indicator 26: State Hospital readmissions: 30 Days	8.1%	9.5%	12.6%	6.0%	7.5%	9.4%	49
Indicator 27: State Hospital readmissions: 180 Days	18.4%	22.6%	18.3%	13.4%	17.9%	19.9%	48
Indicator 28: Readmission to any psychiatric hospital: 30 Days	18.7%	6.5%	11.4%	8.8%	10.3%	14.2%	28

Mental Health Finance	North	South	Midwest	West	SouthWest	Rate	States Responding
Indicator 29: Percent of SMHA Expenditures for Community MH	71%	57%	71%	79%	71%	70%	51
Indicator 30: Percent of SMHA Revenues from State Sources	52%	49%	45%	36%	45%	46%	51

Regional groupings of States based on SAMHSA's Block Grant Regions.

ACCESS DOMAIN: TABLE 1: Demographic Characteristics of Persons Served by the State Mental Health Authority, FY 2007

STATE: Vermont

Age	Total Served: State N	Total Served: State %	Total Served: U.S. N	Total Served: U.S. N	Penetration Rates (rate per 1,000 population): State	Penetration Rate (rate per 1,000 population): Northeast	Penetration Rates (rate per 1,000 population): U.S.	States Reporting
0 to 12	4,903	23.6%	883,202	14.4%	54.6	20.1	16.9	58
13 to 17	4,042	19.4%	807,963	13.2%	92.8	45.1	37.7	58
18 to 20	1,196	5.7%	273,626	4.5%	41.5	25.8	21.8	58
21 to 64	9,367	45.0%	3,866,031	63.2%	24.7	28.7	22.0	58
65 to 74	649	3.1%	169,368	2.8%	15.2	15.7	9.0	58
75 and over	630	3.0%	111,912	1.8%	15.6	11.6	6.1	57
Not Available	19	0.1%	9,539	0.2%				31
TOTAL	20,806	100%	6,121,641	100%	33.3	26.4	20.1	58

Gender	Total Served: State N	Total Served: State %	Total Served: U.S. N	Total Served: U.S. N	Penetration Rates (rate per 1,000 population): State	Penetration Rate (rate per 1,000 population): Northeast	Penetration Rates (rate per 1,000 population): U.S.	States Reporting
Female	10,581	50.9%	3,134,214	51.2%	33.4	25.9	20.3	58
Male	10,204	49.0%	2,947,828	48.2%	33.2	26.1	19.7	58
Not Available	21	0.1%	39,599	0.6%	-			38
TOTAL	20,806	100%	6,121,641	100%	33.3	26.4	20.1	58

Race/Ethnicity	Total Served: State N	Total Served: State %	Total Served: U.S. N	Total Served: U.S. N	Penetration Rates (rate per 1,000 population): State	Penetration Rate (rate per 1,000 population): Northeast	Penetration Rates (rate per 1,000 population): U.S.	States Reporting
American Indian/Alaskan Native	171	0.8%	72,878	1.2%	71.7	34.8	25.1	53
Asian	102	0.5%	80,296	1.3%	14.9	6.0	6.1	56
Black/African American	271	1.3%	1,228,744	20.1%	62.6	41.7	32.0	56
Native Hawaiian/Pacific Islander	-	-	12,662	0.2%		28.1	25.9	50
White	18,070	86.8%	3,794,159	62.0%	29.9	19.4	15.8	57
Hispanic	*	*	215,485	3.5%	*	26.8	13.7	11
Multi-Racial	-	-	95,116	1.6%		27.8	22.4	46
Not Available	2,192	10.5%	622,301	10.2%				34
TOTAL	20,806	100%	6,121,641	100%	33.3	26.4	20.1	58

Hispanic Origin	Total Served: State N	Total Served: State %	Total Served: U.S. N	Total Served: U.S. N	Penetration Rates (rate per 1,000 population): State	Penetration Rate (rate per 1,000 population): Northeast	Penetration Rates (rate per 1,000 population): U.S.	States Reporting
Hispanic or Latino	309	1.5%	519,995	9.7%	43.3	35.6	17.0	48
Not Hispanic or Latino	15,153	72.8%	4,116,658	77.1%	24.6	22.0	18.7	51
Hispanic Status Unknown	5,342	25.7%	702,945	13.2%				53
TOTAL	20,804	100%	5,339,598	100%	33.3	26.4	20.3	53

Are Client Counts Unduplicated? Unduplicated

Number States w/ Unduplicated Counts

47

Note:

This table uses data from URS/DIG Table 2a, Table 2b and from the US Census Bureau.

All denominators use US Census data from 2006.

US totals are calculated uniquely for each data element based on only those states who reported numerator (clients served) data.

Regional groupings of States based on SAMHSA's Block Grant Regions.

* Reported under Hispanic Origin

State Notes:

2A: Age None

Gender None

Race: In Vermont, a single race code is used for Asian/Native Hawaiian/Pacific Islander. Typically these clients are of Asian origin.

Overall: Unduplicated counts are based on Probabilistic Population Estimation (PPE) on a client file that includes all CMH clients and VT State Hospital caseloads for FY2007. Summing statistical estimates rounded to whole numbers results in small discrepancies

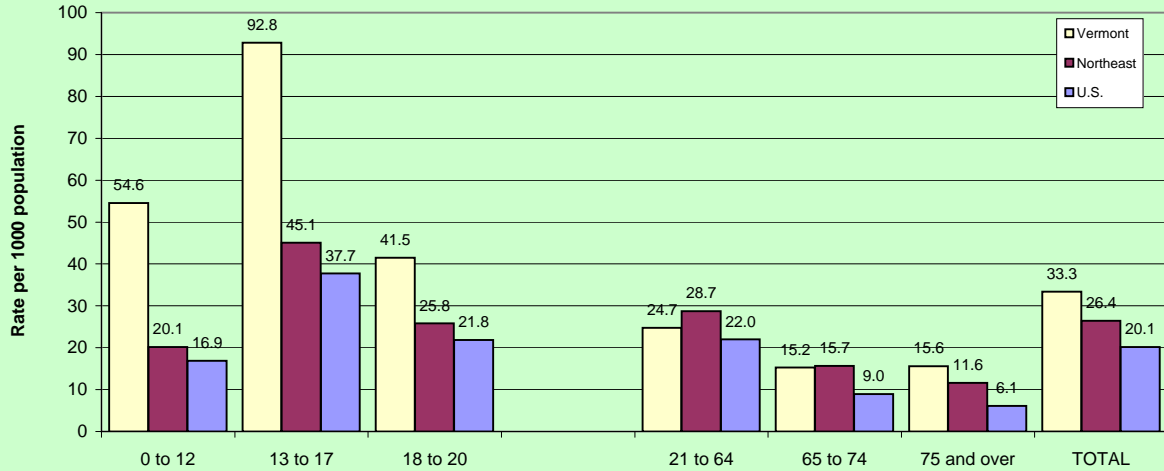
2B: Age None

Gender None

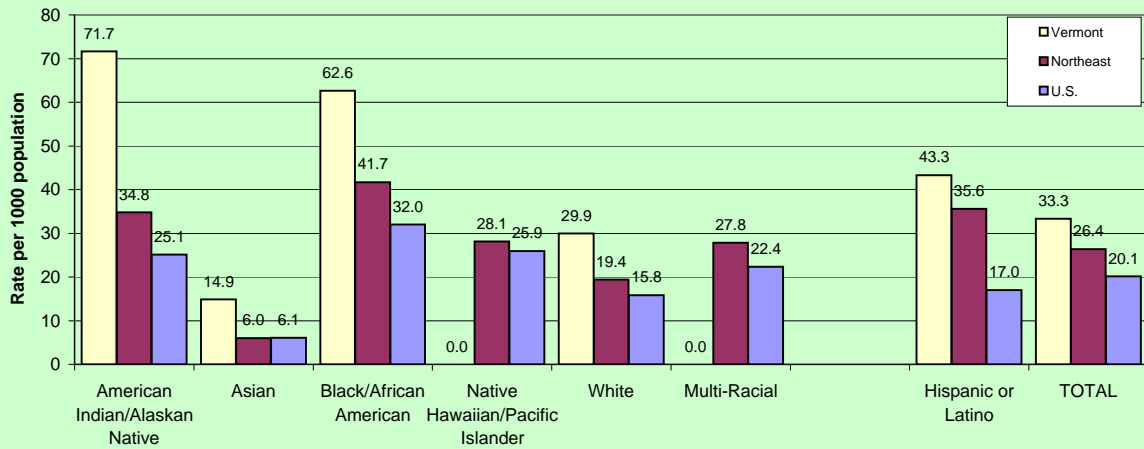
Race: In Vermont, a single race code is used for Asian/Native Hawaiian/Pacific Islander. Typically these clients are of Asian origin.

Overall: Unduplicated counts are based on Probabilistic Population Estimation (PPE) on a client file that includes all CMH clients and VT State Hospital caseloads for FY2007. Summing statistical estimates rounded to whole numbers results in small discrepancies.

**Rate of Mental Health Service Utilization By Age (data from Access Domain: Table1):
URS Year 6: Rate per 1000 population**



Rate of Mental Health Service Utilization By Race & Ethnicity: (data from Access Domain: Table 1) URS Year 6: Rate per 1000 population



ACCESS DOMAIN: TABLE 2: Persons Served in Community Mental Health Programs by Age and Gender, FY 2007

STATE: Vermont

Age	Served in Community: State N	Served in Community: State %	Served in Community: U.S. N	Served in Community: U.S. %	Penetration Rate per 1,000 population: State	Penetration Rate per 1,000 population: U.S.	States Reporting
0 to 17	8,947	43%	1,510,592	27%	67.1	21.3	54
18 to 20	1,190	6%	249,091	4%	41.3	20.6	55
21 to 64	9,237	45%	3,530,571	64%	24.4	20.9	55
65 and Over	1,270	6%	254,866	5%	15.3	7.1	55
Not Available	19	0%	8,818	0%			27
TOTAL	20,663	100%	5,553,938	100%	33.1	19.0	55

Gender	Served in Community: State N	Served in Community: State %	Served in Community: U.S. N	Served in Community: U.S. %	Penetration Rate per 1,000 population: State	Penetration Rate per 1,000 population: U.S.	States Reporting
Female	10,540	51%	2,843,031	51%	33.3	19.2	55
Male	10,102	49%	2,676,064	48%	32.9	18.6	55
Not Available	21	0%	34,843	1%			35
TOTAL	20,663	100%	5,553,938	100%	33.1	19.0	55

Note:

US totals are based on states reporting.

This table uses data from URS/DIG Table 3.

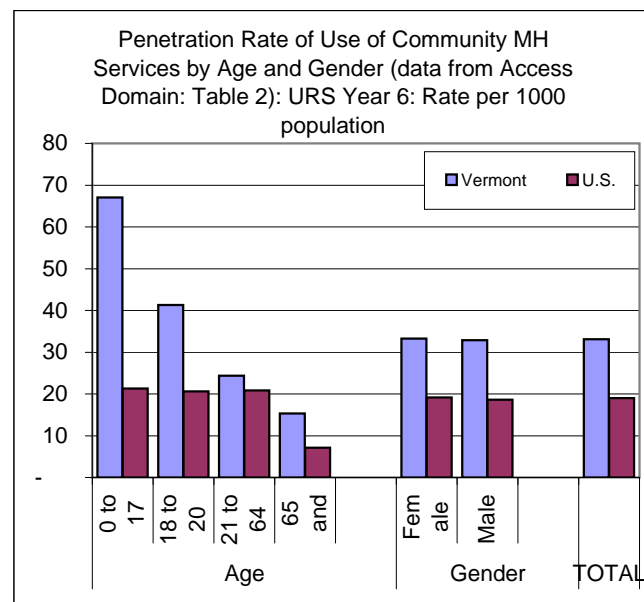
US totals are calculated uniquely for each data element based on only those states who reported numerator (clients served) data.

State Notes:

Gender: None

Age: None

Overall: Unduplicated counts are based on Probabilistic Population Estimation (PPE) on a client file that includes all CMH clients for FY2007. Summing statistical estimates rounded to whole numbers results in small discrepancies.



2007 CMHS Uniform Reporting System Output Table

ACCESS DOMAIN: TABLE 3: Persons Served in State Psychiatric Hospitals by Age and Gender, FY 2007

STATE: Vermont

Age	Served in State Psychiatric Hospitals: State N	Served in State Psychiatric Hospitals: State %	Served in State Psychiatric Hospitals: U.S. N	Served in State Psychiatric Hospitals: U.S. %	Penetration rate per 1,000 population: State	Penetration rate per 1,000 population: U.S.	States Reporting
0 to 17	1	0%	15,785	9%	0.01	0.24	44
18 to 20	9	4%	8,664	5%	0.31	0.72	51
21 to 64	207	90%	143,502	82%	0.55	0.85	52
65 and Over	14	6%	7,622	4%	0.17	0.21	51
Not Available	-	-	10	0%			8
TOTAL	231	100%	175,583	100%	0.37	0.61	52

Gender	Served in State Psychiatric Hospitals: State N	Served in State Psychiatric Hospitals: State %	Served in State Psychiatric Hospitals: U.S. N	Served in State Psychiatric Hospitals: U.S. %	Penetration rate per 1,000 population: State	Penetration rate per 1,000 population: U.S.	States Reporting
Female	76	33%	64,076	36%	0.24	0.43	52
Male	155	67%	111,180	63%	0.50	0.77	52
Not Available	-	-	327	0%			15
TOTAL	231	100%	175,583	100%	0.37	0.60	52

Note:

US totals are based on states reporting.

This table uses data from URS/DIG Table 3.

US totals are calculated uniquely for each data element based on only those states who reported numerator (clients served) data.

State Notes:

Gender: None

Age: None

Overall: Unduplicated counts are based on Probabilistic Population Estimation (PPE) on a client file that includes all CMH clients for FY2007. Summing statistical estimates rounded to whole numbers results in small discrepancies.

ACCESS DOMAIN: TABLE 4: Persons Served by SMHA System through Medicaid and Other Funding Sources by Race and Gender, FY 2007

STATE: Vermont

Race/Ethnicity	Medicaid Only: State N	Non-Medicaid Only: State N	Both Medicaid & Other: State N	Total Served with Known Funding Status: State N	Medicaid Only: State %	Non-Medicaid Only: State %	Both Medicaid & Other: State %	Medicaid Only: U.S. N	Non-Medicaid Only: U.S. N	Both Medicaid & Other: U.S. N	Total Served with Known Funding Status: U.S. N	Medicaid Only: U.S. %	Non-Medicaid Only: U.S. %	Both Medicaid & Other: U.S. %	States Reporting
American Indian/Alaskan Native	66	37	53	156	42%	24%	34%	31,885	26,636	9,435	67,956	47%	39%	14%	42
Asian	31	29	28	88	35%	33%	32%	22,386	26,432	19,533	68,351	33%	39%	29%	44
Black/African American	94	51	95	240	39%	21%	40%	452,453	345,373	164,903	962,729	47%	36%	17%	43
Native Hawaiian/Pacific Islander	-	-	-	-	-	-	-	2,331	5,422	3,169	10,922	21%	50%	29%	36
White	5,745	5,229	5,036	16,010	36%	33%	31%	1,089,010	1,387,493	583,712	3,060,215	36%	45%	19%	45
Hispanic	*	*	*	*	*	*	*	64,554	85,429	56,959	206,942	31%	41%	28%	9
Multi-Racial	-	-	-	-	-	-	-	29,874	31,425	25,042	86,341	35%	36%	29%	34
Not Available	400	955	782	2,137	19%	45%	37%	221,285	220,125	83,703	525,113	42%	42%	16%	43
TOTAL	6,336	6,301	5,994	18,631	34%	34%	32%	1,913,778	2,128,335	946,456	4,988,569	38%	43%	19%	46

Hispanic Origin	Medicaid Only: State N	Non-Medicaid Only: State N	Both Medicaid & Other: State N	Total Served with Known Funding Status: State N	Medicaid Only: State %	Non-Medicaid Only: State %	Both Medicaid & Other: State %	Medicaid Only: U.S. N	Non-Medicaid Only: U.S. N	Both Medicaid & Other: U.S. N	Total Served with Known Funding Status: U.S. N	Medicaid Only: U.S. %	Non-Medicaid Only: U.S. %	Both Medicaid & Other: U.S. %	States Reporting
Hispanic or Latino	108	67	97	272	40%	25%	36%	170,049	184,832	101,899	456,780	37%	40%	22%	37
Not Hispanic or Latino	5,104	4,296	3,738	13,138	39%	33%	28%	1,262,437	1,453,183	513,690	3,229,310	39%	45%	16%	37
Not Available	1,124	1,938	2,159	5,221	22%	37%	41%	253,260	132,454	29,452	415,166	61%	32%	7%	33
TOTAL	6,336	6,301	5,994	18,631	34%	34%	32%	1,685,746	1,770,469	645,041	4,101,256	41%	43%	16%	40

Gender	Medicaid Only: State N	Non-Medicaid Only: State N	Both Medicaid & Other: State N	Total Served with Known Funding Status: State N	Medicaid Only: State %	Non-Medicaid Only: State %	Both Medicaid & Other: State %	Medicaid Only: U.S. N	Non-Medicaid Only: U.S. N	Both Medicaid & Other: U.S. N	Total Served with Known Funding Status: U.S. N	Medicaid Only: U.S. %	Non-Medicaid Only: U.S. %	Both Medicaid & Other: U.S. %	States Reporting
Female	3,217	3,203	3,078	9,498	34%	34%	32%	1,017,126	1,043,465	495,413	2,556,004	40%	41%	19%	45
Male	3,115	3,085	2,912	9,112	34%	34%	32%	886,734	1,067,399	448,817	2,402,950	37%	44%	19%	45
Not Available	4	13	4	21	19%	62%	19%	9,918	17,471	2,226	29,615	33%	59%	8%	27
TOTAL	6,336	6,301	5,994	18,631	34%	34%	32%	1,913,778	2,128,335	946,456	4,988,569	38%	43%	19%	46

* Reported under Hispanic Origin

Note:

This table uses data from DIG Tables 5a, and 5b (Hispanic Origin).

Duplication

Type of Medicaid Data Reported

Data based on Medicaid Paid Claims -

Data based on Medicaid Eligibility, not Claims Yes

State Notes

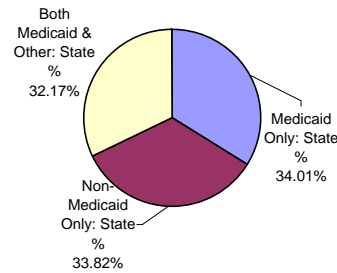
5a Age None

5a Gender None

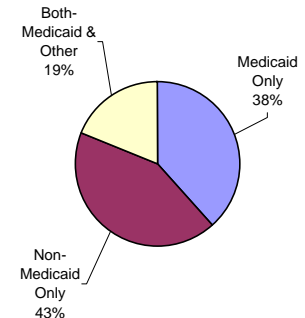
5a Overall Unduplicated counts are based on Probabilistic Population Estimation (PPE) on a client file that includes all CMH clients and VT State Hospital caseloads for FY2007. Summing statistical estimates rounded to whole numbers results in small discrepancies.

5b Overall Unduplicated counts are based on Probabilistic Population Estimation (PPE) on a client file that includes all CMH clients and VT State Hospital caseloads for FY2007. Summing statistical estimates rounded to whole numbers results in small discrepancies.

Persons Served by Medicaid Funding Status
(data from Access Domain Table4): URS Year 6: State



Persons Served by Medicaid Funding Status
(data from Access Domain Table4): URS Year 6: US



ACCESS DOMAIN: TABLE 5: Demographic Characteristics of Adults with SMI and Children with SED Served by the State Mental Health Authority, FY 2007**STATE: Vermont**

Age	Total Served with SMI/SED: State N	Total Served with SMI/SED: State %	Total Served with SMI/SED: U.S. N	Total Served with SMI/SED: U.S. %	Penetration rate per 1,000 population: State	Penetration rate per 1,000 population: Northeast	Penetration rate per 1,000 population: U.S.	States Reporting
0 to 12	2,865	32.9%	559,716	13.9%	31.9	20.1	10.7	57
13 to 17	2,593	29.8%	542,532	13.5%	59.6	27.4	25.3	57
18 to 20	44	0.5%	155,516	3.9%	1.5	12.6	12.4	56
21 to 64	2,894	33.2%	2,587,412	64.2%	7.6	16.5	14.7	57
65 to 74	236	2.7%	114,847	2.8%	5.5	8.7	6.1	57
75 and over	79	0.9%	65,801	1.6%	2.0	5.8	3.6	56
Not Available	1	0.0%	4,442	0.1%				26
TOTAL	8,712	100%	4,030,266	100%	14.0	15.2	13.3	57

Gender	Total Served with SMI/SED: State N	Total Served with SMI/SED: State %	Total Served with SMI/SED: U.S. N	Total Served with SMI/SED: U.S. %	Penetration rate per 1,000 population: State	Penetration rate per 1,000 population: Northeast	Penetration rate per 1,000 population: U.S.	States Reporting
Female	3,936	45.2%	2,056,178	51.0%	12.4	14.4	13.3	57
Male	4,775	54.8%	1,951,882	48.4%	15.6	15.7	13.0	57
Not Available	1	0.0%	22,206	0.6%				39
TOTAL	8,712	100%	4,030,266	100%	14.0	15.2	13.3	57

Race/Ethnicity	Total Served with SMI/SED: State N	Total Served with SMI/SED: State %	Total Served with SMI/SED: U.S. N	Total Served with SMI/SED: U.S. %	Penetration rate per 1,000 population: State	Penetration rate per 1,000 population: Northeast	Penetration rate per 1,000 population: U.S.	States Reporting
American Indian/Alaskan Native	74	0.8%	41,084	1.0%	31.0	16.7	14.1	53
Asian	45	0.5%	59,023	1.5%	6.6	3.6	4.5	56
Black/African American	139	1.6%	857,305	21.3%	32.1	25.8	22.4	55
Native Hawaiian/Pacific Islander	-	-	9,728	0.2%		20.4	20.0	48
White	7,685	88.2%	2,466,419	61.2%	12.7	11.0	10.3	57
Hispanic	*	*	149,441	3.7%	*	15.9	9.8	10
Multi-Racial	-	-	72,521	1.8%		21.9	17.3	45
Not Available	769	8.8%	374,745	9.3%	-			
TOTAL	8,712	100%	4,030,266	100%	14.0	15.2	13.3	57

Hispanic Origin	Total Served with SMI/SED: State N	Total Served with SMI/SED: State %	Total Served with SMI/SED: U.S. N	Total Served with SMI/SED: U.S. %	Penetration rate per 1,000 population: State	Penetration rate per 1,000 population: Northeast	Penetration rate per 1,000 population: U.S.	States Reporting
Hispanic or Latino	141	1.6%	326,513	9.9%	19.8	22.0	10.7	48
Not Hispanic or Latino	6,374	73.2%	2,672,294	81.2%	10.3	12.9	12.1	51
Hispanic Status Unknown	2,197	25.2%	290,932	8.8%				52
TOTAL	8,712	100%	3,289,739	100%	14.0	15.2	12.8	52

Note:

This table uses data from URS/DIG Table 14a, Table 14b and from the US Census Bureau.

All denominators use US Census data from 2006.

US totals are calculated uniquely for each data element based on only those states who reported numerator (clients served) data.

Regional groupings of States based on SAMHSA's Block Grant Regions.

* Reported under Hispanic Origin

State Used Federal SMI Definition? No**State Used Federal SED Definition?** Yes
All young people aged 0-17 with Axis5 of 60 or less.**State Notes:**

14a Age None

Gender None

Race In Vermont, a single race code is used for Asian/Native Hawaiian/Pacific Islander. Typically these clients are of Asian origin.

Overall Unduplicated counts are based on Probabilistic Population Estimation (PPE) on a client file that includes all CMH clients and VT State Hospital caseloads for FY2007. Summing statistical estimates rounded to whole numbers results in small discrepancies.

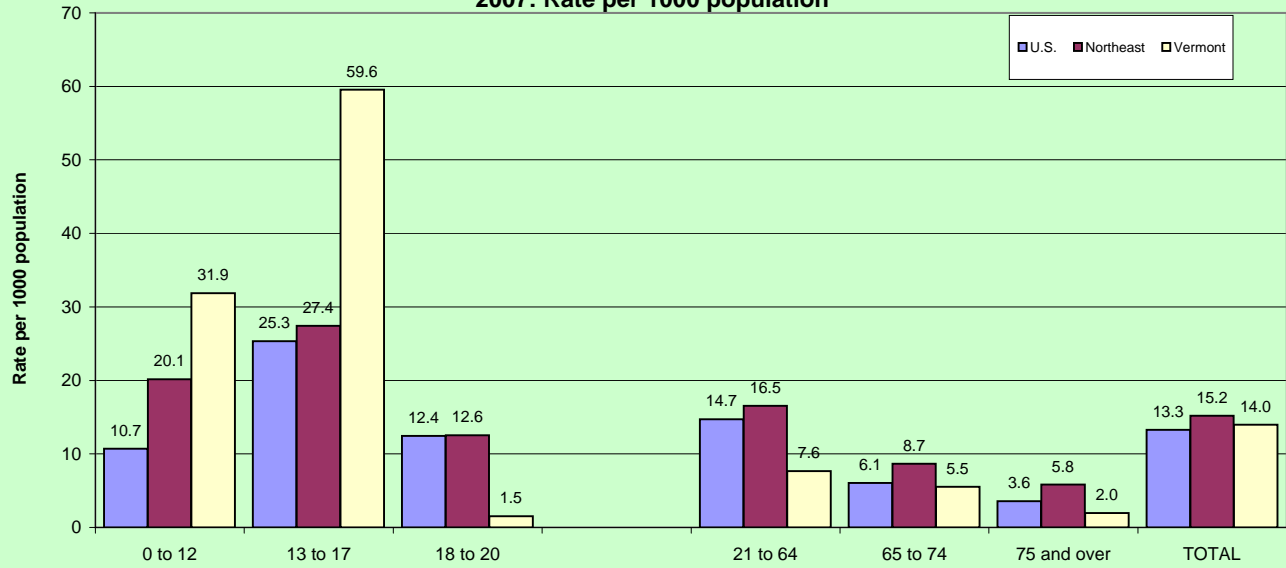
14b Age None

Gender None

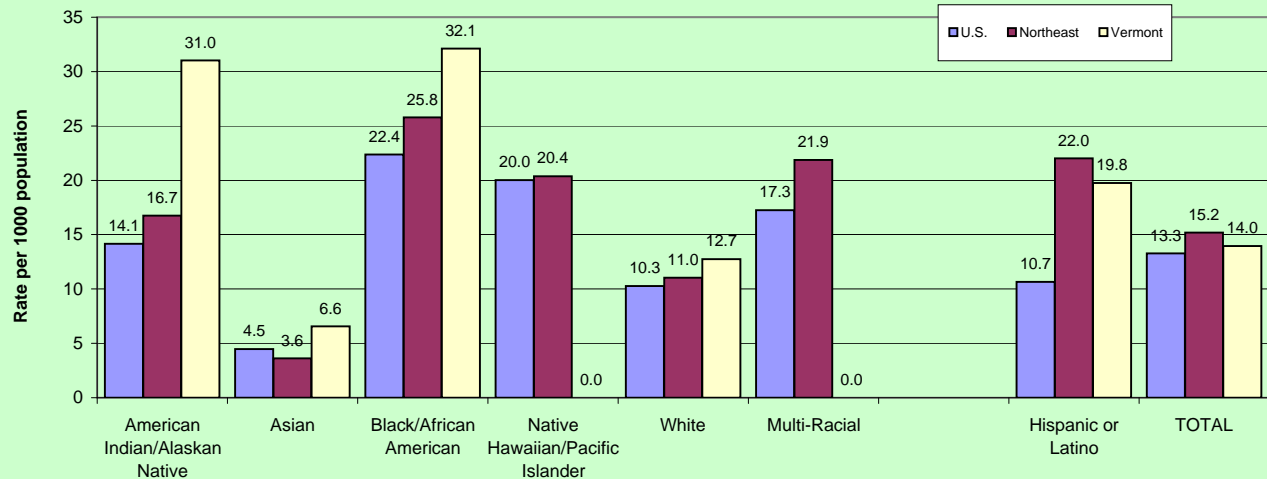
Race In Vermont, a single race code is used for Asian/Native Hawaiian/Pacific Islander. Typically these clients are of Asian origin.

Overall Unduplicated counts are based on Probabilistic Population Estimation (PPE) on a client file that includes all CMH clients and VT State Hospital caseloads for FY2007. Summing statistical estimates rounded to whole numbers results in small discrepancies.

**Rate of Mental Health Service Utilization By Age: (data from Access Domain: Table 5) URS
2007: Rate per 1000 population**



Rate of Mental Health Service Utilization By Race & Hispanic Origin: (data from Access Domain: Table 5 URS 2007: Rate per 1000 population



2007 CMHS Uniform Reporting System Output Table

APPROPRIATENESS DOMAIN: TABLE 1: Number of Admissions During the Year to State Hospital Inpatient and Community-Based Programs, FY 2007

STATE: Vermont

State Psychiatric Hospitals	State Admissions During the Year	State Total Served at the Start of Year	State Total Served During Year	U.S. Admissions During Year	U.S. Total Served at Start of Year	U.S. Total Served During Year	Admission Rate: State	Admission Rate: U.S.	States Reporting
Total	243	53	231	172,853	44,901	171,533	1.05	1.01	50
Children	1	-	1	16,957	2,134	15,776	1.00	1.07	40
Adults	242	53	230	155,892	42,762	155,739	1.05	1.00	50
Age NA	-	-	-	4	5	5	-	0.80	3

Other Inpatient	State Admissions During the Year	State Total Served at the Start of Year	State Total Served During Year	U.S. Admissions During Year	U.S. Total Served at Start of Year	U.S. Total Served During Year	Admission Rate: State	Admission Rate: U.S.	States Reporting
Total	307	16	298	446,963	36,580	346,751	1.03	1.29	38
Children	42	1	42	62,790	3,000	53,398	1.00	1.18	30
Adults	257	14	247	384,149	33,560	293,277	1.04	1.31	38
Age NA	8	1	9	24	20	23	0.89	1.04	4

Residential Treatment Centers	State Admissions During the Year	State Total Served at the Start of Year	State Total Served During Year	U.S. Admissions During Year	U.S. Total Served at Start of Year	U.S. Total Served During Year	Admission Rate: State	Admission Rate: U.S.	States Reporting
Total	36	29	63	39,855	9,478	21,583	0.57	1.85	30
Children	35	26	59	25,927	5,894	16,631	0.59	1.56	29
Adults	1	3	4	13,928	3,584	4,885	0.25	2.85	19
Age NA	-	-	-	-	-	-	-	-	-

Community Programs	State Admissions During the Year	State Total Served at the Start of Year	State Total Served During Year	U.S. Admissions During Year	U.S. Total Served at Start of Year	U.S. Total Served During Year	Admission Rate: State	Admission Rate: U.S.	States Reporting
Total	8,556	12,870	20,663	3,237,586	2,769,298	5,011,812	0.41	0.65	48
Children	3,986	5,870	8,947	945,160	707,519	1,360,397	0.45	0.69	47
Adults	4,499	6,981	11,697	2,288,918	2,059,818	3,642,822	0.38	0.63	48
Age NA	71	19	19	3,508	1,961	5,745	3.74	0.61	15

Note:

Admission Rate = number of admissions divided by total served during the year.

US Admissions During Year uses data from states reporting data only. States are only included in "US Total Served" if they also reported data on admissions.

US Total Served During Year is calculated using data in URS/DIG Table 3, State Total Served During Year is calculated using data from URS/DIG Tables 3.

This table uses data from URS/DIG Tables 3 and 6.

State Notes:

3 Age None

Gender None

Overall Unduplicated counts are based on Probabilistic Population Estimation (PPE) on a client file that includes all CMH clients for FY2007. Summing statistical estimates rounded to whole numbers results in small discrepancies.

6 Hospital None

Other Inpatient Other Psychiatric Inpatient includes individuals receiving involuntary treatment in designated community hospital psychiatric units.

Residential Residential Treatment includes children receiving Medicaid funded PNMI (Private Non-Medical Institution) residential services.

Community None

Overall None

APPROPRIATENESS DOMAIN: TABLE 2: Length of Stay (LOS) in State Psychiatric Hospitals, Other Psychiatric Inpatient and Residential Treatment Centers, FY 2007

STATE: Vermont

	Average LOS (Days) Discharged Clients: State	Median LOS (Days) Discharged Clients: State	In Facility <1 Yr Average LOS: Resident Clients: State	In Facility <1 Yr Median LOS: Resident Clients: State	In Facility >1 Yr Average LOS: Resident Clients: State	In Facility >1 Yr Median LOS: Resident Clients: State	Average LOS (Days) Discharged Clients: U.S.	Median LOS (Days) Discharged Clients: U.S.	In Facility <1 Yr Average LOS: Resident Clients: U.S.	In Facility <1 Yr Median LOS: Resident Clients: U.S.	In Facility >1 Yr Average LOS: Resident Clients: U.S.	In Facility >1 Yr Median LOS: Resident Clients: U.S.	States Reporting
State Hospitals													
All Age Groups	-	-	-	-	-	-	150	46	74	59	1,177	769	6
Children	2	2	-	-	-	-	70	50	61	46	328	300	36
Adults	88	20	65	40	1,442	826	157	49	151	83	1,634	964	49
NA	-	-	-	-	-	-	104	0	-	-	60	60	-

	Average LOS (Days) Discharged Clients: State	Median LOS (Days) Discharged Clients: State	In Facility <1 Yr Average LOS: Resident Clients: State	In Facility <1 Yr Median LOS: Resident Clients: State	In Facility >1 Yr Average LOS: Resident Clients: State	In Facility >1 Yr Median LOS: Resident Clients: State	Average LOS (Days) Discharged Clients: U.S.	Median LOS (Days) Discharged Clients: U.S.	In Facility <1 Yr Average LOS: Resident Clients: U.S.	In Facility <1 Yr Median LOS: Resident Clients: U.S.	In Facility >1 Yr Average LOS: Resident Clients: U.S.	In Facility >1 Yr Median LOS: Resident Clients: U.S.	States Reporting
Other Inpatient													
All Age Groups	-	-	-	-	-	-	13	6	18	11	245	211	5
Children	16	9	67	33	-	-	11	6	22	16	280	281	24
Adults	17	11	15	18	-	-	22	13	29	21	965	880	32
NA	13	12	-	-	-	-	1	1	-	-	-	-	-

	Average LOS (Days) Discharged Clients: State	Median LOS (Days) Discharged Clients: State	In Facility <1 Yr Average LOS: Resident Clients: State	In Facility <1 Yr Median LOS: Resident Clients: State	In Facility >1 Yr Average LOS: Resident Clients: State	In Facility >1 Yr Median LOS: Resident Clients: State	Average LOS (Days) Discharged Clients: U.S.	Median LOS (Days) Discharged Clients: U.S.	In Facility <1 Yr Average LOS: Resident Clients: U.S.	In Facility <1 Yr Median LOS: Resident Clients: U.S.	In Facility >1 Yr Average LOS: Resident Clients: U.S.	In Facility >1 Yr Median LOS: Resident Clients: U.S.	States Reporting
Residential Treatment Centers													
All Age Groups	-	-	-	-	-	-	98	85	41	37	214	160	2
Children	235	151	178	220	509	498	141	127	99	92	375	348	23
Adults	419	429	-	-	-	-	187	144	81	71	502	412	14
NA	-	-	-	-	-	-	-	-	-	-	-	-	-

Note:

Resident clients are clients who were receiving services in inpatient settings at the end of the reporting period.
This table uses data from URS/DIG Table 6.

State Notes:

Hospital None

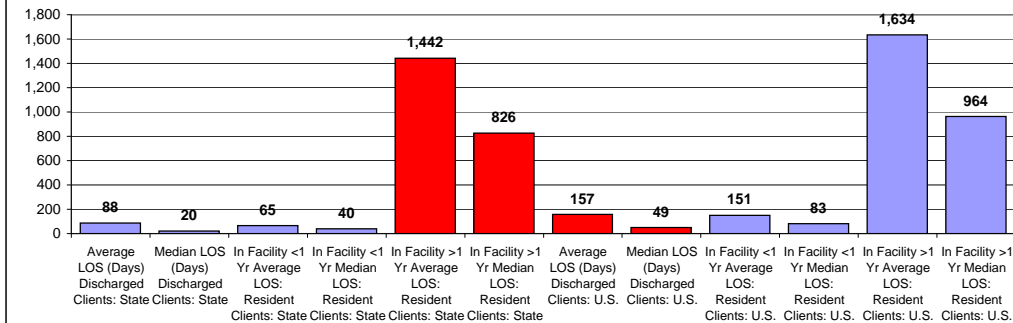
Other Inpatient Other Psychiatric Inpatient includes individuals receiving involuntary treatment in designated community hospital psychiatric units.

Residential Residential Treatment includes children receiving Medicaid funded PNMI (Private Non-Medical Institution) residential services.

Community None

Overall None

State Hospital Length of Stay Adult Patients, 2007



2007 CMHS Uniform Reporting System Output Table

APPROPRIATENESS DOMAIN: TABLE 3: Percent of Adults & Children Served who Meet the Federal Definition of SMI/SED, and Percent of Adults & Children Served who have Co-Occurring MH/AOD Disorders, FY 2007

STATE: Vermont

Adults and Children who meet the Federal Definitions of SMI/SED	State Average	US Average	US Median	States Reporting
Percent of Adults served through the SMHA who meet the Federal definition for SMI	28%	69%	70%	57
Percent of Children served through the SMHA who meet the Federal definition for SED	60%	69%	74%	56

Co-occurring MH and Substance Abuse Consumers	State Average	US Average	US Median	States Reporting
Percent of Adults served through the SMHA who had a co-occurring MH and AOD disorder	20%	24%	20%	43
Percent of Children through the SMHA who had a co-occurring MH and AOD disorder	5%	6%	4%	43
Percent of Adults served through the SMHA who had a co-occurring MH and AOD disorder who meet the Federal definition for SMI	28%	26%	19%	45
Percent of Children served through the SMHA who had a co-occurring MH and AOD disorder who meet the Federal definition for SED	3%	8%	4%	42

Note:

This table uses data from URS/DIG Table 12.

Do All Adults Served by SMHA meet the Federal Definitions of SMI?

No

Do All Children Served by SMHA meet the Federal Definitions of SED?

No

State Notes:

None

APPROPRIATENESS DOMAIN: TABLE 4: Living Situation of Consumers Served by State Mental Health Agency Systems, FY 2007

STATE: Vermont

All Persons Served	Living Situation: State	Percent in Living Situation: State	Percent with Known Living Situation: State	Living Situation: U.S.	Percent in Living Situation: U.S.	Percent with Known Living Situation: U.S.	States Reporting
Private Residence	14,419	68.3%	84.7%	3,617,109	66.2%	80.1%	54
Foster Home	719	3.4%	4.2%	97,694	1.8%	2.2%	49
Residential Care	811	3.8%	4.8%	192,921	3.5%	4.3%	52
Crisis Residence	-			56,562	1.0%	1.3%	25
Residential Tx Centers	63	0.3%	0.4%	14,359	0.3%	0.3%	38
Institutional Setting	297	1.4%	1.7%	155,433	2.8%	3.4%	50
Jail/Correctional Facility	25	0.1%	0.1%	98,813	1.8%	2.2%	51
Homeless or Shelter	233	1.1%	1.4%	133,844	2.4%	3.0%	51
Other Living Situation	448	2.1%	2.6%	146,830	2.7%	3.3%	45
Living Situation NA	4,100	19.4%		950,164	17.4%		46
Total	21,116	100.0%	100.0%	5,463,730	100.0%	100.0%	55

Children under age 18	Living Situation: State	Percent in Living Situation: State	Percent with Known Living Situation: State	Living Situation: U.S.	Percent in Living Situation: U.S.	Percent with Known Living Situation: U.S.	States Reporting
Private Residence	6,411	70.5%	87.6%	1,001,930	70.1%	84.3%	53
Foster Home	480	5.3%	6.6%	70,743	4.9%	5.9%	49
Residential Care	157	1.7%	2.1%	26,246	1.8%	2.2%	40
Crisis Residence	-			10,561	0.7%	0.9%	21
Residential Tx Centers	59	0.6%	0.8%	12,617	0.9%	1.1%	37
Institutional Setting	24	0.3%	0.3%	17,035	1.2%	1.4%	43
Jail/Correctional Facility	6	0.1%	0.1%	24,023	1.7%	2.0%	46
Homeless or Shelter	51	0.6%	0.7%	5,310	0.4%	0.4%	46
Other Living Situation	130	1.4%	1.8%	20,632	1.4%	1.7%	42
Living Situation NA	1,782	19.6%		240,930	16.8%		42
Total	9,100	100.0%	100.0%	1,430,027	100.0%	100.0%	54

Adults over age 18	Living Situation: State	Percent in Living Situation: State	Percent with Known Living Situation: State	Living Situation: U.S.	Percent in Living Situation: U.S.	Percent with Known Living Situation: U.S.	States Reporting
Private Residence	7,999	66.7%	82.6%	2,612,080	64.9%	78.7%	54
Foster Home	237	2.0%	2.4%	26,842	0.7%	0.8%	43
Residential Care	654	5.5%	6.8%	166,495	4.1%	5.0%	52
Crisis Residence	-			45,999	1.1%	1.4%	22
Residential Tx Centers	4	0.0%	0.0%	1,734	0.0%	0.1%	19
Institutional Setting	273	2.3%	2.8%	138,251	3.4%	4.2%	50
Jail/Correctional Facility	19	0.2%	0.2%	74,758	1.9%	2.3%	50
Homeless or Shelter	180	1.5%	1.9%	128,128	3.2%	3.9%	51
Other Living Situation	316	2.6%	3.3%	125,890	3.1%	3.8%	44
Living Situation NA	2,311	19.3%		704,407	17.5%		43
Total	11,993	100.0%	100.0%	4,024,584	100.0%	100.0%	55

Note:

This table uses data from URS/DIG Table15.

State Notes

Unduplicated counts are based on Probabilistic Population Estimation (PPE) on a client file that includes all CMH clients and VT State Hospital caseloads for FY2007. Summing statistical estimates rounded to whole numbers results in small discrepancies.

APPROPRIATENESS DOMAIN: TABLE 5: Persons who were Homeless by Age, Gender, and Race, FY 2007

STATE: Vermont

Age	Homeless/ Living in Shelters: State N	Homeless/ Living in Shelters: State %	Homeless/ Living in Shelters: U.S. N	Homeless/ Living in Shelters: U.S. %	Percent of Total Consumers Served Homeless/ Living in Shelters: State	Percent of Total Consumers Served Homeless/ Living in Shelters: U.S.	States Reporting
0 to 17	51	22%	5,310	4%	0.7%	0.4%	46
18 to 64	177	76%	124,741	93%	2.1%	4.0%	51
65 and Over	3	1%	3,387	3%	0.3%	1.6%	44
Not Available	2	1%	406	0%	14.3%	9.5%	13
TOTAL	233	100.0%	133,844	100%	1.4%	3.0%	51

Gender	Homeless/ Living in Shelters: State N	Homeless/ Living in Shelters: State %	Homeless/ Living in Shelters: U.S. N	Homeless/ Living in Shelters: U.S. %	Percent of Total Consumers Served Homeless/ Living in Shelters: State	Percent of Total Consumers Served Homeless/ Living in Shelters: U.S.	States Reporting
Female	100	43%	51,963	39%	1.2%	2.2%	51
Male	133	57%	81,639	61%	1.6%	3.7%	51
Not Available	-	-	236	0%		1.8%	19
TOTAL	233	100.0%	133,838	100%	1.4%	3.0%	51

Race	Homeless/ Living in Shelters: State N	Homeless/ Living in Shelters: State %	Homeless/ Living in Shelters: U.S. N	Homeless/ Living in Shelters: U.S. %	Percent of Total Consumers Served Homeless/ Living in Shelters: State	Percent of Total Consumers Served Homeless/ Living in Shelters: U.S.	States Reporting
American Indian/Alaskan Native	1	0%	2,039	2%	0.8%	3.8%	47
Asian	1	0%	1,018	1%	1.1%	1.9%	39
Black/African American	4	2%	42,941	32%	1.8%	4.6%	48
Native Hawaiian/ Pacific Islander	-	-	285	0%	-	3.3%	25
White	207	89%	71,234	53%	1.4%	2.5%	49
Hispanic or Latino	*	*	2,692	2%	*	1.9%	7
Multi-Racial	-	-	2,197	2%		2.8%	31
Not Available	20	9%	11,620	9%	1.5%	2.8%	40
TOTAL	233	100.0%	133,844	100%	1.4%	3.0%	51

Hispanic Origin	Homeless/ Living in Shelters: State N	Homeless/ Living in Shelters: State %	Homeless/ Living in Shelters: U.S. N	Homeless/ Living in Shelters: U.S. %	Percent of Total Consumers Served Homeless/ Living in Shelters: State	Percent of Total Consumers Served Homeless/ Living in Shelters: U.S.	States Reporting
Hispanic or Latino	4	2%	11,929	11%	1.5%	2.6%	42
Not Hispanic or Latino	161	69%	86,696	78%	1.2%	2.8%	44
Not Available	68	29%	12,776	11%	1.8%	3.4%	30
TOTAL	233	100.0%	111,401	100%	1.4%	2.8%	47

When is Living Situation Measured:	At Admission	At Discharge	Updated Quarterly	Other Time Period
VT	-	-	-	-
U.S.	39	21	8	28

Note:

US totals are based on states reporting.

This table uses data from URS/DIG Table 15.

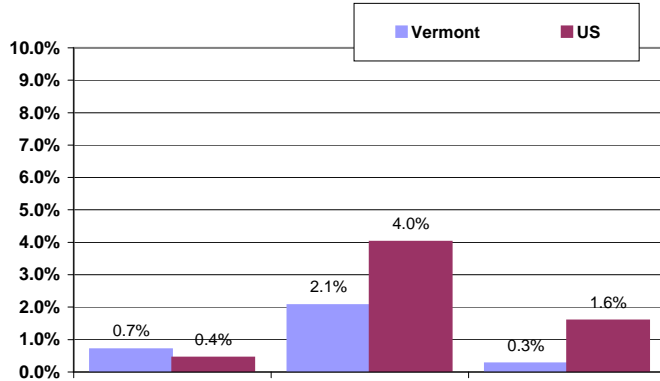
US totals are calculated uniquely for each data element based on only those states who reported numerator (clients served) data.

* Reported under Hispanic Origin

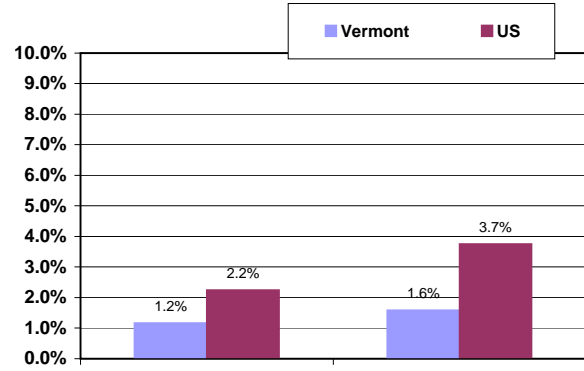
State Notes:

Unduplicated counts are based on Probabilistic Population Estimation (PPE) on a client file that includes all CMH clients and VT State Hospital caseloads for FY2007. Summing statistical estimates rounded to whole numbers results in small discrepancies.

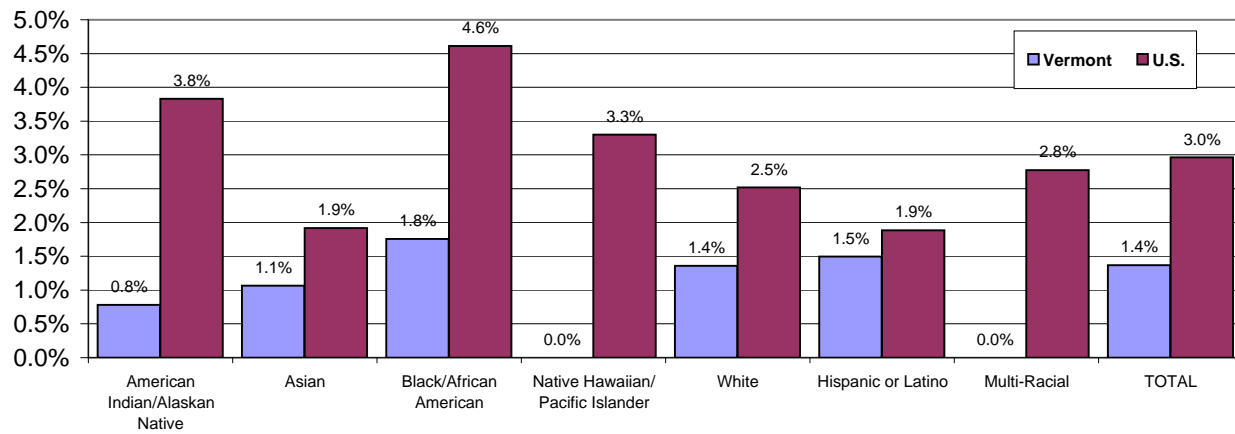
Percent of Persons Served in MH Programs who were Homeless, by Age (data from appropriateness Domain: Table 5): Year 6



Percent of Persons Served in MH Programs, who were homeless, by Gender (data from Appropriateness Domain: Table 5): Year 6



Percent of Persons Served who were Homeless by Race (data from Appropriateness Domain: Table 5): Year 6



APPROPRIATENESS DOMAIN: TABLE 6: Living in Private Residence by Age, Gender, and Race, FY 2007

STATE: Vermont

Age	Private Residence: State N	Private Residence: State %	Private Residence: U.S. N	Private Residence: U.S. %	Percent of Total Consumers in Private Residence: State	Percent of Total Consumers in Private Residence: U.S.	States Reporting
0 to 17	6,411	44%	1,001,930	28%	87.6%	84.3%	53
18 to 64	7,238	50%	2,463,181	68%	84.5%	79.3%	54
65 and Over	761	5%	148,899	4%	68.1%	69.9%	53
Not Available	9	0%	3,099	0%	64.3%	72.2%	23
TOTAL	14,419	100.0%	3,617,109	100%	84.7%	80.1%	54

Gender	Private Residence: State N	Private Residence: State %	Private Residence: U.S. N	Private Residence: U.S. %	Percent of Total Consumers in Private Residence: State	Percent of Total Consumers in Private Residence: U.S.	States Reporting
Female	7,434	52%	1,936,995	54%	86.4%	83.5%	54
Male	6,977	48%	1,668,692	46%	83.0%	76.6%	54
Not Available	8	0%	11,056	0%	88.9%	83.9%	32
TOTAL	14,419	100.0%	3,616,743	100%	84.7%	80.1%	54

Race	Private Residence: State N	Private Residence: State %	Private Residence: U.S. N	Private Residence: U.S. %	Percent of Total Consumers in Private Residence: State	Percent of Total Consumers in Private Residence: U.S.	States Reporting
American Indian/Alaskan Native	111	1%	41,640	1%	86.7%	78.2%	51
Asian	74	1%	43,202	1%	78.7%	81.4%	53
Black/African American	182	1%	699,728	19%	79.8%	75.1%	53
Native Hawaiian/ Pacific Islander	-	-	6,903	0%	-	79.9%	44
White	12,940	90%	2,312,798	64%	84.9%	81.7%	53
Hispanic or Latino	*	*	118,741	3%	*	83.1%	7
Multi-Racial	-	-	62,081	2%	-	78.4%	10
Not Available	1,112	8%	331,872	9%	84.1%	80.0%	43
TOTAL	14,419	100.0%	3,616,965	100%	84.7%	80.1%	52

Hispanic Origin	Private Residence: State N	Private Residence: State %	Private Residence: U.S. N	Private Residence: U.S. %	Percent of Total Consumers in Private Residence: State	Percent of Total Consumers in Private Residence: U.S.	States Reporting
Hispanic or Latino	229	2%	388,540	12%	85.8%	83.9%	45
Not Hispanic or Latino	11,011	76%	2,476,081	79%	85.4%	80.3%	48
Not Available	3,179	22%	281,740	9%	82.5%	74.8%	38
TOTAL	14,419	100.0%	3,146,361	100%	84.7%	80.2%	50

Note:

US totals are based on states reporting.

This table uses data from URS/DIG Table 15.

US totals are calculated uniquely for each data element based on only those states who reported numerator (clients served) data.

* Reported under Hispanic Origin Category

State Notes:

Unduplicated counts are based on Probabilistic Population Estimation (PPE) on a client file that includes all CMH clients and VT State Hospital caseloads for FY2007. Summing statistical estimates rounded to whole numbers results in small discrepancies.

APPROPRIATENESS DOMAIN: TABLE 7: Living in Jails & Other Correctional Settings by Age, Gender and Race, FY 2007

STATE: Vermont

Age	Jails & other Correctional Settings: State N	Jails & other Correctional Settings: State %	Jails & other Correctional Settings: U.S. N	Jails & other Correctional Settings: U.S. %	Percent of Consumers in Jails & other Correctional Settings: State	Percent of Consumers in Jails & other Correctional Settings: U.S.	States Reporting
0 to 17	6	24%	24,023	24%	0.1%	2.0%	46
18 to 64	19	76%	73,952	75%	0.2%	2.4%	50
65 and Over	-	-	806	1%	-	0.4%	33
Not Available	-	-	32	0%	-	0.7%	8
TOTAL	25	100.0%	98,813	100%	0.1%	2.2%	51

Gender	Jails & other Correctional Settings: State N	Jails & other Correctional Settings: State %	Jails & other Correctional Settings: U.S. N	Jails & other Correctional Settings: U.S. %	Percent of Consumers in Jails & other Correctional Settings: State	Percent of Consumers in Jails & other Correctional Settings: U.S.	States Reporting
Female	4	16%	22,375	23%	0.0%	1.0%	50
Male	21	84%	76,293	77%	0.2%	3.5%	51
Not Available	-	-	145	0%	-	1.1%	16
TOTAL	25	100.0%	98,813	100%	0.1%	2.2%	51

Race	Jails & other Correctional Settings: State N	Jails & other Correctional Settings: State %	Jails & other Correctional Settings: U.S. N	Jails & other Correctional Settings: U.S. %	Percent of Consumers in Jails & other Correctional Settings: State	Percent of Consumers in Jails & other Correctional Settings: U.S.	States Reporting
American Indian/Alaskan Native	-	-	1,103	1%	-	2.1%	36
Asian	-	-	664	1%	-	1.3%	31
Black/African American	3	12%	31,230	32%	1.3%	3.4%	47
Native Hawaiian/ Pacific Islander	-	-	313	0%	-	3.6%	16
White	18	72%	44,385	45%	0.1%	1.6%	47
Hispanic or Latino	-	-	5,762	6%	-	4.0%	6
Multi-Racial	-	-	1,414	1%	-	1.8%	27
Not Available	4	16%	13,942	14%	0.3%	3.4%	42
TOTAL	25	100.0%	98,813	100%	0.1%	2.2%	50

Hispanic Origin	Jails & other Correctional Settings: State N	Jails & other Correctional Settings: State %	Jails & other Correctional Settings: U.S. N	Jails & other Correctional Settings: U.S. %	Percent of Consumers in Jails & other Correctional Settings: State	Percent of Consumers in Jails & other Correctional Settings: U.S.	States Reporting
Hispanic or Latino	-	-	10,322	13%	-	2.2%	38
Not Hispanic or Latino	10	40%	60,193	77%	0.1%	2.0%	45
Not Available	15	60%	8,032	10%	0.4%	2.1%	30
TOTAL	25	100.0%	78,547	100%	0.1%	2.0%	48

Note:

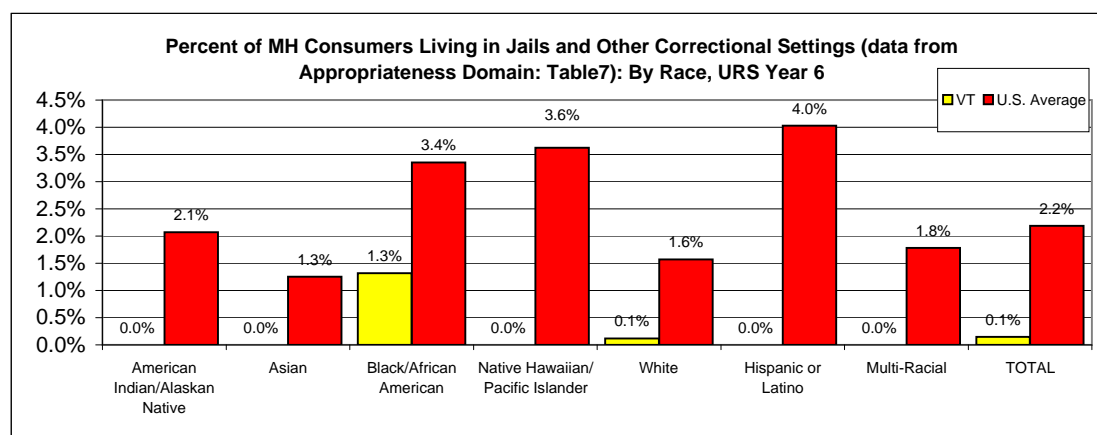
US totals are based on states reporting.

This table uses data from URS/DIG Table 15.

US totals are calculated uniquely for each data element based on only those states who reported numerator (clients served) data.

State Notes:

Unduplicated counts are based on Probabilistic Population Estimation (PPE) on a client file that includes all CMH clients and VT State Hospital caseloads for FY2007. Summing statistical estimates rounded to whole numbers results in small discrepancies.



2007 CMHS Uniform Reporting System Output Table

APPROPRIATENESS DOMAIN: TABLE 8: Evidence-Based Practices Reported by SMHAs, FY 2007

STATE: Vermont

Adult EBP Services	EBP Services: VT	SMI Population: VT	EBP Services: U.S.	SMI Population: U.S.	Penetration Rate: % of SMI Consumers Receiving EBP Services: VT	Penetration Rate: % of SMI Consumers Receiving EBP Services: U.S.	Measuring Fidelity: VT	Measuring Fidelity: U.S.	States Reporting
Supported Housing	2,400	3,109	82,230	1,530,173	77.2%	5.4%	No	3	32
Supported Employment	803	3,109	45,279	1,817,599	25.8%	2.5%	Yes	13	37
Assertive Community Treatment	304	3,109	57,054	2,083,707	9.8%	2.7%	No	21	37
Family PsychoEducation	275	3,109	14,875	817,028	8.8%	1.8%	No	3	14
Dual Diagnosis Treatment	1,081	3,109	38,673	919,841	34.8%	4.2%	Yes	9	22
Illness Self Management	230	3,109	118,413	771,596	7.4%	15.3%	No	5	18
Medications Management	-		194,637	673,270		28.9%	-	2	14

Child/Adolescent EBP Services	EBP Services: VT	SED Population: VT	EBP Services: U.S.	SED Population: U.S.	Penetration Rate: % of SED Consumers Receiving EBP Services: VT	Penetration Rate: % of SED Consumers Receiving EBP Services: U.S.	Measuring Fidelity: VT	Measuring Fidelity: U.S.	States Reporting
Therapeutic Foster Care	64	5,458	12,462	477,156	1.2%	2.6%	No	7	27
Multi Systemic Therapy	-		4,680	346,460		1.4%	-	7	16
Functional Family Therapy	-		6,204	162,890		3.8%	-	5	10

Note:

US totals are based on states reporting.

This table uses data from URS/DIG Tables 16 and 17

US totals are calculated uniquely for each data element based on only those states who reported numerator (clients served) data.

State Notes:

T16 Based on mental health program staff knowledge of treatment programs.

T17 Based on mental health program staff knowledge of treatment programs.

APPROPRIATENESS DOMAIN: TABLE 9: Evidence-Based Practices 1: Assertive Community Treatment (ACT), by Age, Gender and Race, FY 2007

STATE: Vermont

Age	ACT: State N	ACT: State %	ACT: U.S. N	ACT: U.S. %	Adults with SMI: State N	Adults with SMI: U.S. (states reporting EBP)	Penetration Rate: % of Consumers Receiving EBP Services: State	Penetration Rate: % of Consumers Receiving EBP Services: U.S.	States Reporting
18 to 20	-	-	1,059	2%	-	83,732	-	1.3%	44
21 to 64	-	-	48,283	85%	-	1,527,478	-	3.2%	44
65 to 74	-	-	1,792	3%	-	65,695	-	2.7%	44
75 and Over	-	-	418	1%	-	36,552	-	1.1%	44
Not Available	304	100%	5,491	10%	3,109	361,186	9.8%	1.5%	19
TOTAL	304	100%	57,054	100%	3,109	2,083,707	9.8%	2.7%	49

Gender	ACT: State N	ACT: State %	ACT: U.S. N	ACT: U.S. %	Adults with SMI: State N	Adults with SMI: U.S. (states reporting EBP)	Penetration Rate: % of Consumers Receiving EBP Services: State	Penetration Rate: % of Consumers Receiving EBP Services: U.S.	States Reporting
Female	-	-	23,293	41%	-	918,869	-	2.5%	43
Male	-	-	28,123	49%	-	713,255	-	3.9%	43
Not Available	304	100%	5,638	10%	3,109	776,811	9.8%	0.7%	28
TOTAL	304	100%	57,054	100%	3,109	2,083,707	9.8%	2.7%	49

Race	ACT: State N	ACT: State %	ACT: U.S. N	ACT: U.S. %	Adults with SMI: State N	Adults with SMI: U.S. (states reporting EBP)	Penetration Rate: % of Consumers Receiving EBP Services: State	Penetration Rate: % of Consumers Receiving EBP Services: U.S.	States Reporting
American Indian/Alaskan Native	-	-	523	1%	-	14,641	-	3.6%	41
Asian	-	-	683	1%	-	19,754	-	3.5%	43
Black/African American	-	-	13,871	24%	-	355,133	-	3.9%	42
Native Hawaiian/ Pacific Islander	-	-	256	0%	-	4,536	-	5.6%	39
White	-	-	32,773	57%	-	1,093,087	-	3.0%	44
Hispanic or Latino	-	-	17	0%	-	3,681	-	0.5%	5
Multi-Racial	-	-	882	2%	-	18,180	-	4.9%	32
Not Available	304	100%	8,012	14%	3,109	757,785	9.8%	1.1%	45
TOTAL	304	100%	57,054	100%	3,109	2,083,707	9.8%	2.7%	49

Hispanic Origin	ACT: State N	ACT: State %	ACT: U.S. N	ACT: U.S. %	Adults with SMI: State N	Adults with SMI: U.S. (states reporting EBP)	Penetration Rate: % of Consumers Receiving EBP Services: State	Penetration Rate: % of Consumers Receiving EBP Services: U.S.	States Reporting
Hispanic or Latino	-	-	3,214	6%	-	150,507	-	2.1%	39
Not Hispanic or Latino	-	-	42,549	75%	-	1,263,139	-	3.4%	40
Not Available	304	100%	8,938	16%	3,109	832,834	9.8%	1.1%	39
TOTAL	304	100%	57,054	100%	3,109	2,083,707	9.8%	2.7%	49

Fidelity	ACT: State N	ACT: U.S. N	ACT: U.S. %	Adults with SMI: State N	Adults with SMI: U.S. (states reporting EBP)	Penetration Rate: % of Consumers Receiving EBP Services: State	Penetration Rate: % of Consumers Receiving EBP Services: U.S.	States Reporting
Measures Fidelity	-	27,717	49%	-	1,211,877	-	2.3%	21
Does Not Measure Fidelity	304	29,337	51%	3,109	1,095,784	9.8%	2.7%	28

1. State Measures Fidelity of EBP? No

States Measuring Fidelity = 21

2. What Fidelity Measure is Used? -

3. Who Conducts Fidelity Measure? -

4. How often is Fidelity Measured? -

5. Is the SAMHSA EBP Toolkit used to
guide EBP Implementation?

No

SAMHSA Toolkit used = 15

6. Have staff been specifically trained
to implement the EBP?

Yes

EBP Training = 22

Note:

US totals are based on states reporting.

This table uses data from URS/DIG Table 16

US totals are calculated uniquely for each data element based on only those states who reported numerator (clients served) data.

State Notes:

Based on mental health program staff knowledge of treatment programs.

APPROPRIATENESS DOMAIN: TABLE 10: Evidence-Based Practices 2: Supported Employment, by Age, Gender, & Race, FY 2007

STATE: Vermont

Age	Supported Employment: State N	Supported Employment: State %	Supported Employment: U.S. N	Supported Employment: U.S. %	Adults with SMI - State N	Adults with SMI (States reporting EBP): U.S. N	Penetration Rate: % of SMI Consumers Receiving EBP Service: State	Penetration Rate: % of SMI Consumers Receiving EBP Service: U.S.	States Reporting
18 to 20	-	-	1,827	4%	-	60,149	-	3.0%	26
21 to 64	-	-	35,889	79%	-	1,292,772	-	2.8%	30
65 to 74	-	-	464	1%	-	53,742	-	0.9%	25
75 and Over	-	-	102	0%	-	24,628	-	0.4%	17
Not Available	803	100%	6,296	14%	3,109	368,847	25.8%	1.7%	12
TOTAL	803	100%	45,279	98%	3,109	1,817,599	25.8%	2.5%	37

Gender	Supported Employment: State N	Supported Employment: State %	Supported Employment: U.S. N	Supported Employment: U.S. %	Adults with SMI - State N	Adults with SMI (States reporting EBP): U.S. N	Penetration Rate: % of SMI Consumers Receiving EBP Service: State	Penetration Rate: % of SMI Consumers Receiving EBP Service: U.S.	States Reporting
Female	-	-	17,826	39%	-	765,959	-	2.3%	29
Male	-	-	20,437	45%	-	598,827	-	3.4%	29
Not Available	803	100%	6,503	14%	3,109	777,887	25.8%	0.8%	10
TOTAL	803	100%	45,279	99%	3,109	1,817,599	25.8%	2.5%	37

Race	Supported Employment: State N	Supported Employment: State %	Supported Employment: U.S. N	Supported Employment: U.S. %	Adults with SMI - State N	Adults with SMI (States reporting EBP): U.S. N	Penetration Rate: % of SMI Consumers Receiving EBP Service: State	Penetration Rate: % of SMI Consumers Receiving EBP Service: U.S.	States Reporting
American Indian/Alaskan Native	-	-	379	1%	-	9,777	-	3.9%	24
Asian	-	-	554	1%	-	17,608	-	3.1%	24
Black/African American	-	-	6,177	14%	-	271,947	-	2.3%	28
Native Hawaiian/ Pacific Islander	-	-	209	0%	-	4,197	-	5.0%	15
White	-	-	26,489	59%	-	921,249	-	2.9%	28
Hispanic or Latino	-	-	17	0%	-	3,324	-	0.5%	2
Multi-Racial	-	-	797	2%	-	12,021	-	6.6%	19
Not Available	803	100%	10,741	24%	3,109	755,213	25.8%	1.4%	29
TOTAL	803	100%	45,279	100%	3,109	1,817,599	25.8%	2.5%	37

Hispanic Origin	Supported Employment: State N	Supported Employment: State %	Supported Employment: U.S. N	Supported Employment: U.S. %	Adults with SMI - State N	Adults with SMI (States reporting EBP): U.S. N	Penetration Rate: % of SMI Consumers Receiving EBP Service: State	Penetration Rate: % of SMI Consumers Receiving EBP Service: U.S.	States Reporting
Hispanic or Latino	-	-	2,120	5%	-	148,819	-	1.4%	25
Not Hispanic or Latino	-	-	33,018	73%	-	1,054,203	-	3.1%	26
Not Available	803	100%	7,680	17%	3,109	776,024	25.8%	1.0%	24
TOTAL	803	100%	45,279	95%	3,109	1,817,599	25.8%	2.5%	37

Fidelity	Supported Employment: State N	Supported Employment: U.S. N	Supported Employment: U.S. %	Adults with SMI - State N	Adults with SMI (States reporting EBP): U.S. N	Penetration Rate: % of SMI Consumers Receiving EBP Service: State	Penetration Rate: % of SMI Consumers Receiving EBP Service: U.S.	States Reporting
Measures Fidelity	-	14,013	31%	-	1,211,877	-	1.2%	13
Does Not Measure Fidelity	803	31,507	69%	3,109	1,684,647	25.8%	1.9%	24

1. State Measures Fidelity of EBP? Yes
2. What Fidelity Measure is Used? Dartmouth Supported Employment Scale
3. Who Conducts Fidelity Measure? DMH
4. How often is Fidelity Measured? as requested
5. Is the SAMHSA EBP Toolkit used to guide EBP Implementation? Yes
6. Have staff been specifically trained to implement the EBP? Yes

States Measuring Fidelity = 13

SAMHSA Toolkit used = 15

EBP Training = 15

Note:

US totals are based on states reporting.

This table uses data from URS/DIG Table 16

US totals are calculated uniquely for each data element based on only those states who reported numerator (clients served) data.

State Notes:

Based on mental health program staff knowledge of treatment programs.

APPROPRIATENESS DOMAIN: TABLE 11: Evidence-Based Practices 3: Supported Housing by Age, Gender & Race, FY 2007

STATE: Vermont

Age	Supported Housing: State N	Supported Housing: State %	Supported Housing: U.S. N	Supported Housing: U.S. %	Adults with SMI: State N	Adults with SMI: U.S. (states reporting EBP)	Penetration Rate: % of SMI Consumers Receiving EBP Service: State	Penetration Rate: % of SMI Consumers Receiving EBP Service: U.S.	States Reporting
18 to 20	-	-	2,247	3%	-	53,376	-	4.2%	25
21 to 64	-	-	69,303	84%	-	1,171,411	-	5.9%	27
65 to 74	-	-	2,140	3%	-	50,675	-	4.2%	26
75 and Over	-	-	643	1%	-	25,411	-	2.5%	23
Not Available	2,400	100%	7,897	10%	3,109	219,784	77.2%	3.6%	10
TOTAL	2,400	100%	82,230	100%	3,109	1,530,173	77.2%	5.4%	32

Gender	Supported Housing: State N	Supported Housing: State %	Supported Housing: U.S. N	Supported Housing: U.S. %	Adults with SMI: State N	Adults with SMI: U.S. (states reporting EBP)	Penetration Rate: % of SMI Consumers Receiving EBP Service: State	Penetration Rate: % of SMI Consumers Receiving EBP Service: U.S.	States Reporting
Female	-	-	37,786	46%	-	681,264	-	5.5%	26
Male	-	-	36,493	44%	-	545,184	-	6.7%	26
Not Available	2,400	100%	8,146	10%	3,109	303,378	77.2%	2.7%	9
TOTAL	2,400	100%	82,230	100%	3,109	1,530,173	77.2%	5.4%	32

Race	Supported Housing: State N	Supported Housing: State %	Supported Housing: U.S. N	Supported Housing: U.S. %	Adults with SMI: State N	Adults with SMI: U.S. (states reporting EBP)	Penetration Rate: % of SMI Consumers Receiving EBP Service: State	Penetration Rate: % of SMI Consumers Receiving EBP Service: U.S.	States Reporting
American Indian/Alaskan Native	-	-	1,164	1%	-	9,249	-	12.6%	22
Asian	-	-	1,138	1%	-	16,033	-	7.1%	21
Black/African American	-	-	16,323	20%	-	241,026	-	6.8%	24
Native Hawaiian/ Pacific Islander	-	-	307	0%	-	4,563	-	6.7%	19
White	-	-	50,039	61%	-	801,991	-	6.2%	25
Hispanic or Latino	-	-	20	0%	-	27	-	74.1%	5
Multi-Racial	-	-	-	-	-	18,872	-	-	5
Not Available	2,400	100%	12,609	15%	3,109	289,689	77.2%	4.4%	25
TOTAL	2,400	100%	82,230	99%	3,109	1,530,173	77.2%	5.4%	32

Hispanic Origin	Supported Housing: State N	Supported Housing: State %	Supported Housing: U.S. N	Supported Housing: U.S. %	Adults with SMI: State N	Adults with SMI: U.S. (states reporting EBP)	Penetration Rate: % of SMI Consumers Receiving EBP Service: State	Penetration Rate: % of SMI Consumers Receiving EBP Service: U.S.	States Reporting
Hispanic or Latino	-	-	6,084	7%	-	138,219	-	4.4%	21
Not Hispanic or Latino	-	-	61,191	74%	-	965,124	-	6.3%	25
Not Available	2,400	100%	14,969	18%	3,109	423,490	77.2%	3.5%	25
TOTAL	2,400	100%	82,230	100%	3,109	1,530,173	77.2%	5.4%	32

Fidelity	Supported Housing: State N	Supported Housing: U.S. N	Supported Housing: U.S. %	Adults with SMI: State N	Adults with SMI: U.S. (states reporting EBP)	Penetration Rate: % of SMI Consumers Receiving EBP Service: State	Penetration Rate: % of SMI Consumers Receiving EBP Service: U.S.	States Reporting
Measures Fidelity	-	7,934	10%	-	1,211,877	-	0.7%	3
Does Not Measure Fidelity	2,400	75,341	90%	3,109	2,025,895	-	3.7%	29

1. State Measures Fidelity of EBP? No

States Measuring Fidelity = 3

2. What Fidelity Measure is Used? -

3. Who Conducts Fidelity Measure? -

4. How often is Fidelity Measured? -

5. Is the SAMHSA EBP Toolkit used to guide EBP Implementation? No

SAMHSA Toolkit used = 6

6. Have staff been specifically trained to implement the EBP? No

EBP Training = 9

Note:

US totals are based on states reporting.

This table uses data from URS/DIG Table 16.

US totals are calculated uniquely for each data element based on only those states who reported numerator (clients served) data.

State Notes:

Based on mental health program staff knowledge of treatment programs.

APPROPRIATENESS DOMAIN: Table 12: Evidence-Based Practices 4: Family Psychoeducation by Age, Gender & Race, FY 2007

STATE: Vermont

Age	Family Psycho-education: State N	Family Psycho-education: State %	Family Psycho-education: U.S. N	Family Psycho-education: U.S. %	Adults with SMI: State N	Adults with SMI: U.S. (states reporting EBP)	Penetration Rate: % of SMI Consumers Receiving EBP Service: State	Penetration Rate: % of SMI Consumers Receiving EBP Service: U.S.	States Reporting
18 to 20	-	-	227	2%		8,804	-	2.6%	6
21 to 64	-	-	2,241	15%		244,651	-	0.9%	9
65 to 74	-	-	74	0%		5,475	-	1.4%	6
75 and Over	-	-	37	0%		3,961	-	0.9%	5
Not Available	275	100%	12,452	83%	3,109	544,601	8.8%	2.3%	7
TOTAL	275	100%	15,031	100%	3,109	817,028	8.8%	1.8%	14

Gender	Family Psycho-education: State N	Family Psycho-education: State %	Family Psycho-education: U.S. N	Family Psycho-education: U.S. %	Adults with SMI: State N	Adults with SMI: U.S. (states reporting EBP)	Penetration Rate: % of SMI Consumers Receiving EBP Service: State	Penetration Rate: % of SMI Consumers Receiving EBP Service: U.S.	States Reporting
Female	-	-	1,046	7%		107,969	-	1.0%	7
Male	-	-	862	6%		80,548	-	1.1%	7
Not Available	275	100%	13,123	87%	3,109	544,601	8.8%	2.4%	9
TOTAL	275	100%	15,031	100%	3,109	817,028	8.8%	1.8%	14

Race	Family Psycho-education: State N	Family Psycho-education: State %	Family Psycho-education: U.S. N	Family Psycho-education: U.S. %	Adults with SMI: State N	Adults with SMI: U.S. (states reporting EBP)	Penetration Rate: % of SMI Consumers Receiving EBP Service: State	Penetration Rate: % of SMI Consumers Receiving EBP Service: U.S.	States Reporting
American Indian/Alaskan Native	-	-	25	0%		1,014	-	2.5%	4
Asian	-	-	28	0%		847	-	3.3%	4
Black/African American	-	-	108	1%		37,295	-	0.3%	7
Native Hawaiian/ Pacific Islander	-	-	7	0%		166	-	4.2%	2
White	-	-	1,419	9%		113,980	-	1.2%	7
Hispanic or Latino	-	-					-	-	
Multi-Racial	-	-	10	0%		2,186	-	0.5%	2
Not Available	275	100%	13,434	89%	3,109	544,602	8.8%	2.5%	12
TOTAL	275	100%	15,031	100%	3,109	817,028	8.8%	1.8%	14

Hispanic Origin	Family Psycho-education: State N	Family Psycho-education: State %	Family Psycho-education: U.S. N	Family Psycho-education: U.S. %	Adults with SMI: State N	Adults with SMI: U.S. (states reporting EBP)	Penetration Rate: % of SMI Consumers Receiving EBP Service: State	Penetration Rate: % of SMI Consumers Receiving EBP Service: U.S.	States Reporting
Hispanic or Latino	-	-	243	2%		17,223	-	1.4%	5
Not Hispanic or Latino	-	-	1,375	9%		134,391	-	1.0%	5
Not Available	275	100%	13,350	89%	3,109	578,197	8.8%	2.3%	12
TOTAL	275	100%	15,031	100%	3,109	817,028	8.8%	1.8%	14

1. State Measures Fidelity of EBP? No
2. What Fidelity Measure is Used? -
3. Who Conducts Fidelity Measure? -
4. How often is Fidelity Measured? -

States Measuring Fidelity = 3

5. Is the SAMHSA EBP Toolkit used to guide EBP Implementation? Yes

SAMHSA Toolkit used = 5

6. Have staff been specifically trained to implement the EBP? Yes

EBP Training = 7

Note:

US totals are based on states reporting.

This table uses data from URS/DIG Tables 16 and 17.

US totals are calculated uniquely for each data element based on only those states who reported numerator (clients served) data.

State Notes:

Based on mental health program staff knowledge of treatment programs.

2007 CMHS Uniform Reporting System Output Table

OUTCOMES DOMAIN: TABLE 1: Employment Status of Adult Mental Health Consumers Served in the Community by Age & Gender, FY 2007

STATE: Vermont

Age	Employed: State N	Unemployed: State N	Adults in Labor Force*: State N	Adults with Known Employment Status**: State N	Employed as % of those in Labor Force: State	Employed as % of those in Labor Force: U.S.	Employed as % of Served in Community: State	Employed as % of Served in Community: U.S.	States Reporting
18 to 20	146	137	283	396	52%	39%	37%	18%	39
21 to 64	2,713	3,556	6,269	7,552	43%	40%	36%	22%	43
65 and Over	61	33	94	1,086	65%	26%	6%	7%	40
Not Available	-	-	-	-	-	49%	-	13%	22
TOTAL	2,920	3,726	6,646	9,034	44%	39%	32%	21%	55

Gender	Employed: State N	Unemployed: State N	Adults in Labor Force*: State N	Adults with Known Employment Status**: State N	Employed as % of those in Labor Force: State	Employed as % of those in Labor Force: U.S.	Employed as % of Served in Community: State	Employed as % of Served in Community: U.S.	States Reporting
Female	1,546	2,043	3,589	5,095	43%	40%	30%	21%	55
Male	1,371	1,681	3,052	3,933	45%	40%	35%	22%	55
Not Available	3	2	5	6	60%	23%	50%	18%	27
TOTAL	2,920	3,726	6,646	9,034	44%	39%	32%	21%	55

What Populations are Reported:

All Clients

All Clients = 32

Some Clients = 9

When is Employment Status Measured?	At Admission	At Discharge	Updated Monthly	Updated Quarterly	Other Time Period
Vermont	-	-	-	-	SMI - quarterly; all else - annually
U.S.	38	24	2	8	28

Note:

*Adults Served in Labor Force is the sum of MH consumers employed plus unemployed.

**Adults Served with Known Employment Status excludes persons for whom employment status was unknown.

MH Consumers Employed as % of Total Adults Served uses Adults Served as the denominator.

MH Consumers Employed as % of Adults served in Labor Force uses persons employed or Unemployed as the denominator.

This table uses data from URS/DIG Table 4.

State Notes:

Age None

Gender None

Overall Employment status for adults(18-64) with SMI is based on data linkage with the state Department of Employment and Training database for FY2007. Employment status for other MH clients is based on case manager reports from monthly service reports.

2007 CMHS Uniform Reporting System Output Table

OUTCOMES DOMAIN: TABLE 1a: Employment Status of Adult Mental Health Consumers Served in the Community by Diagnosis, FY 2007

STATE: Vermont

Diagnosis	Employed: State	Unemployed: State	Adults in Labor Force*: State	Adults with Known Employment Status**: State	Employed as % of those in Labor Force: State	Employed as % of those in Labor Force: U.S.	Employed as % of Served in Community: State	Employed as % of Served in Community: U.S.	States Reporting	Percent of Consumers with Dx: State	Percent of Consumers with Dx: U.S.
Schizophrenia and Related Disorders	266	886	1,152	1,346	23%	30%	20%	11%	39	11.6%	15.1%
Bipolar and Mood Disorders	1,200	1,437	2,637	3,756	46%	41%	32%	21%	39	38.8%	41.5%
Other Psychoses	47	112	159	207	30%	30%	23%	13%	39	2.1%	3.8%
All Other Diagnoses	1,321	1,196	2,517	3,828	52%	47%	35%	24%	39	41.9%	29.0%
No Diagnosis and Deferred Diagnosis	137	154	291	402	47%	56%	34%	35%	35	5.6%	10.5%
TOTAL	2,971	3,785	6,756	9,539	44%	43%	31%	21%	39	100.0%	100.0%

Employment status for adults (18-64) with SMI is based on data linkage with the state Department of Employment and Training database for FY2007. Employment status for other MH clients is based on case manager reports from monthly service reports.

State Notes:

Note:

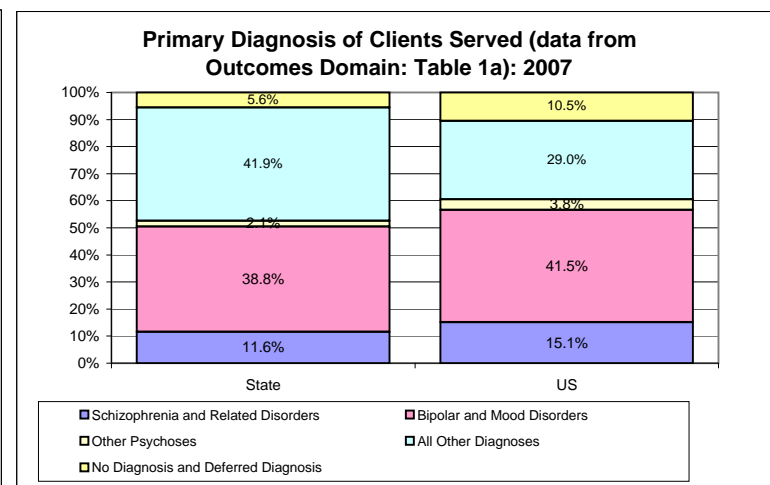
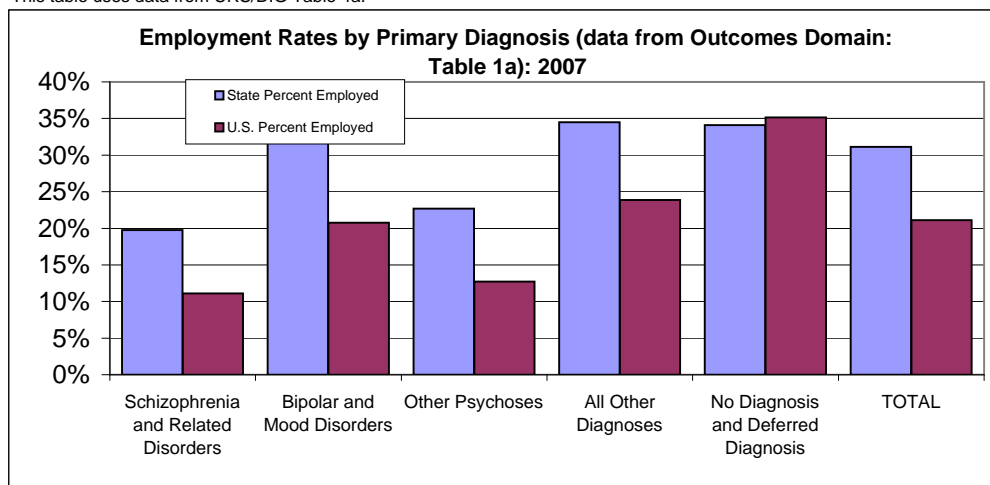
*Adults Served in Labor Force is the sum of MH consumers employed plus unemployed.

**Adults Served with Known Employment Status excludes persons for whom employment status was unknown.

MH Consumers Employed as % of Total Adults Served uses Adults Served as the denominator.

MH Consumers Employed as % of Adults served in Labor Force uses persons employed or Unemployed as the denominator.

This table uses data from URS/DIG Table 4a.



2007 CMHS Uniform Reporting System Output Table

OUTCOMES DOMAIN: TABLE 2: Consumer Survey Results, FY 2007

STATE: Vermont

Indicators	Children: VT	Children: U.S. Average	States Reporting	Adults: VT	Adults: U.S. Average	States Reporting
1. Percent Reporting Positively About Access.	80%	85%	50	76%	85%	54
2. Percent Reporting Positively About Quality and Appropriateness for Adults / Reporting Positively about Satisfaction for Children.	77%	84%	51	81%	86%	54
3. Percent Reporting Positively About Outcomes.	57%	65%	51	67%	71%	55
4. Percent of Family Members Reporting on Participation In treatment Planning.	74%	87%	51			
5. Percent of Family Members Reporting High Cultural Sensitivity of Staff.	29%	93%	50			
6. Percent of Adults Reporting on Participation In Treatment Planning.				71%	82%	54
7. Percent of Adults Reporting on Positively about General Satisfaction with Services.				81%	87%	55

Note: U.S. Average Children & Adult rates are only calculated for states that used a version of the MHSIP Consumer Survey

This table uses data from URS/DIG Table 11.

Question 1	VT	U.S.	VT	US
1. Which Consumer Survey was used?	-	YSS-F = 42	-	28 Item MHSIP = 30 Other MHSIP = 25 Other Survey = 1

Question 2	VT	U.S.	VT	U.S.
2. Did you use a Spanish translation?	-	22	-	24

How many responses are the results based on?	VT	U.S.	States Reporting	VT	U.S.	States Reporting
Response Rate	24%	47%		35.7%	56.3%	
Number of Surveys Attempted (sent out)	3,235	127,044	44	2,213	198,199	40
Number of Surveys Contacts Made	3,081	109,592	37	2,073	191,277	34
Complete Surveys	737	56,756	46	741	148,565	48

Question 3	VT	U.S.	VT	U.S.
3. Populations covered in survey?	Sample	Sample = 39	Sample	Sample = 48
		All Consumers = 13		All Consumers = 8

4. Sample Approach	VT	U.S.	VT	U.S.
Random Sample Conducted?	Yes	18	Yes	17
Stratified Sample Conducted?	-	6	-	10
Convenience Sample Conducted?	-	19	-	22
Other Sample	-	14	-	12

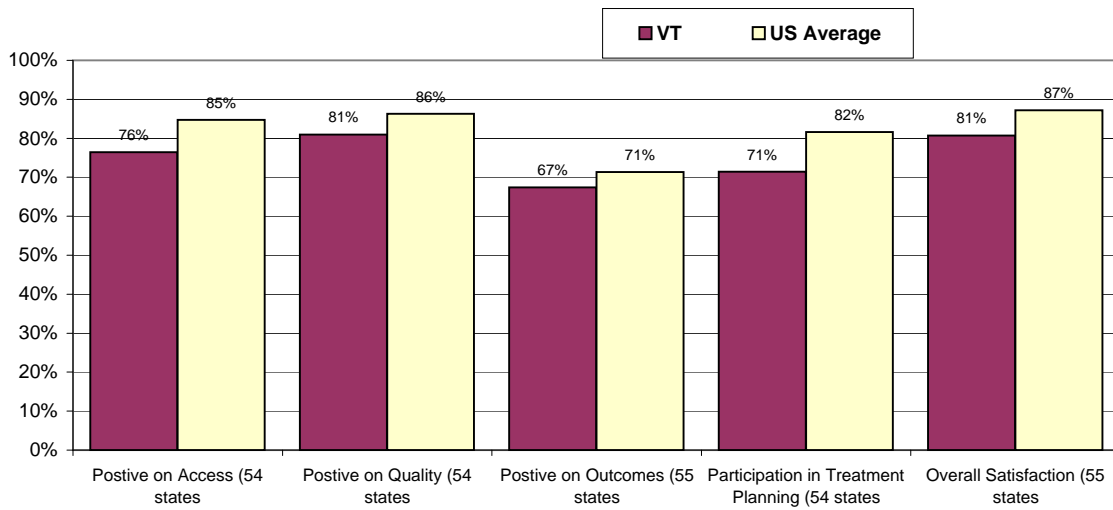
5. Who is Sampled?	VT	U.S.	VT	U.S.
Current Clients	Yes	53	Yes	54
Former Clients	Yes	15	Yes	12

6. Please describe the populations included in your sample: (e.g., all adults, only adults with SMI, etc.)	VT	U.S.	VT	U.S.
All Adults or Children Served	Yes -	32	SMI Adults	31
SMI Adults or SED Children	Yes -	17	SMI Adults	20
Persons Covered by Medicaid	Yes -	9	SMI Adults	10

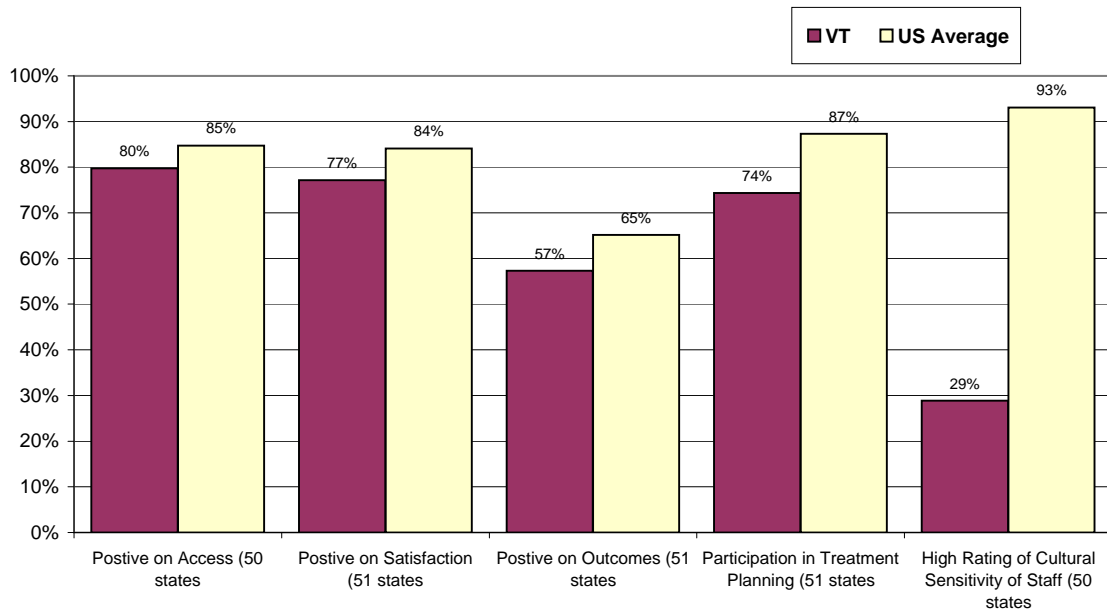
State Notes:

None

URS Year 6 Adult Consumer Survey Results (data from Outcomes Domain: Table 2)



URS Year 6 Child Consumer Survey Results (data from Outcomes Domain: Table 2)



OUTCOMES DOMAIN: TABLE 3: Consumer Survey Results, by Race/Ethnicity, FY 2007

STATE: Vermont

Race/Ethnicity	Reporting Positively About Access (Adults): State	Reporting Positively About Access (Adults): U.S. Average	Reporting Positively About Quality and Appropriateness (Adults): State	Reporting Positively About Quality & Appropriateness (Adults): U.S. Average	Reporting Positively About Outcomes (Adults): State	Reporting Positively About Outcomes (Adults): U.S. Average	Adults Reporting on Participation In Treatment Planning: State	Adults Reporting on Participation In Treatment Planning: U.S.	Adults Reporting Positively about General Satisfaction with Services: State	Adults Reporting Positively about General Satisfaction with Services: U.S.	Adults Positive About Social Connectedness: State	Adults Positive About Social Connectedness: U.S.	Adults Positive About Improved Functioning: State	Adults Positive About Improved Functioning: U.S.	States
Total	76%	84%	81%	86%	67%	70%	71%	82%	81%	87%	65%	52%	65%	46%	45
American Indian/Alaskan Native	50%	81%	75%	83%	67%	68%	25%	80%	50%	85%	50%	64%	50%	60%	39
Asian	100%	89%	75%	86%	50%	75%	63%	87%	75%	89%	38%	71%	38%	71%	35
Black/African American	86%	86%	100%	85%	67%	72%	71%	83%	86%	87%	50%	53%	67%	47%	41
Native Hawaiian/Pacific	-	85%	-	81%	-	76%	-	80%	-	85%	-	78%	-	74%	26
White	76%	84%	81%	86%	68%	69%	72%	82%	81%	87%	66%	51%	66%	45%	42
Multi-Racial	-	81%	-	84%	-	67%	-	81%	-	85%	-	47%	-	42%	25
Other	81%	87%	81%	83%	63%	71%	67%	86%	90%	89%	45%	46%	50%	39%	41
Hispanic	-	88%	-	87%	-	75%	-	87%	-	90%	-	70%	-	65%	41

Race/Ethnicity	Reporting Positively About Access for Children: State	Reporting Positively About Access for Children: U.S.	Reporting Positively About General Satisfaction with Services for Children: State	Reporting Positively About General Satisfaction with Services for Children: U.S.	Reporting Positively About Outcomes: State	Reporting Positively About Outcomes: U.S.	Reporting Positively about Participation In Treatment Planning: State	Reporting Positively about Participation In Treatment Planning: U.S.	Percent Reporting High Cultural Sensitivity of Staff: State	Percent Reporting High Cultural Sensitivity of Staff: State	Families Positive About Social Connectedness: State	Families Positive About Social Connectedness: U.S.	Families Positive About Improved Functioning: State	Families Positive About Improved Functioning: U.S.	States
Total	80%	84%	77%	83%	57%	75%	74%	88%	29%	92%	-	84%	-	53%	39
American Indian/Alaskan Native	86%	84%	86%	83%	67%	68%	71%	86%	29%	92%	-	86%	-	64%	32
Asian	88%	83%	75%	88%	75%	70%	88%	89%	50%	91%	-	77%	-	67%	36
Black/African American	75%	77%	71%	84%	54%	78%	78%	89%	33%	95%	-	84%	-	51%	15
Hawaiian/Pacific Islander	-	85%	-	88%	-	70%	-	90%	-	93%	-	86%	-	69%	23
White	80%	83%	77%	82%	57%	75%	74%	87%	29%	91%	-	82%	-	52%	35
Multi-Racial	-	83%	-	84%	-	68%	-	89%	-	94%	-	85%	-	54%	34
Other	81%	89%	77%	85%	65%	76%	65%	89%	23%	95%	-	87%	-	56%	24
Hispanic	-	88%	-	88%	-	70%	-	89%	-	95%	-	86%	-	68%	21

Note:

This table uses data from URS/DIG Table 11a.

State Notes:

None

OUTCOMES DOMAIN: TABLE 4: Change in Social Connectedness & Functioning, FY 2007

STATE: Vermont

Indicators	Children: State	Children: U.S. Average	Children: U.S. Median	Children: States Reporting	Adults: State	Adults: U.S. Average	Adults: U.S. Median	Adults: States Reporting
1. Percent Reporting Improved Social Connectedness From Services	-	84%	80%	36	65%	72%	70%	45
2. Percent Reporting Improved Functioning From Services	-	64%	59%	39	65%	70%	69%	42

This table uses data from URS/DIG Table 9.

Note: U.S. Average & Median rates are calculated only for states that used the recommended Social Connectedness & Functioning questions.

Adult Social Connectedness and Functioning Measures	State	U.S.
1. Did you use the recommended new Social Connectedness Questions?	Yes	41
If No, what measure did you use?	-	-
2: Did you use the recommended new Functioning Domain Questions?	Yes	39
If No, what measure did you use?	-	-
3. Did you collect these as part of your MHSIP Adult Consumer Survey?	Yes	38
If No, what source did you use?	-	-

Child/Family Social Connectedness and Functioning Measures	State	U.S.
4: Did you use the recommended new Social Connectedness Questions?	No	32
If No, what measure did you use?	-	-
5: Did you use the recommended new Functioning Domain Questions?	No	34
If No, what measure did you use?	-	-
6. Did you collect these as part of your YSS-F Survey?	No	31
If No, what source did you use?	-	-

State Notes:

Recommended questions were included in the Adult Consumer Survey, but not in the Child/Adolescent Consumer Survey.

OUTCOMES DOMAIN: TABLE 5: Readmission within 30 Days by Age, Gender, and Race, FY 2007

STATE: Vermont

	"Civil" (Non- Forensic) Patients Readmissions: State N	"Civil" (Non- Forensic) Patients Discharges: State N	"Civil" (Non- Forensic) Patients Readmissions: State %	"Civil" (Non- Forensic) Patients Readmissions: U.S. N	"Civil" (Non- Forensic) Patients Discharges: U.S. N	"Civil" (Non- Forensic) Patients Readmissions: U.S. %	States Reporting	Forensic Patients Readmissions: State N	Forensic Patients Discharges: State N	Forensic Patients Readmissions: State %	Forensic Patients Readmissions: U.S. N	Forensic Patients Discharges: U.S. N	Forensic Patients Readmissions: U.S. %	State Reporting
Age														
0 to 12	-	-	-	242	3,212	7.5%	15	-	-	-	2	16	12.5%	1
13 to 17	-	-	-	739	11,511	6.4%	25	-	1	-	25	375	6.7%	5
18 to 20	-	3	-	788	8,275	9.5%	38	-	6	-	27	804	3.4%	8
21 to 64	41	161	25.5%	11,825	119,974	9.9%	48	-	61	-	562	13,976	4.0%	29
65 to 74	-	7	-	252	3,137	8.0%	33	-	2	-	31	636	4.9%	7
75 and Over	-	-	-	80	1,341	6.0%	18	-	2	-	3	81	3.7%	2
Not Available	-	-	-	1,082	12,009	9.0%	1	-	-	-	-	-	-	-
TOTAL	41	171	24.0%	15,008	159,459	9.4%	49	-	72	-	650	15,888	4.1%	29
Gender														
Female	36	91	39.6%	5,368	59,960	9.0%	48	-	15	-	118	2,888	4.1%	19
Male	5	80	6.3%	8,553	87,450	9.8%	48	-	57	-	532	12,992	4.1%	28
Not Available	-	-	-	1,087	12,059	9.0%	5	-	-	-	-	8	-	-
TOTAL	41	171	24.0%	15,008	159,459	9.4%	49	-	72	-	650	15,888	4.1%	29
Race														
American Indian/Alaskan Native	-	2	-	169	1,836	9.2%	14	-	-	-	5	158	3.2%	2
Asian	-	-	-	96	1,177	8.2%	22	-	-	-	7	256	2.7%	7
Black/African American	-	2	-	4,569	40,724	11.2%	39	-	3	-	297	6,134	4.8%	18
Native Hawaiian/Pacific Islander	-	-	-	3	98	3.1%	3	-	-	-	6	56	10.7%	1
White	41	166	24.7%	8,382	95,026	8.8%	47	-	68	-	295	7,444	4.0%	26
Hispanic	-	*	*	421	4,872	8.6%	13	-	*	-	27	1,316	2.1%	6
Multi-Racial	-	-	-	90	989	9.1%	13	-	-	-	7	122	5.7%	4
Race Not Available	-	1	-	1,273	14,720	8.6%	20	-	1	-	6	402	1.5%	3
TOTAL	41	171	24.0%	15,008	159,459	9.4%	49	-	72	-	650	15,888	4.1%	29
Hispanic Origin														
Hispanic or Latino	-	2	-	1,048	10,271	10.2%	25	-	2	-	29	1,075	2.7%	8
Not Hispanic or Latino	39	125	31.2%	6,992	84,196	8.3%	34	-	46	-	365	8,248	4.4%	18
Not Available	2	44	4.5%	2,402	27,435	8.8%	22	-	24	-	99	3,468	2.9%	10
TOTAL	41	171	24.0%	15,008	159,459	9.4%	49	-	72	-	650	15,888	4.1%	29

Forensics included in "non forensic" data?

No

Note:

US totals are based on states reporting.

This table uses data from URS/DIG Table 20.

* Reported under Hispanic Origin

State Notes:

In Vermont, a single race code is used for Asian/Native Hawaiian/Pacific Islander. Typically these clients are of Asian origin.

OUTCOMES DOMAIN: TABLE 6: Readmission within 180 Days by Age, Gender and Race, FY 2007

STATE: Vermont

Age	"Civil" (Non-Forensic) Patients Readmissions: State N	"Civil" (Non-Forensic) Patients Discharges: State N	"Civil" (Non-Forensic) Patients Readmissions: State %	"Civil" (Non-Forensic) Patients Readmissions: U.S. N	"Civil" (Non-Forensic) Patients Discharges: U.S. N	"Civil" (Non-Forensic) Patients Readmissions: U.S. %	States Reporting	Forensic Patients Readmissions: State N	Forensic Patients Discharges: State N	Forensic Patients Readmissions: State %	Forensic Patients Readmissions: U.S. N	Forensic Patients Discharges: U.S. N	Forensic Patients Readmissions: U.S. %	State Reporting
0 to 12	-	-	-	508	3,212	15.8%	20	-	-	-	3	16	18.8%	1
13 to 17	-	-	-	1,741	11,511	15.1%	30	-	1	-	42	375	11.2%	7
18 to 20	-	3	-	1,595	8,275	19.3%	42	1	6	16.7%	94	804	11.7%	21
21 to 64	60	161	37.3%	24,671	119,974	20.6%	47	5	61	8.2%	1,859	13,976	13.3%	38
65 to 74	-	7	-	536	3,137	17.1%	36	-	2	-	92	636	14.5%	12
75 and Over	-	-	-	151	1,341	11.3%	24	-	2	-	9	81	11.1%	7
Not Available	-	-	-	2,539	12,009	21.1%	1	-	-	-	-	-	-	-
TOTAL	60	171	35.1%	31,741	159,459	19.9%	48	6	72	8.3%	2,099	15,888	13.2%	38

Gender	"Civil" (Non-Forensic) Patients Readmissions: State N	"Civil" (Non-Forensic) Patients Discharges: State N	"Civil" (Non-Forensic) Patients Readmissions: State %	"Civil" (Non-Forensic) Patients Readmissions: U.S. N	"Civil" (Non-Forensic) Patients Discharges: U.S. N	"Civil" (Non-Forensic) Patients Readmissions: U.S. %	States Reporting	Forensic Patients Readmissions: State N	Forensic Patients Discharges: State N	Forensic Patients Readmissions: State %	Forensic Patients Readmissions: U.S. N	Forensic Patients Discharges: U.S. N	Forensic Patients Readmissions: U.S. %	State Reporting
Female	45	91	49.5%	11,485	59,960	19.2%	47	2	15	13.3%	399	2,888	13.8%	30
Male	15	80	18.8%	17,708	87,450	20.2%	47	4	57	7.0%	1,700	12,992	13.1%	38
Not Available	-	-	-	2,548	12,059	21.1%	5	-	-	-	-	8	-	-
TOTAL	60	171	35.1%	31,741	159,459	19.9%	48	6	72	8.3%	2,099	15,888	13.2%	38

Race	"Civil" (Non-Forensic) Patients Readmissions: State N	"Civil" (Non-Forensic) Patients Discharges: State N	"Civil" (Non-Forensic) Patients Readmissions: State %	"Civil" (Non-Forensic) Patients Readmissions: U.S. N	"Civil" (Non-Forensic) Patients Discharges: U.S. N	"Civil" (Non-Forensic) Patients Readmissions: U.S. %	States Reporting	Forensic Patients Readmissions: State N	Forensic Patients Discharges: State N	Forensic Patients Readmissions: State %	Forensic Patients Readmissions: U.S. N	Forensic Patients Discharges: U.S. N	Forensic Patients Readmissions: U.S. %	State Reporting
American Indian/Alaskan Native	1	2	50.0%	362	1,836	19.7%	22	-	-	-	26	158	16.5%	10
Asian	-	-	-	224	1,177	19.0%	30	-	-	-	25	256	9.8%	10
Black/African American	-	2	-	9,252	40,724	22.7%	41	-	3	-	973	6,134	15.9%	30
Native Hawaiian/ Pacific Islander	-	-	-	10	98	10.2%	4	-	-	-	10	56	17.9%	1
White	58	166	34.9%	18,113	95,026	19.1%	46	6	68	8.8%	908	7,444	12.2%	35
Hispanic or Latino	-	*	-	638	4,872	13.1%	15	-	-	-	107	1,316	8.1%	10
Multi-Racial	-	-	-	182	989	18.4%	17	-	-	-	23	122	18.9%	6
Not Available	1	1	100.0%	2,955	14,720	20.1%	30	-	1	-	25	402	6.2%	10
TOTAL	60	171	35.1%	31,741	159,459	19.9%	48	6	72	8.3%	2,099	15,888	13.2%	38

Hispanic Origin	"Civil" (Non-Forensic) Patients Readmissions: State N	"Civil" (Non-Forensic) Patients Discharges: State N	"Civil" (Non-Forensic) Patients Readmissions: State %	"Civil" (Non-Forensic) Patients Readmissions: U.S. N	"Civil" (Non-Forensic) Patients Discharges: U.S. N	"Civil" (Non-Forensic) Patients Readmissions: U.S. %	States Reporting	Forensic Patients Readmissions: State N	Forensic Patients Discharges: State N	Forensic Patients Readmissions: State %	Forensic Patients Readmissions: U.S. N	Forensic Patients Discharges: U.S. N	Forensic Patients Readmissions: U.S. %	State Reporting
Hispanic or Latino	-	2	-	2,111	10,271	20.6%	32	-	2	-	125	1,075	11.6%	12
Not Hispanic or Latino	54	125	43.2%	16,826	84,196	20.0%	34	5	46	10.9%	1,139	8,248	13.8%	23
Not Available	6	44	13.6%	5,389	27,435	19.6%	24	1	24	4.2%	227	3,468	6.5%	14
TOTAL	60	171	35.1%	31,741	159,459	19.9%	48	6	72	8.3%	2,099	15,888	13.2%	38

Forensics included in "non forensic" data? No

Note:

US totals are based on states reporting.

This table uses data from URS/DIG Table 20.

* Reported under Hispanic Origin

State Notes:

In Vermont, a single race code is used for Asian/Native Hawaiian/Pacific Islander. Typically these clients are of Asian origin.

OUTCOMES DOMAIN: TABLE 7: Readmissions within 30 and 180 Days to any Psychiatric Inpatient Bed in the SMHA System by Age, Gender and Race, FY 2007

STATE: Vermont

Age	Readmissions within 30 days: State N	Discharges: State N	Readmissions within 30: State %	Readmissions within 30 days: U.S. N	Discharges: U.S. N	Readmissions within 30: U.S. %	States Reporting	Readmissions within 180 days: State N	Discharges: State N	Readmissions within 180: State %	Readmissions within 180 days: U.S. N	Discharges: U.S. N	Readmissions within 180: U.S. %	States Reporting
0 to 12	-	-	-	1,069	10,224	10.5%	17	-	-	-	2,457	10,224	24.0%	20
13 to 17	-	-	-	2,475	22,861	10.8%	20	-	-	-	5,387	22,861	23.6%	20
18 to 20	2	14	14.3%	1,818	13,889	13.1%	25	3	14	21.4%	3,612	13,889	26.0%	25
21 to 64	20	170	11.8%	31,279	207,587	15.1%	27	43	170	25.3%	63,748	207,587	30.7%	27
65 to 74	-	6	-	536	5,999	8.9%	22	2	6	33.3%	1,227	5,999	20.5%	22
75 and Over	-	-	-	185	3,224	5.7%	18	-	-	-	428	3,224	13.3%	18
Not Available	-	-	-	-	36	-	3	-	-	-	17	36	47.2%	3
TOTAL	22	190	11.6%	37,362	263,820	14.2%	28	48	190	25.3%	76,876	263,820	29.1%	28

Gender	Readmissions within 30 days: State N	Discharges: State N	Readmissions within 30: State %	Readmissions within 30 days: U.S. N	Discharges: U.S. N	Readmissions within 30: U.S. %	States Reporting	Readmissions within 180 days: State N	Discharges: State N	Readmissions within 180: State %	Readmissions within 180 days: U.S. N	Discharges: U.S. N	Readmissions within 180: U.S. %	States Reporting
Female	12	58	20.7%	16,492	122,632	13.4%	27	20	58	34.5%	34,473	122,632	28.1%	27
Male	10	123	8.1%	20,835	140,750	14.8%	27	28	123	22.8%	42,337	140,750	30.1%	27
Not Available	-	9	-	45	596	7.6%	7	-	9	-	87	596	14.6%	7
TOTAL	22	190	11.6%	37,362	263,820	14.2%	28	48	190	25.3%	76,876	263,820	29.1%	28

Race	Readmissions within 30 days: State N	Discharges: State N	Readmissions within 30: State %	Readmissions within 30 days: U.S. N	Discharges: U.S. N	Readmissions within 30: U.S. %	States Reporting	Readmissions within 180 days: State N	Discharges: State N	Readmissions within 180: State %	Readmissions within 180 days: U.S. N	Discharges: U.S. N	Readmissions within 180: U.S. %	States Reporting
American Indian/Alaskan Native	-	-	-	388	3,035	12.8%	18	-	-	-	756	3,035	24.9%	18
Asian	-	-	-	370	2,664	13.9%	18	-	-	-	778	2,664	29.2%	18
Black/African American	-	-	-	11,669	67,843	17.2%	21	-	-	-	23,573	67,843	34.7%	21
Native Hawaiian/ Pacific Islander	-	-	-	6	192	3.1%	9	-	-	-	33	192	17.2%	9
White	-	-	-	19,257	150,156	12.8%	24	-	-	-	40,232	150,156	26.8%	24
Hispanic or Latino	-	-	-	1,280	7,190	17.8%	7	-	-	-	2,627	7,190	36.5%	7
Multi-Racial	-	-	-	1,446	8,523	17.0%	13	-	-	-	2,994	8,523	35.1%	13
Not Available	22	190	11.6%	2,793	23,214	12.0%	19	48	190	25.3%	5,564	23,214	24.0%	19
TOTAL	22	190	11.6%	37,362	263,820	14.2%	28	48	190	25.3%	76,876	263,820	29.1%	28

Hispanic Origin	Readmissions within 30 days: State N	Discharges: State N	Readmissions within 30: State %	Readmissions within 30 days: U.S. N	Discharges: U.S. N	Readmissions within 30: U.S. %	States Reporting	Readmissions within 180 days: State N	Discharges: State N	Readmissions within 180: State %	Readmissions within 180 days: U.S. N	Discharges: U.S. N	Readmissions within 180: U.S. %	States Reporting
Hispanic or Latino	-	-	-	714	7,480	9.5%	17	-	-	-	1,533	7,480	20.5%	17
Not Hispanic or Latino	-	-	-	10,241	106,073	9.7%	20	-	-	-	22,299	106,073	21.0%	20
Not Available	22	190	11.6%	11,699	73,390	15.9%	15	48	190	25.3%	22,513	73,390	30.7%	15
TOTAL	22	190	11.6%	37,362	263,820	14.2%	28	48	190	25.3%	76,876	263,820	29.1%	28

State Hospitals included in Table?

Yes

Forensics included in Table?

No

Note:

US totals are based on states reporting.

This table uses data from URS/DIG Table 21.

State Notes:

Based on analysis of VT State Hospital Episode Database and VT general hospital admission data using PPE.

2007 CMHS Uniform Reporting System Output Table

STRUCTURE DOMAIN: TABLE 1: State Mental Health Agency Controlled Expenditures for Mental Health, FY 2005

STATE: Vermont

	Expenditures: State	Percent of Total Expenditures: State	Expenditures: U.S.	Percent of Total Expenditures: U.S.
State Hospitals-Inpatient	\$15,300,000	14%	\$8,077,088,973	27%
Other 24-Hour Care	\$21,000,000	19%	\$5,436,852,037	18%
Ambulatory/Community	\$69,600,000	64%	\$15,236,260,291	52%
TOTAL	\$109,000,000	-	\$29,397,421,631	-

Note:

Total also includes additional SMHA Expenditures for research, training, administration, and other central and regional office expenditures.

Data from NRI's Funding Sources and Expenditures of State Mental Health Agencies, FY 2005 report, Table 18 "SMHA-Controlled Expenditures for Mental Health Services."

U.S. Totals are based on 51 states reporting.

More information on the State Mental Health Agency's Revenues & Expenditures as well as State Footnotes can be found on the NRI website:

<http://www.nri-inc.org/projects/Profiles/RevenuesExpenditures.cfm>

STRUCTURE DOMAIN: TABLE 2: State Mental Health Agency Controlled Revenues by Funding Source, FY 2005**STATE: Vermont**

	State Hospital: State Revenues	State Hospital: Percent Total: State	State Hospital: Percent Total: U.S.	Ambulatory/Com munity: State Revenues	Ambulatory/Com munity % Total: State	Ambulatory/Com munity % Total: U.S.
Medicaid	\$100,000	0.7%	25.9%	\$83,400,000	92.1%	50.3%
Community MH Block Grant	-	-	-	\$800,000	0.9%	1.9%
Other SAMHSA	-	-	0.0%	\$300,000	0.3%	0.3%
Other Federal (non-SAMHSA)	\$400,000	2.6%	3.6%	\$1,800,000	2.0%	3.1%
State	\$14,600,000	95.4%	66.4%	\$4,300,000	4.7%	37.5%
Other	\$200,000	1.3%	4.2%	-	-	6.8%
TOTAL	\$15,300,000	100%	100%	\$90,600,000	100%	100%

Note:

Data from NRI's Funding Sources and Expenditures of State Mental Health Agencies, FY 2005 report.

State Mental Health Agency Controlled Expenditures and Revenues, Tables 24, 25, and 26.

This Table does not show Revenues for state central office including Research, Training, and Administration expenses.

More information on the State Mental Health Agency's Revenues & Expenditures as well as State Footnotes can be found on the NRI website:

<http://www.nri-inc.org/projects/Profiles/RevenuesExpenditures.cfm>

STRUCTURE DOMAIN: TABLE 3:Federal Mental Health Block Grant Expenditures for Non-Direct Service Activities, FY 2007

STATE : Vermont

	State Non Direct Block Grant Expenditures	Percent Total: State	Percent Total: U.S.
Technical Assistance Activities	\$15,816	32.0%	34.3%
Planning Council			2.9%
Administration			20.5%
Data Collection/Reporting			8.0%
Other Activities	\$33,605	68.0%	34.3%
Total	\$49,421	100.0%	100.0%

Note:

This table uses data from URS/DIG Table 8.

State Notes:

MHA Technical Assistance Activities includes CRT Housing Infrastructure Funding; MHA Activities Other Than Those Above includes Peer Operated Initiatives and Vermont Psychiatric Survivors

2007 CMHS Uniform Reporting System Output Table

STRUCTURE DOMAIN: TABLE 4: Mental Health Programs Funded by the Federal Mental Health Block Grant, FY 2007

STATE: Vermont

Programs = 14

\$772,537

Agency Name	Address	Agency Director	Phone Number	Mental Health Block Grant
occurring mental health and substance abuse diagnoses				\$181,564
Housing Infrastructure				\$13,000
Washington County Mental Health Services	PO Box 647, Montpelier, VT 05601-0647	Paul Dupre	802.229.0591	\$36,331
Vermont Psychiatric Survivors	1 Scale Avenue, Ste. 52, Rutland, VT 05701	Linda Corey	802.775.6823	\$48,013
United Counseling Service	Ledge Hill Drive, Bennington, VT 05201	Ralph Provenza	802.442.5491	\$33,240
Rutland Mental Health Services	78 South Main Street, Rutland, VT 05701	Tom Pour, Acting Interim CEO	802.775.8224	\$36,662
Northwestern Counseling & Support Services, Inc.	107 Fisher Pond Road, St. Albans, VT 05478-6286	Ted Mable	802.524.6554	\$30,911
Northeast Kingdom Human Services, Inc.	154 Duchess Avenue, Newport, VT 05855	Eric Grims	802.334.6744	\$62,386
Northeastern Family Institute	30 Airport Road, S. Burlington, VT 05403	Chuck Myers	802.658.0040	\$91,043
Lamoille County Mental Health Services	275 Brooklyn Street, Morriville, VT 05662	William Alexander	802.888.5062	\$33,167
Howard Center for Human Services	300 Flynn Avenue, Burlington VT 05401	Todd Centybear	802.865.6117	\$64,791
Health Care & Rehabilitation Services of Southeastern Vermont	390 River Street, Springfield, VT 05156	Judith Hayward	802.463.3947	\$88,587
Counseling Center of Addison County	89 Main Street, Middlebury, VT 05753	Robert Thorn	802.388.6751	\$28,702
Clara Martin Center	11 North Main Street, PO Box G, Randolph, VT 05060	Linda Chambers	802.728.4466	\$24,140

2007 CMHS Uniform Reporting System Output Table**General Notes: VT, FY2007**

Table Number	General Notes
18	In Vermont, a single race code is used for Asian/Native Hawaiian/Pacific Islander. Typically these clients are of Asian origin. Statewide unduplicated counts are based on Probabilistic Population Estimation. Summing statistical estimates rounded to whole numbers results in small discrepancies.